

Circular Cassette (48000 BTU) Indoor Unit For Heat-recovery/Heat-pump Airstage VRF System

Job Name _____
 Location _____
 Engineer _____
 Submitted To _____
 Submitted By _____
 Reference _____

Date _____
 Approval _____
 Construction _____
 Unit No _____
 Drawing No _____

FEATURES

- Quiet 3 speed fan
- Built-in high-lift drain pump
- Optional IR Receiver
- Support for fresh-air intake kit
- Grille includes built-in modulating louvers
- Grille must be ordered separately (UTG-LCGVCW)
- Auxiliary heat operation capability
- 10 year Extended Warranty on parts and compressor. See Warranty Statement.



PIPING ACCESSORIES

| | |
|------------|--|
| UTP-AX090A | Separation Tube - 2-Pipe - 90 MBH or Less |
| UTP-AX180A | Separation Tube - 2-Pipe - 91 to 180 MBH |
| UTP-AX567A | Separation Tube - 2-Pipe - 180 MBH or More |

CONTROLLER

| | |
|------------|--|
| UTY-RNRUZ2 | Individual Touch Panel Controller (Wired Remote) |
| UTY-RSRY | Simple Remote (WITH Master Control) 2-Wire |
| UTY-RHRY | Simple Remote (WITHOUT Master Control) 2-Wire |
| UTY-DCGY | Central Remote Controller (100 units) |
| UTY-DTGYZ1 | Touch Panel Controller with Internet (400 units) |
| UTY-APGX | System Controller (1600 units) |
| UTY-LBHXD | IR Receiver Kit |

ACCESSORIES

| | |
|------------|------------------------------|
| UTR-YDZK | Air outlet Shutter plate |
| UTZ-KXRA | Insulation for high humidity |
| UTY-SHZXC | Human sensor kit |
| UTG-AKXA-W | Wide Panel |
| UTG-BKXA-W | Panel Spacer |

WEIGHT AND DIMENSIONS

| | |
|---|--|
| Enclosure - Net Weight - lbs [kg] | 65 [29.5] |
| Enclosure - Gross Weight - lbs [kg] | 75 [34] |
| Dimensions - Net (H x W x D) - in [mm] | 11-5/16 x 33-1/16 x 33-1/16 [288 x 840 x 840] |
| Dimensions - Gross (H x W x D) - in [mm] | 13-3/8 x 37-13/16 x 37-3/8 [340 x 960 x 950] |
| Grille Weight Net - lbs [kg] | 13.0 [6.0] |
| Grille Weight Gross - lbs [kg] | 0 |
| Grille Dimensions Net (H x W x D) - in [mm] | 2-1/16 x 37-3/8 x 37-3/8 [53 x 950 x 950] |
| Grille Dimensions Gross (H x W x D) - in [mm] | 0 |

CAPACITY

| | |
|---------------------------------|---------------|
| Capacity - Cooling - Btu/h [kW] | 48,000 [14.1] |
| Capacity - Heating - Btu/h [kW] | 54,000 [15.8] |

ELECTRICAL

| | |
|------------------------------------|---------------------------|
| Power Source | 208 / 230V, 1-Phase, 60Hz |
| Available Voltage Range - VAC | 187 to 253 |
| Input Power - W | 116 |
| Full Load Amps - FLA - A | 1.12 |
| Max Circuit Breaker - A | 15 |
| Minimum Circuit Ampacity - MCA - A | 1.4 |

FAN

| | |
|---|------------------------------|
| Fan Type | Turbo |
| Airflow Rate - High Medium High - CFM [m³/h] | 1202 [2,040] 1,060 [1,800] |
| Airflow Rate - Medium Medium Low - CFM [m³/h] | 937 [1,590] 848 [1,440] |
| Airflow Rate - Low Quiet - CFM [m³/h] | 766 [1,300] 677 [1,150] |

SOUND PRESSURE

| | |
|------------------------------|-------------------|
| Sound Pressure Level - dB(A) | 47/45/42/39/36/33 |
|------------------------------|-------------------|

WIRING

| | |
|---------------------|--|
| Communication Cable | LonWorks (Fujitsu Pink Cable. See AE Bulletin 009) |
|---------------------|--|

PIPING

| | |
|---|---------------|
| Connection Pipe Diameter - Liquid (Brazing) - in [mm] | ø 3/8 [9.52] |
| Connection Pipe Diameter - Gas (Brazing) - in [mm] | ø 5/8 [15.88] |
| Connection Pipe Diameter - Drain (ID; OD) - in [mm] | ø 3/4 [19] |
| Drain-Pump | Built-in |
| Drain-Pump Lift - in [mm] | 27 9/16 [700] |

ETL

| | |
|--------|---------|
| E.T.L. | 3170288 |
|--------|---------|

TEMPERATURE RANGES

| | |
|--|---------------------|
| Operating Temp. Cooling (DB) - °F [°C] | 64 to 88 [18 to 31] |
| Operating Temp. Heating (DB) - °F [°C] | 50 to 88 [10 to 31] |

Note: Specifications are based on the following conditions:
 Cooling: Indoor temperature of 80°F (26.7°C) DB/67°F (19.4°C) WB, and outdoor temperature of 95°F (35°C) DB/75°F (23.9°C) WB. Heating: Indoor temperature of 70°F (21.1°C) DB/60°F (15.6°C) WB, and outdoor temperature of 47°F (8.3°C) DB/43°F (6.1°C) WB. Pipe length: 25ft. (7.5m), Height difference: 0ft. (0m) (Outdoor unit - indoor unit).

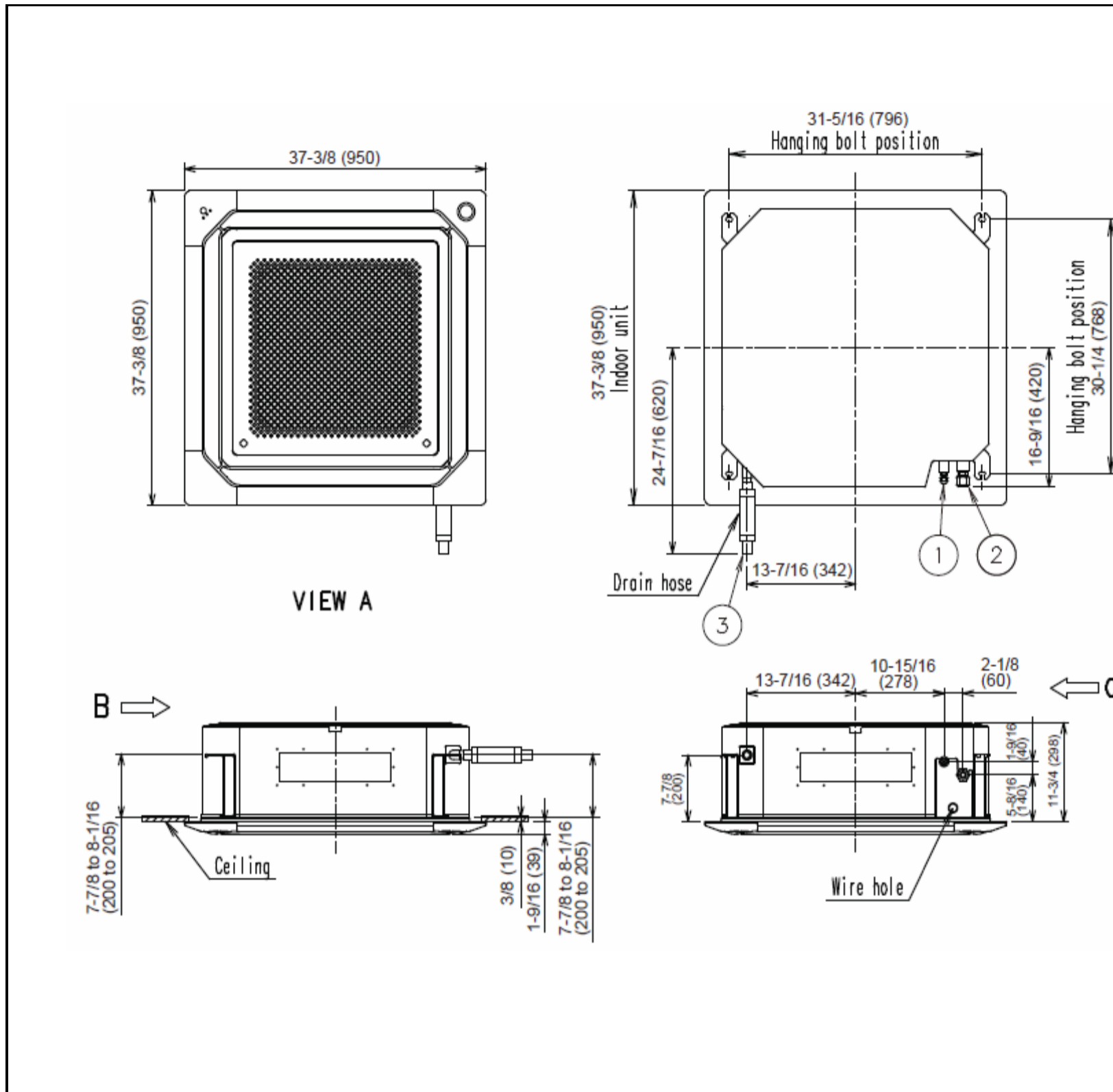


Fujitsu General America, Inc.
 353 Route 46 West
 Fairfield, NJ 07004
 Toll Free: (888) 888-3424
 Fax: (973) 836-0453
 www.airstagevrf.com

Circular Cassette (48000 BTU) Indoor Unit
For Heat-recovery/Heat-pump Airstage VRF System

DIMENSIONS

Unit: In. (mm)



Fujitsu General America, Inc.
353 Route 46 West
Fairfield, NJ 07004
Toll Free: (888) 888-3424
Fax: (973) 836-0453
www.airstagevrf.com