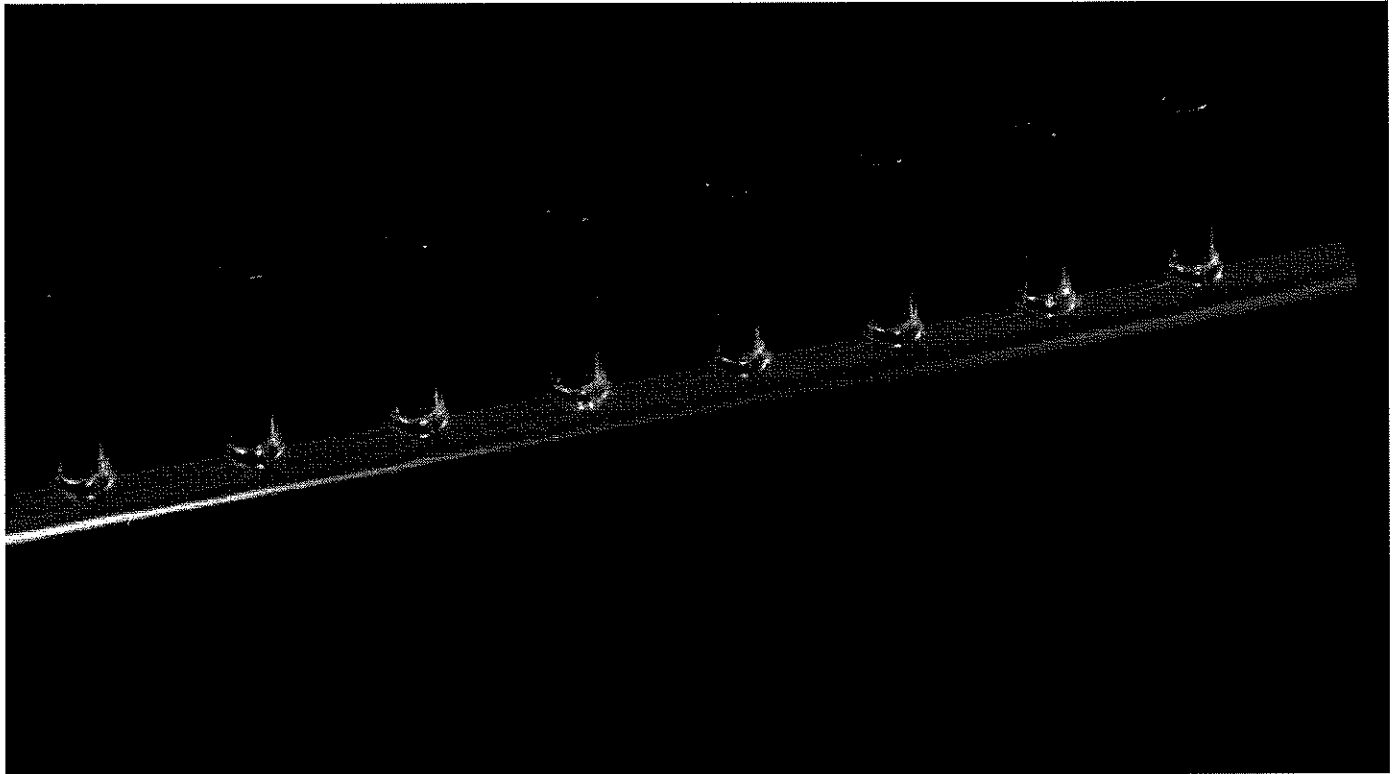


- 1 Home**
- 2 Products & Services**
- 3 Where to buy our product**
- 4 About Alberta Custom Tee**
- 5 The Alberta Custom Tee Advantage**

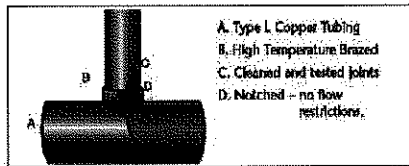


Cut-to-size 72" Headers



10037 96 Ave Westlock,
Alberta, Canada, T7P 2P9

Phone: 1 780 349-6511
Fax: 1 780 349-4232
Email info@customtee.com

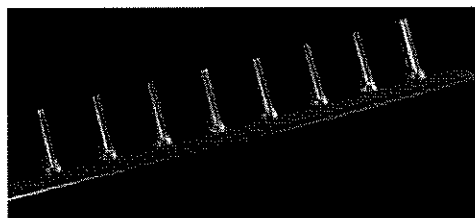


Please note: This product is not recommended to be used with press on type fittings. We can make this product with extended outlets for this type of fitting. Please ask your wholesaler to contact us for a quote.

Business Hours:

Monday to Friday

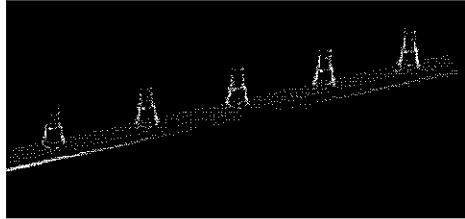
7:00am to 4:00pm
Mountain Standard Time



Copper Outlets, 1", 1 1/4", 1 1/2" or 2" Pipe Run with 24 1/2" or 3/4" copper outlets on 3" centers

Copper Manifolds, Headers & Tees

| Stock Number | Pipe Run | Outlet Size | Unit/Box |
|--------------|----------|-------------|----------|
| CC1005024 | 1" | 1/2" | 5 |
| CC1255024 | 1 1/4" | 1/2" | 4 |
| CC1505024 | 1 1/2" | 1/2" | 3 |
| CC2005024 | 2" | 1/2" | 2 |
| CC1007524 | 1" | 3/4" | 4 |
| CC1257524 | 1 1/4" | 3/4" | 4 |
| CC1507524 | 1 1/2" | 3/4" | 3 |
| CC2007524 | 2" | 3/4" | 2 |
| CC1251024 | 1 1/4" | 1" | 4 |
| CC1501024 | 1 1/2" | 1" | 3 |
| CC2001024 | 2" | 1" | 2 |



24 Pex Outlets, 1", 1 1/4", 1 1/2" or 2" Pipe Run with 24 1/2" Crimpex Lead Free outlets on 3" centers. The last two products listed have **1/2" or 3/4" (optional) pex valves.**

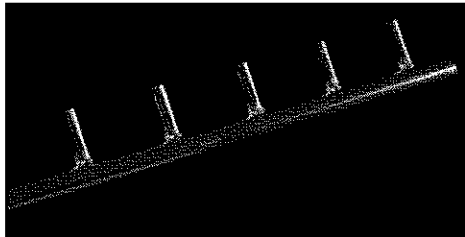
| Stock Number | Pipe Run | Outlet Size | Unit/Box |
|--------------|----------|-------------|----------|
| CX1005024 | 1" | 1/2" PEX | 6 |
| CX1255024 | 1 1/4" | 1/2" PEX | 4 |
| CX1505024 | 1 1/2" | 1/2" PEX | 3 |
| CX2005024 | 2" | 1/2" PEX | 2 |

Variations available to the above at an additional charge.
3/4" Crimpex

| | | | |
|------------|--------|------------|---|
| CX1005024V | 1" | 1/2" PEX V | 2 |
| CX1255024V | 1 1/4" | 1/2" PEX V | 2 |
| CX1505024V | 1 1/2" | 1/2" PEX V | 2 |
| CX2005024V | 2" | 1/2" PEX V | 2 |

Variations available to the above at an additional charge.
3/4" Crimpex valves

Please note: This product is not recommended to be used with press on type fittings. We can make this product with extended outlets for this type of fitting. Please ask your wholesaler to contact us for a quote.

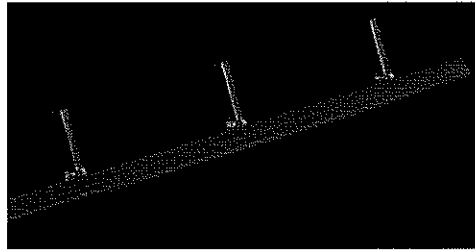


18 Copper Outlets, 1", 1 1/4", 1 1/2" or 2" Pipe Run with 18 1/2", or 3/4" copper outlets on 4" centers. Also available in 1 1/4", 1 1/2" or 2" with 18 1" copper outlets.

| Stock Number | Pipe Run | Outlet Size | Unit/Box |
|--------------|----------|-------------|----------|
| CC1005018 | 1" | 1/2" | 5 |
| CC1255018 | 1 1/4" | 1/2" | 4 |
| CC1505018 | 1 1/2" | 1/2" | 3 |
| CC2005018 | 2" | 1/2" | 2 |
| CC1007518 | 1" | 3/4" | 4 |
| CC1257518 | 1 1/4" | 3/4" | 4 |
| CC1507518 | 1 1/2" | 3/4" | 3 |
| CC2007518 | 2" | 3/4" | 2 |
| CC1251018 | 1 1/4" | 1" | 3 |

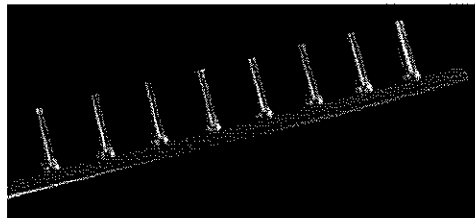
Copper Manifolds, Headers & Tees

| | | | |
|-----------|--------|----|---|
| CC1501018 | 1 1/2" | 1" | 3 |
| CC2001018 | 2" | 1" | 2 |



12 Copper Outlets, 1", 1 1/4", 1 1/2" or 2" Pipe Run with 12 1/2", or 3/4" copper outlets on 6" centers. Also available in 1 1/4", 1 1/2" or 2" pipe run with 12 - 1" copper outlets.

| Stock Number | Pipe Run | Outlet Size | Unit/Box |
|--------------|----------|-------------|----------|
| CC1005012ER | 1" | 1/2" | 5 |
| CC1255012ER | 1 1/4" | 1/2" | 4 |
| CC1505012ER | 1 1/2" | 1/2" | 3 |
| CC2005012ER | 2" | 1/2" | 2 |
| CC1007512ER | 1" | 3/4" | 4 |
| CC1257512ER | 1 1/4" | 3/4" | 4 |
| CC1507512ER | 1 1/2" | 3/4" | 3 |
| CC2007512ER | 2" | 3/4" | 2 |
| CC1251012ER | 1 1/4" | 1" | 3 |
| CC1501012ER | 1 1/2" | 1" | 3 |
| CC2001012ER | 2" | 1" | 2 |



30 Copper Outlets, Cut to Size 62" Pipe run 1" with 30 1/2" copper outlets on 2" centers
*Please Note: There will be outlet wastage when cutting 2" center product to **meet plumbing codes.***

| Stock Number | Pipe Run | Outlet Size | Unit/Box |
|--------------|----------|-------------|----------|
| CC1005030 | 1" | 1/2" | 5 |