



# FLG1000



## **THE BOSTON VALVE Co.**

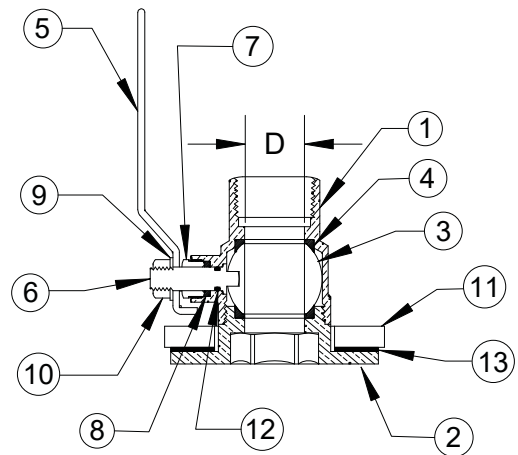
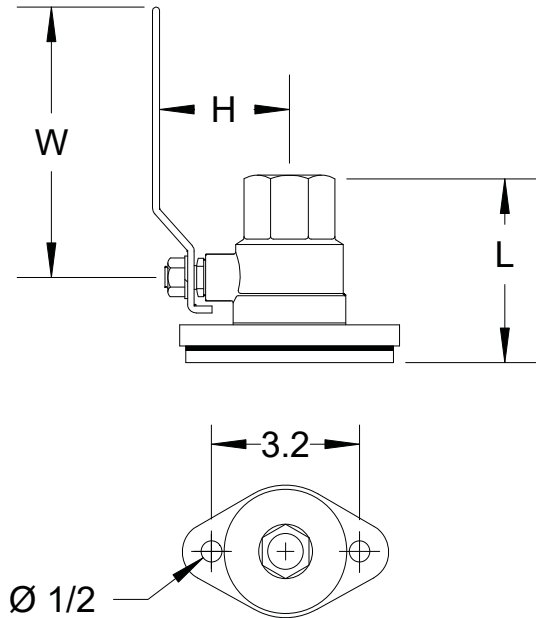
---

A DIVISION OF BOSTON METAL PRODUCTS, LTD.  
25 THURBER BLVD., UNIT #3  
SMITHFIELD, RI 02917

TOLL FREE: 1-800-839-0013, TEL: 401-231-8537  
FAX: 401-231-8491  
[WWW.BOSTONVALVE.COM](http://WWW.BOSTONVALVE.COM)

# FLG1000 SERIES FLANGED CIRCULATOR VALVE

A flanged by NPT, quarter turn, brass ball valve. Used for circulator pump isolation.



## DIMENSIONS

CAT. NO.	SIZE	L	D	H	W
FLG0751000	3/4	2.19	.75	2.34	4.65
FLG1001000	1	2.62	1	2.52	4.65
FLG1251000	1 1/4	2.98	1.25	2.53	5.80

## MATERIALS

NO	PART NAME	MATERIAL
13	WASHER	BUNA-N
12	O-RING	BUNA-N
11	FLANGE	STEEL, ZINC PLATED
10	NUT	STEEL, ZINC PLATED
9	LOCK WASHER	STEEL, ZINC PLATED
8	STEM PACKING	PTFE
7	GLAND NUT	BRASS
6	STEM	BRASS
5	HANDLE	STEEL, ZINC PLATED ,PLASTICOATED
4	SEAT	PTFE
3	BALL	BRASS, HARD CHROME PLTD.
2	END CAP	BRASS
1	BODY	BRASS