



Submittal Data Information

101-029

Model 007 Cartridge Circulator

Effective: June 10, 2015

Supersedes: March 25, 2013

Job: _____ Engineer: _____ Contractor: _____ Rep: _____

ITEM NO.	MODEL NO.	IMP. DIA.	G.P.M.	HEAD/FT.	H.P.	ELEC. CHAR.

Features

- Standard High Capacity Output-Compact Design
- Quiet, Efficient Operation
- Direct Drive-Low Power Consumption
- Unique Replaceable Cartridge Design-Field Serviceable
- Self Lubricating
- No Mechanical Seal
- Unmatched Reliability-Maintenance Free
- Universal Flange to Flange Dimensions
- Cast Iron or Stainless Steel Construction

Materials of Construction

Casing (Volute):..... Cast Iron or Stainless Steel
 Stator Housing:..... Steel
 Cartridge:..... Stainless Steel
 Impeller: Non-Metallic
 Shaft:..... Ceramic
 Bearings:..... Carbon
 O-Ring & Gaskets:..... EPDM

Model Nomenclature

F - Cast Iron, Flanged
 SF - Stainless Steel, Flanged

Performance Data

Max. Flow: 23 GPM
 Max. Head: 10 Feet
 Min. Fluid Temperature: 40°F (4°C)
 Max. Fluid Temperature: 230°F (110°C)
 Max. Working Pressure: 125 psi
 Connection Sizes: 3/4", 1", 1-1/4", 1-1/2" Flanged

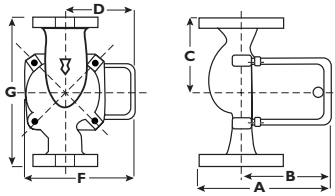
Certifications & Listings

Application

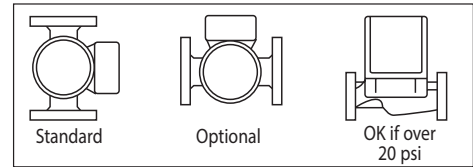
The Taco 007 is a cartridge style, maintenance free, wet-rotor, in-line, single stage circulator pump. It is designed for quiet operation in Hydronic heating, Radiant heating, Hydro-Air fan coils, Indirect water heaters, Chilled fresh water, and Domestic Water Recirculation systems. Available in Cast Iron or Stainless Steel construction with universal flanged connections. The unique replaceable cartridge contains all of the moving parts and allows the circulator to be easily serviced instead of replacing the entire unit. Ideal for a wide range of applications.

Pump Dimensions & Weights

Models	Casing	Flange Type*	A		B		C		D		F		G		Ship Wt.	
			in.	mm	in.	mm	in.	mm	in.	mm	in.	mm	in.	mm	lbs.	Kg
007-F5	Cast Iron	S	6-3/8	162	4-1/2	114	3-3/16	81	3-15/16	75	4-3/4	121	6-3/8	162	8.0	3.6
007-F5-5	Cast Iron	R	6-1/2	156	4-1/2	114	3-3/16	81	3-15/16	75	4-3/4	121	6-3/8	162	8.0	3.6
007-SF5	St. Steel	S	6-3/8	162	4-1/2	114	3-3/16	81	3-15/16	75	4-3/4	121	6-3/8	162	7.0	3.2



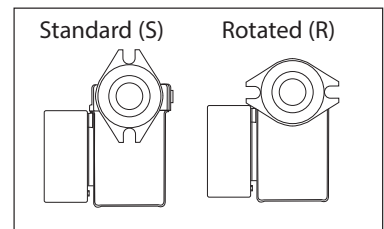
Mounting Positions



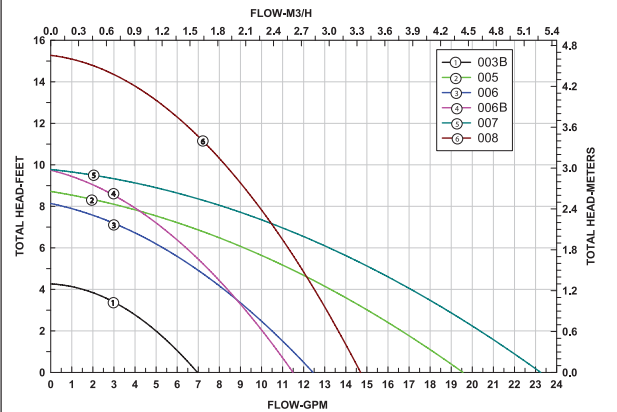
Electrical Data

Model	Volts	Hz	Ph	Amps	RPM	HP
Cast Iron	115	60	1	.74	3250	1/25
St. Steel	115	60	1	.76	3250	1/25
Motor Type	Permanent Split Capacitor Impedance Protected					
Motor Options	220/50/1, 220/60/1, 230/60/1, 100/110/50/60/1					

*Flange Orientation Type



Performance Field - 60Hz TACO 007 CIRCULATORS



Taco, Inc., 1160 Cranston Street, Cranston, RI 02920 | Tel: (401) 942-8000 | FAX: (401) 942-2360

Taco (Canada), Ltd., 8450 Lawson Road, Suite #3, Milton, Ontario L9T 0J8 | Tel: (905) 564-9422 | FAX: (905) 564-9436

Visit our web site: www.TacoComfort.com | Printed in USA | ©2015 Taco, Inc.

