

Smoke Emitters

- These unique smoke emitters emit a dense, oil-free, non-toxic smoke
- Use to test and balance air flows
- Smoke cartridges are non-explosive
- Packaged in sealed capsules
- Easily locates leaks in furnaces & ductwork



ITEM NO.	DESCRIPTION	STD QTY	U M
0116	150 Cu Ft Smoke / 45 Sec Burn	100	EA
0117	600 Cu Ft Smoke / 75 Sec Burn	100	EA
0118	1060 Cu Ft Smoke / 2-1/2 Min Burn	5	EA
0119	2500 Cu Ft Smoke / 4 Min Burn	5	EA

Superior Signal Smoke Emitters

- Emits a dense smoke for easy viewing
- Easily locates leaks in furnaces & ductwork
- Contains no explosive materials
- Use to test and balance air flows



ITEM NO.	DESCRIPTION	STD QTY	U M
15055	[1A] 4000 Cu Ft Smoke / 30 Sec	12	EA
15056	[2B] 8000 Cu Ft Smoke / 1 Min	12	EA
17707	[3C] 40,000 Cu Ft Smoke / 3 Min	12	EA

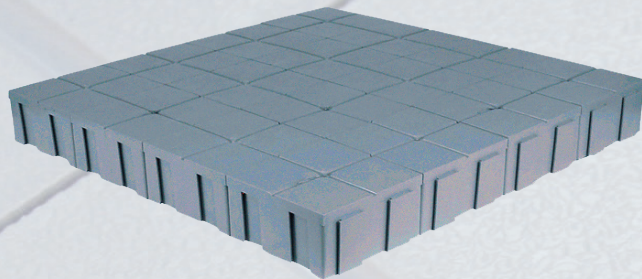
Smoke Pen

- Patented smoke-emitting wick
- Provides a continuous trail of smoke
- Non-toxic, cool burning smoke emitter
- Ideal for air balancing, verifying ventilation, testing smoke alarms, tests for negative or positive pressure, etc.
- Easily extinguished by replacing the protective cover
- Each wicks provide approximately 30 minutes of continuous smoke



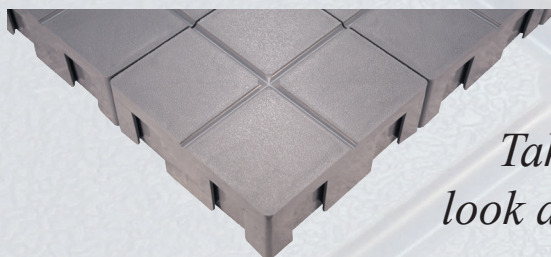
ITEM NO.	DESCRIPTION	STD QTY	U M
19629	Smoke Pen with 6 Wicks	1	EA
19630	6 Wick Refills for Smoke Pen	1	EA

Bramec® Air-Pad® Condenser Bases



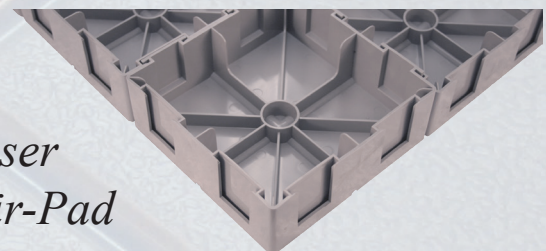
Patented design
Modular inter-locking design
Pad sizes easily customized
Easy, safe, fast installation
Light-weight, sturdy construction
Self-draining
2" and 3" inch heights
Gray in color

Available in 2" and 3"



Top View

Take a closer look at the Air-Pad



Bottom View

See Page 4 For Sizes Available!