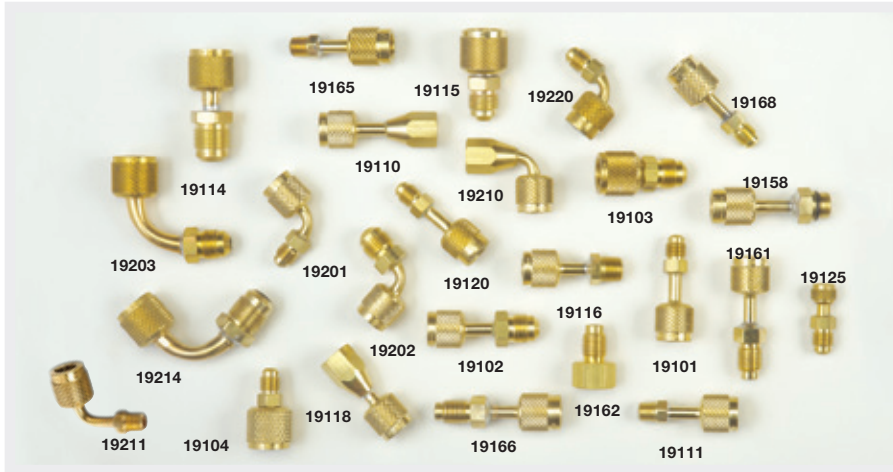


# QUICK COUPLERS Expanded line



- Full size with deep knurling for easy handling
- CH14 “Adjust-a-Valve” opener in all 1/4" Female ends
- Acme conversion couplers are available for recovery tank threads and R-134A cylinder threads
- 5/16" Conversion couplers available
- Made in the USA

UPC#	Description
<b>Straight quick couplers</b>	
19125	1/8" Female QC x 1/4" Male flare (Ford)
19120	3/16" Female QC x 1/4" Male flare (GM)
19101	1/4" Female QC x 1/4" Male flare
19102	1/4" Female QC x 3/8" Male flare
19111	1/4" Female QC Str. x 1/8" NPT Male
19116	1/4" Female QC Str. x 1/4" NPT Male
19103	3/8" Female QC x 3/8" Male flare
19104	3/8" Female QC x 1/4" Male flare
19115	1/2" Female QC x 3/8" Male flare
19114	3/8" Female QC x 1/2" Male flare
19020	Gaskets (10 pk)

UPC#	Description
<b>90° Quick couplers</b>	
19220	3/16" Female QC 90° x 1/4" Male flare
19201	1/4" Female QC 90° x 1/4" Male flare
19202	1/4" Female QC 90° x 3/8" Male flare
19203	3/8" Female QC 90° x 3/8" Male flare
19214	3/8" Female QC 90° x 1/2" Male flare

19110	1/4" Female QC x 1/8" NPT Fe.
19118	1/4" Female QC Str. x 1/4" NPT Fe.
19210	1/4" Female QC 90° x 1/8" NPT Fe.
19218*	1/4" Female QC 90° x 1/4" NPT Fe.

UPC#	Description
<b>5/16" Quick couplers with CH14 adjustable valve opener</b>	
19121*	5/16" QC Str. x 1/4" Male flare
19221*	5/16" QC 90° x 1/4" Male flare
19122*	1/4" QC Str. x 5/16" Male flare
19222*	1/4" QC 90° x 5/16" Male flare

19161	1/4" Female QC x 1/2" Acme Male
19162	1/4" Female hex x 1/2" Acme Male for permanent applications
19166	1/2" Acme Male x 1/2" Acme Female
19165	1/2" Acme Female x 1/4" Male flare
19168	1/2" Acme Female x 1/8" NPT Male
19158	1/2" Acme Female x 14 mm Male
19164	Quick Coupler ACME X 1/4 MPT

UPC#	Description
<b>ACME 1/2" couplers – auto straight</b>	

## QUICK COUPLERS Schrader core in male end



- All couplers have Schrader valve cores in Male flare end
- Female coupler end has deep knurling for easy handling
- Patented CH14 “Adjust-a-Valve” opener in all 1/4" Female ends
- Made in the USA

UPC#	Description
<b>Straight quick couplers</b>	
19171	1/4" Female QC x 1/4" Male flare
19172	3/8" Female QC x 1/4" Male flare

<b>90° Bend quick couplers</b>	
19191	1/4" Female QC x 1/4" Male flare
19192	3/8" Female QC x 1/4" Male flare

<b>45° R-410A couplers</b>	
19173	5/16" Female QC x 1/4" Male flare
19174	1/4" Female QC x 5/16" Male flare
19175	5/16" Female QC x 5/16" Male flare

# SEALRIGHT™ QUICK COUPLERS

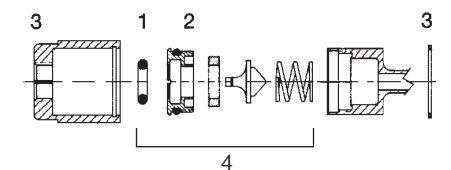


SealRight™ fittings automatically and immediately trap refrigerant in the hose when disconnected, helping meet non-venting regulations and preventing finger burns. One-piece attaches quickly, saving up to 50 percent in time compared to 2-piece quick couplers.

- Works with or without Schrader core
- Gaskets resist deterioration from SealRight repair assembly components
- CFC, HCFC, HFC refrigerants and refrigerant oils. Field serviceable
- Made in the USA

UPC#	Description
19109	1/4" SealRight™ Str. x 1/4" Male flare
19208	1/4" SealRight™ 45° x 1/4" Male flare
19209	1/4" SealRight™ 90° x 1/4" Male flare
19100	Set of 19109 and 19209
19117	1/4" SealRight™ Str. x 3/8" Male flare
19217	1/4" SealRight™ 90° x 3/8" Male flare
19128	1/4" SealRight™ Str. x 1/8" NPT Female
19129	1/4" SealRight™ Str. x 1/4" NPT Female
19169	Acme 1/2" SealRight™ x 1/2" Acme
19163	Acme 1/2" SealRight™ x 1/4" Male flare

<b>SealRight repair assembly components</b>	
19037	“O” rings (10 pak) (1)
19038	Plug assembly with all seals (2)
19039	Nut and clip (3)
19040	Rebuild kit (4)
19041	Overhaul kit with all above parts
19045	Gasket set



UPC#	Description
<b>SealRight repair assembly components</b>	

19037	“O” rings (10 pak) (1)
19038	Plug assembly with all seals (2)
19039	Nut and clip (3)
19040	Rebuild kit (4)
19041	Overhaul kit with all above parts
19045	Gasket set