



A CSW Industrials Company

# TRUaire 2004CD Series

## 3 Cone Step Down T-Bar Lay-In Diffuser

Model: \_\_\_\_\_ Size: \_\_\_\_\_

**Project Information:**

Job Name: \_\_\_\_\_

Location: \_\_\_\_\_

Engineer: \_\_\_\_\_

Submitted to: \_\_\_\_\_

For:            Reference            Approval            Construction

Submitted by: \_\_\_\_\_

Reference: \_\_\_\_\_

**Submittal Information:**

Approval: \_\_\_\_\_

Date: \_\_\_\_\_

Construction: \_\_\_\_\_

Unit #: \_\_\_\_\_

Drawing #: \_\_\_\_\_

**Construction Options**

Steel

Aluminum

R6 Molded Insulated Back

Butterfly Damper

Radial Damper

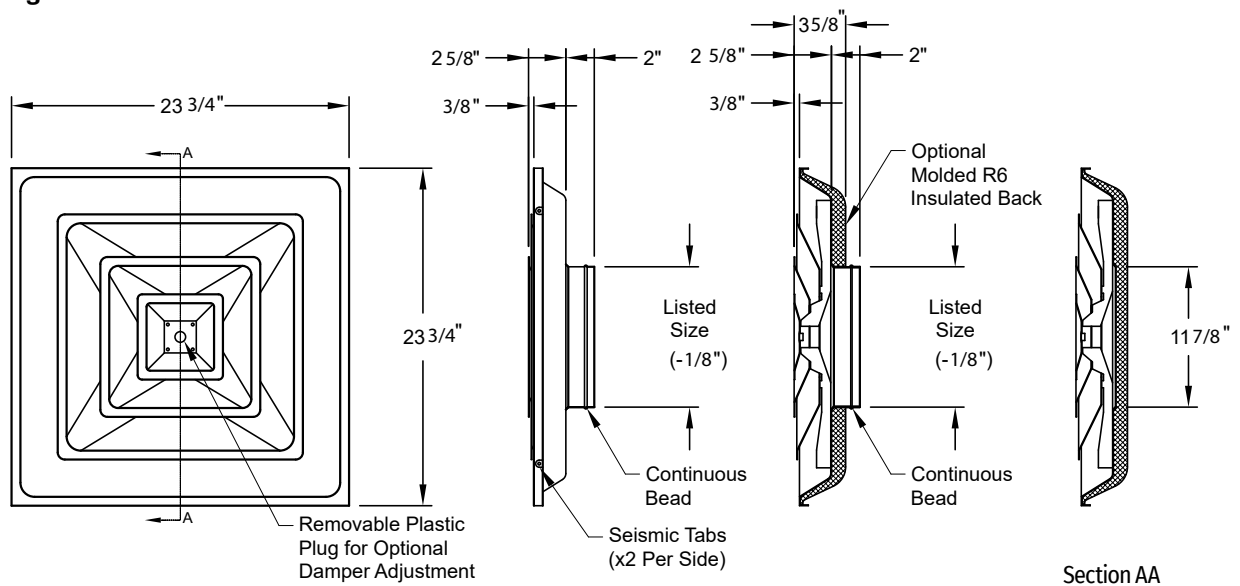
**Available Round Neck Diameters (IN):**

6, 8, 10, 12 and 14

**(Sec. I) Features**

- Pristine White Powder Coat Finish

**(Fig. I) Product Image:**



**RectorSeal® • 2601 Spenwick Drive • Houston, TX 77055 • 800-231-3345 • [rectorseal.com](http://rectorseal.com)**

A CSW Industrials Company. RectorSeal, the logos and other trademarks are property of RectorSeal, LLC, its affiliates or its licensors and are protected by copyright, trademark and other intellectual property laws, and may not be used without permission. RectorSeal reserves the right to change specifications without prior notice. ©2023 RectorSeal. All rights reserved. R50956-0323