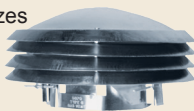


L.L. Building Versa Caps®

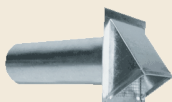
- Clamp fitting that's adjustable for all standard sizes
- For chimney, flue, or hot stack installation
- Non-clogging, positive draft design
- Aluminum Construction
- UL listed



ITEM NO.	DESCRIPTION	STD QTY	U M
19292	[3050] 2-7/8" – 5" Adjustable Versa Cap	12	EA
19293	[5070] 4-7/8" – 7" Adjustable Versa Cap	12	EA
19294	[7090] 6-7/8" – 9" Adjustable Versa Cap	12	EA
19295	[9011] 8-7/8" – 11" Adjustable Versa Cap	6	EA
19296	[1200] 11-7/8" – 14-1/2" Adj Versa Cap	2	EA

Fresh Air Vents

- Vent a combustion system or as a fresh air intake
- Built-in bird screen
- Sturdy galvanized steel construction



ITEM NO.	DESCRIPTION	STD QTY	U M
19769	4" Fresh Air Vent	12	EA

Dryer Transition Duct

- UL listed & labeled as foil dryer transition duct
- Steel wire, multi-ply design of aluminum & polyester
- Meets UL 2158A transition duct for clothes dryers
- No UL Label on 25', UL specifies duct venting can only be 8 foot in length



ITEM NO.	DESCRIPTION	STD QTY	U M
20315	[110505] 4" x 8' Metallic Flexible Duct	12	EA
20316	[111504] 4" x 25' Metallic Flexible Duct	1	EA

Flexible Aluminum Pipe

- Plain ended pipe
- Non-insulated general purpose venting duct
- For low & medium operating pressures
- Non-combustible
- Water-tight continuous lock seams
- Class O metal duct



ITEM NO.	DESCRIPTION	STD QTY	U M
20345	[011436] 3" x 8' Flexible Aluminum Pipe	20	EA
20346	[110421] 3" x 25' Flexible Aluminum Pipe	25	EA
20347	[110404] 4" x 8' Flexible Aluminum Pipe	12	EA
20348	[110419] 4" x 25' Flexible Aluminum Pipe	16	EA
20349	[110405] 5" x 8' Flexible Aluminum Pipe	6	EA
20350	[011441] 6" x 8' Flexible Aluminum Pipe	4	EA

Standard Vinyl Hose

- Steel wire support
- 3" diameter is 1" pitch
- 4" diameter is 1-1/2" pitch
- Useful as bathroom fan venting
- Not approved for dryer venting



ITEM NO.	DESCRIPTION	STD QTY	U M
20311	[110563] 3" x 8' White Vinyl Duct	12	EA
20312	[110565] 3" x 50' White Vinyl Duct	1	EA
20313	[110569] 4" x 50' White Vinyl Duct	1	EA

Duct Clamps

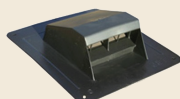
- 4" Plastic: (minimum 3.90"/max 4.25")
- 4" Metal: (minimum 3.25"/max 4.5")



ITEM NO.	DESCRIPTION	STD QTY	U M
20334	[110484] 4" Plastic Clamp, Screw & Nut	100	EA
20335	[111909] 4" Steel Worm Gear Clamp	100	EA

Plastic Roof Vent Caps

- Heavy duty black plastic (polypropylene)
- Impact & UV resistant
- Flexible flange
- Molded screen
- Unique chatter-less flapper
- Flush mount or with a 3" long collar which adapts to 4" & 5" pipe
- Exhausts dryer vents or bathroom fan vents thru the roof



ITEM NO.	DESCRIPTION	STD QTY	U M
20351	[111509] Roof Cap With Louvers	4	EA
20352	[111508] Roof Cap Collar With Louvers	6	EA
20353	[111507] Roof Cap No Louvers	4	EA
20354	[111250] Roof Cap Collar & No Louvers	6	EA