



Ratchet Screwdrivers

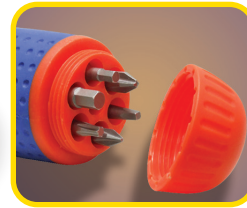
20 'N' 1 Ratchet Screwdriver

Multi-tip Ratchet Screwdriver with 14 magnetic interchangeable double-end bits, three nut drivers, two valve core extractors and one wire bender.

3 Ratchet Driver settings: Forward/Reverse/Manual



Display Package



12 Bit Storage Area

1/4" Nut Driver



5/16" Nut Driver

20N1RSD



7/16" Nut Driver



Wire Bender
(up to 12 gauge)



Valve Core
Removal Tool



Valve Core
Pick Extractor

Removes
Broken
Valve Core

Tubing Tools

3/16" Slotted		RSDBIT1			#1 Phillips	T-10 Torx		RSDBIT5			T-15 Torx
1/4" Slotted		RSDBIT2			#2 Phillips	5/32" Allen		RSDBIT6			1/8" Allen
5/16" Slotted		RSDBIT3			#3 Phillips	1/4" Allen		RSDBIT7			3/16" Allen
S-1 Square		RSDBIT4			S-2 Square	Valve Core Pick Extractor		RSDBIT8			Valve Core Removal Tool

6 'N' 1 Ratchet Screwdriver

Change bits and driver sizes quickly with a pull, flip and click. Work with 4 magnetized bits and 2 driver sizes. Three ratchet driver settings: Forward, Reverse & Manual.



6N1RSD

#1 Phillips



Magnetized

3/16" Slotted

3 Ratchet Driver settings:
Forward/Reverse/Manual

#2 Phillips



Magnetized

1/4" Slotted

1/4" Nut Driver



5/16" Nut Driver

