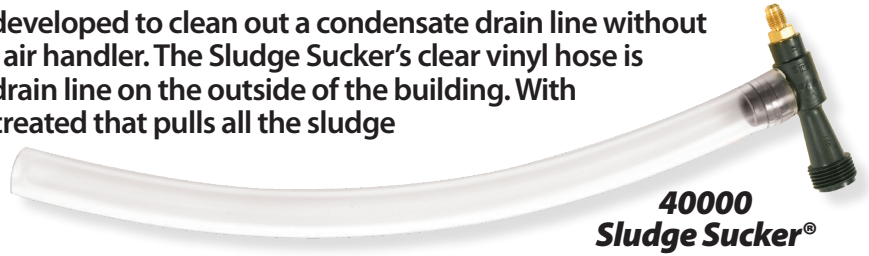




Sludge Sucker[®]

The Sludge Sucker[®] is a tool that was developed to clean out a condensate drain line without accessing the drain pan located in the air handler. The Sludge Sucker's clear vinyl hose is attached to the 3/4" PVC condensate drain line on the outside of the building. With the use of Nitrogen or CO₂, suction is created that pulls all the sludge and algae from the drain pan and drain line; then blows it onto the ground outside.



1. Locate condensate drain line. Sludge Sucker[®] vinyl hose fits inside a 3/4" PVC fitting.

2. Use PVC fittings, if needed, to attach vinyl hose to drain line.

3. Allow Nitrogen to flow through Sludge Sucker[®] fitting and then watch the sludge get sucked out of the drain line and blown onto the ground.



Part#

Description

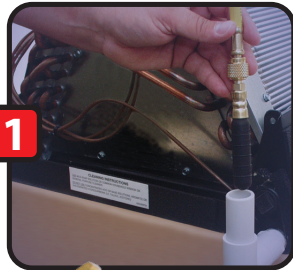
40000

Sludge Sucker[®] with clear vinyl hose

Nitrogen & CO₂

Sludge Blaster[®]/Drain Blaster[®]

1. Insert Sludge Blaster[®] into the "T" connection at the air handler.



2. Allow Nitrogen (at max. 140 PSIG) to flow through, blasting the sludge free.

3. Replace PVC cap on "T" connection. For future service: DO NOT GLUE PERMANENTLY.



40061
Sludge
Blaster[®]



40062

40063

40064

Unclog drain pipes FAST with Drain Blaster[®]. It expands inside the pipe and exerts water pressure on the clog... blasting it free. Attaches to standard 3/4" garden hose.

Unclog A/C condensate drain pipes FAST with Sludge Blaster[®]. It expands inside the pipe and with pressure exerted on the clog, blasts the sludge free. Attaches to standard 1/4" service hose. Pipe capacity: 3/4" to 1" I.D.

Part#	Description	Pipe Capacity
40061	Sludge Blaster [®]	3/4" to 1" I.D.
40062	Drain Blaster [®]	1" to 2" I.D.
40063	Drain Blaster [®]	1 1/2" to 3" I.D.
40064	Drain Blaster [®]	3" to 6" I.D.

