


## LIQUID CHARGER



Liquid charging is recommended when charging blends into refrigeration and air conditioning systems, and a liquid charger adapter is necessary for safe and fast liquid charging through the low pressure side of a system.

- The adapter connects to the cylinder valve or refrigerant can
- To protect the compressor, adapter orifice reduces liquid flow to a level below compressor capacity
- Eliminates the time and work of heating cylinders 

UPC#	Description
41123	1/4" Liquid charging adapter
41124	5/16" Liquid charging adapter
41132	1/4" "O" ring and orifice
41138	5/16" "O" ring and orifice

## "O" RING LUBRICANT

To lubricate "O" rings in manifolds when pistons or "O" rings are being replaced. Use sparingly.



UPC#	Description
41118	"O" ring lubricant (0.75 oz.)

## MANIFOLD PARTS KIT For Series 41, TITAN™, and BRUTE II™ Manifolds



UPC#	Description
41099	Complete kit
41105	Box only with label
Kit contents/quantity	
41041	Yellow handle with screw - TITAN (4)
41042	Blue handle with screw - TITAN (3)
41044	Red handle with screw - TITAN (3)
41048	Handle screws (2) - Series 41/TITAN/BRUTE II (6 sets)
41061	Sight glass (1), retainer (1), gaskets (2) - BRUTE II/TITAN (4 sets)
41090	Handle screws (2) - Older style BRUTE (6 sets)
41091	Yellow handle with screw - BRUTE II (4)
41092	Blue handle with screw - BRUTE II (3)
41094	Red handle with screw - BRUTE II (3)
41096	Valve retaining nut - BRUTE II (4)
41103	3/8" Piston - BRUTE II (8)
41106	Feed screw - BRUTE II (4)
41134	Feed screw - Series 41/TITAN (6)
41135	Valve retaining nut - Series 41/TITAN (6)
41141	Metal handle with screw - Series 41 (4)
41142	Handle screws (2) - Series 41/TITAN/BRUTE II (6 sets)
41133	1/4" Piston - Series 41/TITAN (6)

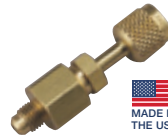
## MANIFOLD CARRYING CASES




Heavy duty blue blow- molded cases are available in four different manifold/hose configurations. Includes handle and a long life top hinge. 

UPC#	Description
40263	Series 41 case - 12 1/4" x 8" x 4 1/4"
40822	Case for BRUTE™ II and Refrigeration System Analyzer (40815) - 6-1/2" x 17" x 14"

## MANIFOLD PARTICULATE FILTER

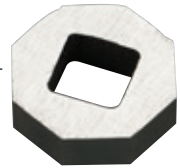


As manifold usage changes with more recovery change outs, more particulate matter is drawn through manifolds. Trap the particles with these fittings before they damage valve seats or pass into your recovery equipment. Replaceable, cleanable screens. 

UPC#	Description
41119	1/4" Manifold particulate filter
41120	3/8" Manifold particulate filter
41121	1/2" Manifold particulate filter
41122	Replacement filter screen (5 pak)

## SIGHT GLASS TOOL

Designed to fit into the TITAN and BRUTE II sight-glass retainers, metal insert allows you to remove or tighten the retainer using a 1/4" drive wrench.



UPC#	Description
41095	Sight glass tool for TITAN/BRUTE 


## SINGLE GAUGE MANIFOLD

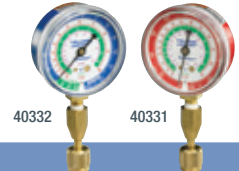
- Check pressure on lo-side of system
- Nylon seals and double "O" ring pistons

UPC#	Description
40318	Lo-side manifold R-12/22/502
40319	Lo-side manifold R-134a/404A/407C
40320	Lo-side manifold R-410A
40326	Lo-side 1/4" valve R-32/410A
40338	Lo-side manifold R-600A
40339	Hi-side manifold R-600A/600/290
40340	Lo-side manifold R-600A/600/290
40349	Low-side manifold R-600a/290



## SINGLE TEST GAUGES

Quick pressure checks - use lo- or hi-side gauge with quick coupler to attach directly to system or tanks. 



UPC#	Description
Gauge with quick coupler and 12" hose - angle coupling	
14811	12" Red hose 1/4" Male flare x 45° quick coupler
14821	12" Blue hose 1/4" Male flare x 45° quick coupler
19110	Quick coupler only
Gauge with 19110 quick coupler for recovery tank pressure checks	
40331	Red pressure °F
40332	Blue compound °F
40341	Red pressure w/quick coupler & hose
40342	Blue compound w/quick coupler & hose
19110	Quick coupler only
40334	Red pressure °F; 0 - 800 psi; R-22/404A/410A
40335	Blue compound °F; 0 - 800 psi; R-22/404A/410A
40344	Red pressure °F; 0 - 800 psi; R-22/404A/410A; with quick coupler and hose
40345	Blue compound °F; 0 - 800 psi; R-22/404A/410A; with quick coupler and hose

1. CHARGING SYSTEMS  
2. GAUGES  
3. RECOVERY MACHINES  
4. VACUUM PUMP SYSTEMS  
5. VACUUM AND CHARGING HOSES  
6. HOSE ADAPTERS, VALVES & PARTS  
7. WIRELESS AND ELECTRONIC INSTRUMENTS  
8. LEAK DETECTORS AND MONITORS  
9. HEATING INSTRUMENTS  
10. SYSTEM TOOLS