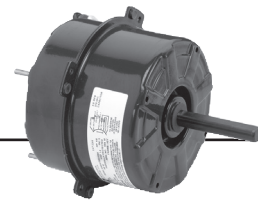


Permanent Split Capacitor Condenser Fan 5.0" Diameter, Totally Enclosed Air Over (TEAO)



APPLICATIONS:

Residential condensing unit fan motor.

FEATURES:

- 42" Leads
- Shaft Down Mount
- #8-32 Studs
Fig A: 4.312" dia. bolt circle
Fig B: 4.464" dia. bolt circle
- Designed for use with 370V Capacitor
- 1/2" Dia. Shaft with Flat
- Reversible Rotation
- Automatic Reset Thermal Overload Protector
- 208v will not be marked on DOE regulated spread-voltage motors. Refer to online data
- **Discount Symbol: DS-3HAC**

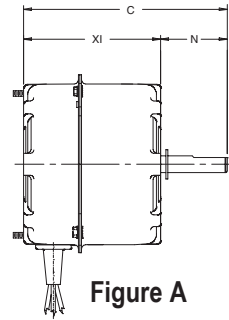


Figure A

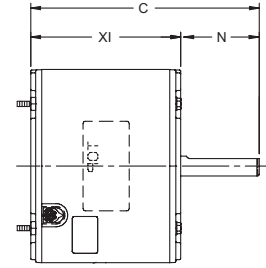


Figure B

"Clam Shell" Single Speed, Stud Mount, Without Capacitor (Fig A)

HP	RPM	Voltage	Catalog Number	List	Bearings	Cap. MFD	Amps	Shaft N	Shell XI	Total C	Ship Wt.	Notes	OEM
1/10	1075	208-230	2243	◆	Ball	5.0	0.75	2.7	4.1	6.9	10		
1/8	1075	208-230	2249	◆	Ball	5.0	0.90	2.7	4.1	6.9	10		
1/5	1075	208-230	2246	◆	Ball	5.0	1.60	2.7	4.1	6.9	10		
1/4	1075	208-230	2250	◆	Ball	7.5	1.70	2.7	4.1	6.9	10		

5.0" Single Speed, Stud Mount, Without Capacitor (Fig B) 4.464 BC

HP	RPM	Voltage	Catalog Number	List	Bearings	Cap. MFD	Amps	Shaft N	Shell XI	Total C	Ship Wt.	Notes	OEM
1/20	1625	230	1989P	◆	SAB	3.0	0.8	2.5	3.8	6.3	8	H35, H42, 98, H20	CO
1/8	1550	230	1675	◆	SAB	5.0	0.8	3.0	3.8	6.8	8	H35, H16	TR
1/8-1/12	1075	208-230	5440H	◆	Ball	5.0	0.8	3.0	4.1	7.1	10		
1/6	1075	208-230	1901	◆	SAB	5.0	1.0	2.0	3.8	5.8	11.4		LE
1/4-1/8	1625	208-230	5442H	◆	Ball	5.0	1.5	3.0	4.6	8.5	9		
1/4-1/6	1075	208-230	5441H	◆	Ball	5.0	1.5	3.0	4.6	7.6	10		

TR= Trane CO = Copeland LE = Lennox

◆ Refer to Motorboss for Pricing

Note 98: 50/60 Hz
 Note H16: CCWLE rotation only
 Note H20: CWLE rotation only
 Note H35: Open Air Over
 Note H42: Shaft-down mounting

