



90-380

90-360 THRU 90-486 RELAYS

Heavy-duty general purpose relay operates in any position.

FEATURES

- Compact, totally enclosed design
- For heating and cooling applications and general switching
- Quiet, reliable and economical

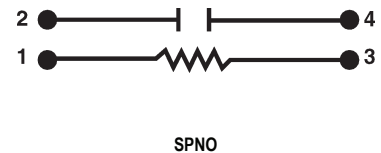
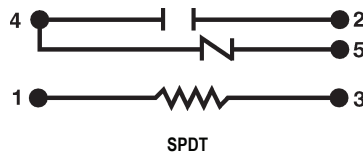
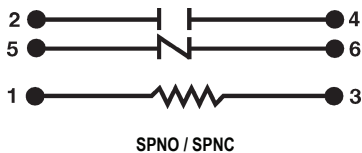
SPECIFICATIONS

Temperature Range.....-40°F to 150°F
 Mechanical Life (no load)..... 1,000,000 operations, 120 operations/min.
 Electrical Life (rated load) 100,000 operations, 6 operations/min.
Load test making inrush rating (0.4 to 0.5 P.F.)
Breaking 100% continuous rating (0.65 to 0.8 P.F.)
 Coils, Frequency 50 / 60 Hz
 Coils, Insulation Class B
 Coils, Termination 1/4" Quick Connect
 Coils, Operate..... 85% of nominal coil voltage; 110% maximum safe operate
 Coils, Duty Cycle.....Continuous
 Weight 2.3 oz.
 UR/CUR File Number E12139
 CSA/CUS Certificate Number LR13360

90-360 THRU 90-486 RELAYS

| COIL VOLTAGE AC (50/60 HZ) | SWITCH ACTION | RES DC OHMS | COIL DATA NOM. CURRENT MA | COIL DATA NOMINAL VA SEALED | INRUSH VA | MODEL NUMBER | ITEM NUMBER |
|----------------------------|---------------|-------------|---------------------------|-----------------------------|-----------|--------------|-------------|
| 24 | SPNO | 77 | 125 | 3 | 4 | 90-360 | 90 360S1 |
| 24 | SPDT | 77 | 125 | 3 | 4 | 90-370 | 90 370S1 |
| 24 | SPNO/SPNC | 77 | 125 | 3 | 4 | 90-380 | 90 380S1 |
| 120 | SPNO | 2,000 | 25 | 3 | 4 | 90-362 | 90 362S1 |
| 120 | SPDT | 2,000 | 25 | 3 | 4 | 90-372 | 90 372S1 |
| 208/240 | SPDT | 6,050 | 12.5 | 3 | 4 | 90-374 | 90 374S1 |
| 208/240 | SPNO/SPNC | 6,050 | 12.5 | 3 | 4 | 90-384 | 90 384S1 |
| 277 | SPNO | 10,300 | 10.8 | 3 | 4 | 90-466 | 90 466S1 |
| 277 | SPDT | 10300 | 10.8 | 3 | 4 | 90-476 | 90 476S1 |
| 277 | SPNO/SPNC | 10300 | 10.8 | 3 | 4 | 90-486 | 90 486S1 |

WIRING DIAGRAMS



90-360 THRU 90-486 RELAYS

Contact Rating

| INDUCTIVE | RESISTIVE |
|--|-------------------------------|
| 12 Amps. Continuous, 60 Amps. Inrush @ 125 VAC | 18 Amps. Continuous @ 277 VAC |
| 8 Amps. Continuous, 48 Amps. Inrush @ 250 VAC | |

