

**Inverter Driven Heat Pump**

**48,000 BTU Circular Flow Cassette**

Job Name \_\_\_\_\_  
 Location \_\_\_\_\_  
 Engineer \_\_\_\_\_  
 Submitted To \_\_\_\_\_  
 Submitted By \_\_\_\_\_  
 Reference \_\_\_\_\_

Date \_\_\_\_\_  
 Approval \_\_\_\_\_  
 Construction \_\_\_\_\_  
 Unit No \_\_\_\_\_  
 Drawing No \_\_\_\_\_

**PRODUCT FEATURES**

- 360° Circular flow distributes air more evenly around the room
- Adjustable louver swing
- Adjustable airflow
- Optional human sensor detects room occupancy for energy savings
- 7mm High density heat exchanger
- Seamless airflow louver
- Grille available in White (UTG-GCGF) or Black (UTG-LCGVCB), sold separately



**MODEL NUMBERS**

Indoor Unit	AUU48RGLX
Outdoor Unit	AOU48RGLX
System	48RGLXC

**EFFICIENCIES**

SEER	17.8	
EER	10.1	
HSPF	10.6	
COP	kW/kW	3.46
	Btu/hW	11.8

**OUTDOOR TEMPERATURE OPERATION RANGE**

Cooling	*F(°C)	-5 to 115 (-20 to 46)
Heating		-5 to 75 (-20 to 24)

**CAPACITIES**

Cooling	Rated	BTU/hW	48,000
	Min.-Max.		17,100-50,000
Heating	Rated		53,000
	Min.-Max.		18,000-55,000

**LINESET REQUIREMENTS**

Connection Method		Flare
Liquid	in (mm)	Ø 3/8 (9.52)
		Ø 5/8 (15.88)
Pre-Charge Length	ft (m)	98 (30)
Minimum Length		16 (5)
Maximum Length		246 (75)
Max. Height Diff.		98 (30)

**INDOOR DIMENSIONS & WEIGHT**

Net (H x W x D)	in	11-5/16 x 33-1/16 x 33-1/16
	mm	288 x 840 x 840
Gross (H x W x D)	in	13-3/8 x 37-13/16 x 37-3/8
	mm	340 x 960 x 950
Net Weight	lb (kg)	64 (29)
Gross Weight		73 (33)

**OUTDOOR DIMENSIONS & WEIGHT**

Net (H x W x D)	in	50-13/16 x 35-7/16 x 13
	mm	1,290 x 900 x 330
Gross (H x W x D)	in	57-1/2 x 41-5/16 x 17-1/2
	mm	1,460 x 1,050 x 445
Net Weight	lb (kg)	209 (95)
Gross Weight		231 (105)

**Warranty Information**



7 Year Compressor, 5 Year Parts out-of-the-box Warranty



10 Year Compressor, 10 Year Parts Warranty when registered within 60 days of installation in a residence



12 Year Compressor, 12 Year Parts Warranty when registered within 60 days of installation in a residence, and installed by a Fujitsu Elite contractor

**ACCESSORIES**

UTG-GCGF	White Cassette Grille
UTG-LCGVCB	Black Cassette Grille
UTY-RNRUZ4	Wired Remote Control
UTY-RSRY	Simple Remote Control
UTY-LBTUC	IR Receiver Kit w/ Wireless Remote
UTY-SHZXC	Human Sensor Kit
UTY-TTRX	Third Party Thermostat Adapter
UTY-TFSXZ2	WiFi Module
KHRS940-25	Fresh Air Kit



Indoor Unit ETL#: 3170288  
 Outdoor Unit ETL#: 91987



**SUBMITTAL 48RGLXC**



**Inverter Driven Heat Pump**

**48,000 BTU Circular Flow Cassette**

**FAN DATA**

Indoor Unit Airflow Rate	Cooling	High	CFM (m3/h)	1,236 (2,100)
		Medium		1,048 (1,780)
		Low		942 (1,600)
		Quiet		777 (1,320)
	Heating	High		1,236 (2,100)
		Medium		1,048 (1,780)
		Low		942 (1,600)
		Quiet		777 (1,320)
Outdoor Unit Airflow Rate	Cooling		4,061 (6,900)	
	Heating		4,091 (6,950)	

**SOUND PRESSURE**

Indoor Unit	Cooling	High	dB (A)	47
		Medium		43
		Low		40
		Quiet		36
	Heating	High		47
		Medium		43
		Low		40
		Quiet		36
Outdoor Unit	Cooling		57	
	Heating		59	

**REFRIGERANT**

Type	R410A		
Charge	lb oz	7 lb 10.1oz	
	g	3,450	
Oil Type	POE (RB68)		

**CASSETTE GRILL (SOLD SEPARATELY)**

Color	UTG-GCGF	White		
	UTG-LCGVB	Black		
Dimensions (H x W x D)	Net	in (mm)	2- 1/16 x 37-3/8 x 37 3/8	
			(53 x 950 x 950)	
	Gross		4-5/16 x 39-3/8 x 39-3/4	
			(110 x 1,000 x 1,000)	
Weight	Net	lb (kg)	13 (6.0)	
	Gross		22 (10)	

**ELECTRICAL SPECIFICATIONS**

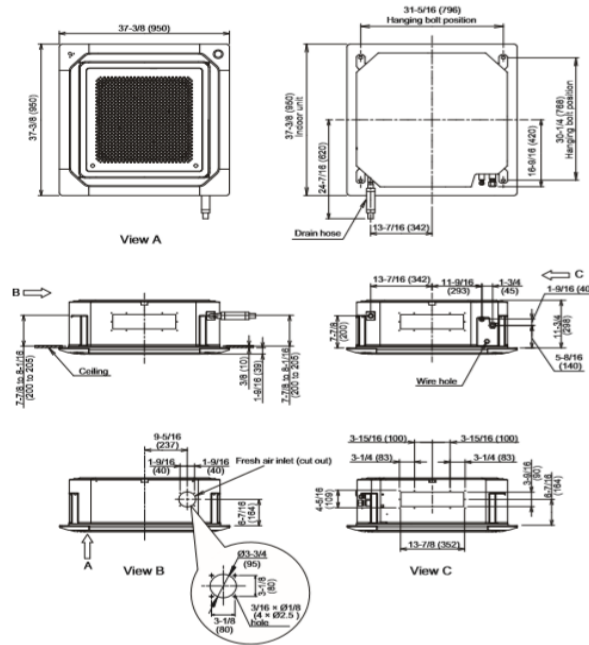
Voltage/Frequency/Phase				208-230V/60Hz/1
Voltage Range				187-253 V
Current	Cooling	Rated	A	20.9
		Heating		Rated
Maximum Operating Current	Cooling	Heating		22.2
		Heating		20.7
Starting Current				20.9
MCA				28.3
Maximum Circuit Breaker				30
Input Power	Cooling	Rated	kW	4.75
		Min.-Max.		0.63-4.91
	Heating	Rated		4.49
Min.-Max.		0.55-4.67		
Power Factor	Cooling		%	97
	Heating			97
<b>OTHER</b>				
Moisture Removal		pints/h (L/h)		9.3 (5.3)
Energy Star	No			
Drain hose	Material		PVC (VP25)	
	Size	in (mm)	Ø 1 (25) (I.D.), Ø 1-1/16 (26.6)	
Operation Range	Cooling	°F (°C)	64 to 90 (18 to 32)	
	Heating	%RH	80 or less	
	Heating	°F (°C)	60 to 86 (16 to 30)	

The Fujitsu logo is a worldwide trademark of Fujitsu General Limited. The Halcyon logo and name is a worldwide trademark of Fujitsu General Limited and is a registered trademark in Japan, the USA and other countries or areas. Copyright 2018 Fujitsu General America, Inc. Fujitsu's products are subject to continuous improvements. Fujitsu reserves the right to modify product design, specifications and information in this brochure without notice and without incurring any obligations.

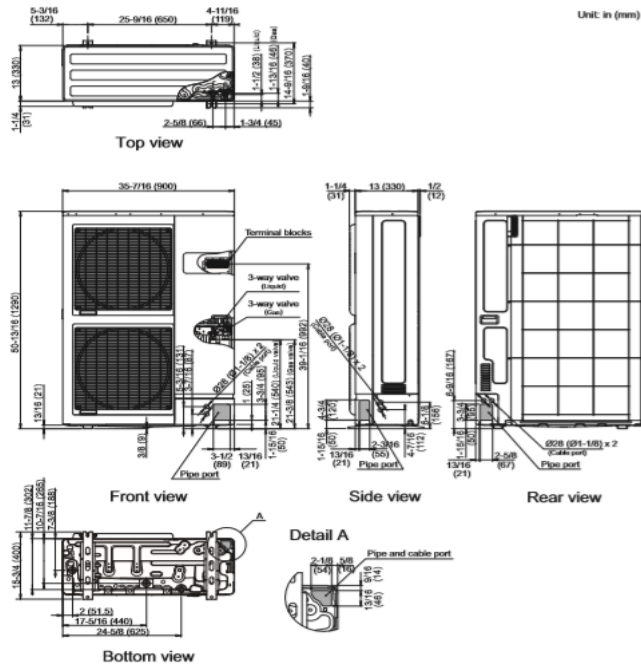
Note: Specifications are based on the following conditions:  
 Cooling: Indoor temperature of 80°F (26.7°C) DB/67°F (19.4°C) WB, and outdoor temperature of 95°F (35°C) DB/75°F (23.9°C) WB. Heating: Indoor temperature of 70°F (21.1°C) DB/60°F (15.6°C) WB, and outdoor temperature of 47°F (8.3°C) DB/43°F (6.1°C) WB. Pipe length: 25ft. (7.5m), Height difference: 0ft. (0m) (Outdoor unit - indoor unit).

DIMENSIONS

Units: In. (mm)



2-2. Models: AOU42RGLX and AOU48RGLX



The Fujitsu logo is a worldwide trademark of Fujitsu General Limited. The Halcyon logo and name is a worldwide trademark of Fujitsu General Limited and is a registered trademark in Japan, the USA and other countries or areas. Copyright 2018 Fujitsu General America, Inc. Fujitsu's products are subject to continuous improvements. Fujitsu reserves the right to modify product design, specifications and information in this brochure without notice and without incurring any obligations.

Note: Specifications are based on the following conditions:  
 Cooling: Indoor temperature of 80°F (26.7°C) DB/67°F (19.4°C) WB, and outdoor temperature of 95°F (35°C) DB/75°F (23.9°C) WB. Heating: Indoor temperature of 70°F (21.1°C) DB/60°F (15.6°C) WB, and outdoor temperature of 47°F (8.3°C) DB/43°F (6.1°C) WB. Pipe length: 25ft. (7.5m), Height difference: 0ft. (0m) (Outdoor unit - indoor unit).