

# OIL & GAS IGNITION



OMNI®  
Universal  
Ignitor



**Allanson**

*Leaders in Innovative Electrics*



## INDEX

Page

Electronic Oil Ignitors .....	3
Production Transformers .....	4,5,6,7,8
Universal Service Replacement Ignitor – OMNI® .....	9
Universal Service Replacement Transformers .....	10
Service Replacement Transformers .....	11
Industrial Gas Ignitors .....	12
Industrial Gas Transformers .....	13
Industrial Transformers .....	14
Accessories .....	14
Oil Ignition Testing Equipment – Chek-Mate® .....	15
Base Plate Drawings .....	16,17
Cross Reference Charts .....	18,19
Contact Information .....	B.C.

## FORWARD

For over 80 years Allanson's Ignition transformers have provided quality and performance for many in the oil heating industry. Oil heat service managers have counted on our proven ignition technology.

This catalog serves as a guide for the proper selection of your transformer Requirements. Our "catalog" numbers are coded descriptions of the basic electrical construction. Our "type" numbers describe the mounting details.

Our BT series is a comprehensive collection of interchangeable standard can replacement transformers for use with interchangeable plates. Our OMNI® Ignitor makes service calls a breeze as it is a Universal replacement, mounting to any manufacturer's mounting plates.

ELECTRICAL SPEC.	PRIMARY POWER	CATALOG NO.	TYPICAL TYPE NO.
10,000 Volt Mid Point Ground Large Can	120 Volt 60 Hz	421	104
	240 Volt 60 Hz	444	
	240 Volt 50 Hz	911	
	120 Volt 50 Hz	912	
10,000 Volt MPG Small Can Series	120 Volt 60 Hz	2721	619
	220 Volt 50 Hz	2729	
	120 Volt 50 Hz	2730	
	240 Volt 60 Hz	2744	
6,000 Volt One End Ground	120 Volt 50/60 Hz	1092	"F"
	240 Volt 60 Hz	1112	
	240 Volt 50 Hz	1196	
6,000 Volt One End Ground Electronic	120 Volt 50/60 Hz	2260	TP
12,000 Volt Mid Point Ground	120 Volt 60 Hz	2714	633
17,500 V peak Mid Point Ground Electronic	120 Volt 50/60 Hz	2275	628G
	240 Volt 50/60 Hz	2280	
	12 Vdc	2270	

# ELECTRONIC OIL IGNITORS

120 Volt Primary, 50/60 Hz, 17,500 V peak Secondary, 45mA, MPG



**A** CAT 2275 TYPE 456, AERO

**B** CAT 2275 TYPE 605, BECKETT S

**C** CAT 2275 TYPE 619, WAYNE HI SPEED M/MH

**D** CAT 2275 TYPE 620, WAYNE E

**E** CAT 2275 TYPE 628G, BECKETT A, AF, AFG

**F** CAT 2275 TYPE 629, CARLIN 17.5, 200, 201, 500, 501 CRD

**G** CAT 2275 TYPE 630, CARLIN 99, 100, 101, CRD

**H** CAT 2275 TYPE 633, CARLIN 601 (Available with Rajah Connector Caps, see photo below)

**I** CAT 2275 TYPE 647, WAYNE HS

**J** CAT 2275 TYPE 653, WEIL McLAIN, QB 180

**K** CAT 2275 TYPE 658, BECKETT AFII



**Electronic Ignition Transformer Service Kit Includes:**

2 OMNI® Ignitors, a selection of 5 mounting plates, and one 54-740 universal contact replacement kit

**Other Mounting Plates Available:**

- |  |                |
|--|----------------|
| 2600 AERO                                | 2601 BECKETT S |
| 2602 WAYNE HI SPEED M/MH                 | 2603 WAYNE E   |
| 2604 BECKETT A, AF, AFG                  |                |
| 2605 CARLIN 99, 100, 101                 |                |
| 2609 CARLIN 17.5, 200, 201, 500, 501 CRD |                |



Rajah Connector Caps for 2275-633 (H)

All 2275 style transformers also available in 240 Volt Primary, 17,500 Secondary, 50/60 Hz.

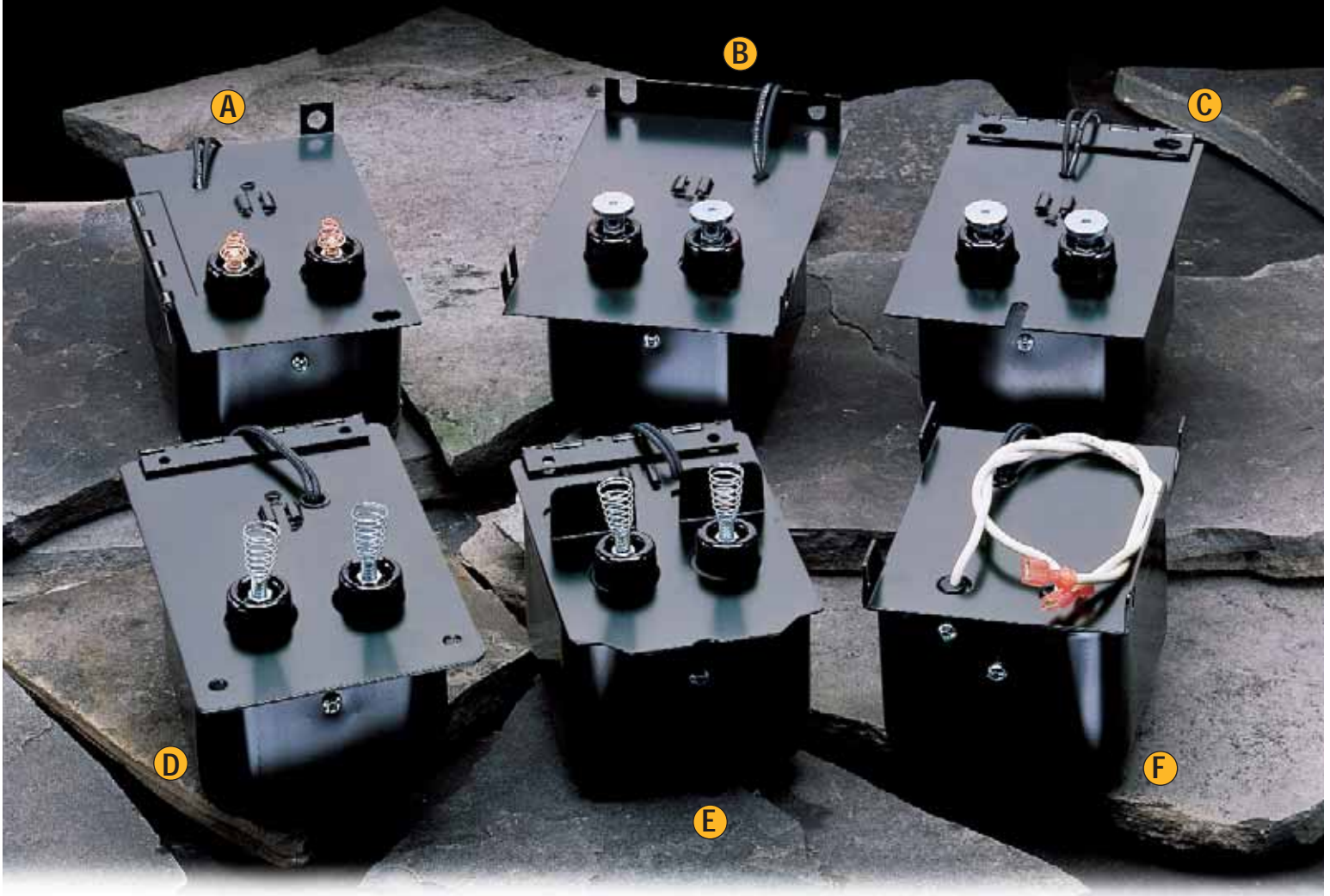
To order, replace 2275 with 2280 – Example: 2280-628G.

All 2275 style transformers also available in 12Vdc. To order, replace 2275 with 2270 – Example: 2270-628G



# PRODUCTION TRANSFORMERS

120 Volt Primary 60 Hz, 10,000 Volt Secondary, 23mA, MPG



**A** CAT 2721 TYPE 631A, ABC SUNRAY

Webster: 313-25AB86, France: 5LAY-12

**B** CAT 2721 TYPE 411, ABC

Webster: 313-25AB59, France: 5LAY-20

**C** CAT 2721 TYPE 456, AERO

Webster: 313-24ABAER, France: 5LAY-56

**D** CAT 2721 TYPE 605, BECKETT S

Webster: 313-28AB92/313-28AB-BF, France: 5LAY-05

**E** CAT 2721 TYPE 628G, BECKETT A, AF, AFG  
*THIS SHIPS COMPLETE WITH GASKET*

Webster: 313-28AB-BAF, France: 5LAY-04

**F** CAT 2741 TYPE 658, BECKETT AF II

Webster: 3-32AB-BAF

# PRODUCTION TRANSFORMERS

120 Volt Primary 60 Hz, 10,000 Volt Secondary, 23mA, MPG



**A** CAT 2721 TYPE 629, CARLIN 17.5 FR,  
200, 201, 500, 501 CRD

Webster: 313-24AB-81, France: 5LAY-16

**B** CAT 2721 TYPE 630, CARLIN 99, 100,  
101, CARD MISER

Webster: 313-28AB85, France: 5LAY-15

**C** CAT 2721 TYPE 589, GRIMSBY

**D** CAT 2721 TYPE 627, BROCK

France: 5LAY-57

**E** CAT 2721 TYPE 667, REZNOR

No longer available, use 2721-628G instead.



# PRODUCTION TRANSFORMERS

120 Volt Primary 60 Hz, 10,000 Volt Secondary, 23mA, MPG



**A** CAT 2721 TYPE 448, NU WAY (LARGE PLATE)

Webster: 313-24AB80

**B** CAT 2721 TYPE 572, NU WAY (SMALL PLATE)

Webster: 313-24AB82

**C** CAT 2721 TYPE 069, JOHN WOOD

No longer available, Use 2275 + 069 plate

**D** CAT 2721 TYPE 368M, METRO

No longer available, Use 2721 + 456 plate

**E** CAT 2721 TYPE 619, WAYNE HI SPEED M/MH

Webster: 313-28AB91, France: 5LAY-03

**F** CAT 2721 TYPE 620, WAYNE E

Webster: 313-25AB78, France: 5LAY-30

**G** CAT 2721 TYPE 647, WAYNE BLUE ANGEL EAGLE ONE

Webster: 313-28AB205W/313-28ABWHS, France: 5LAY-31  
CAT 2721 TYPE 668 WAYNE BLUE ANGEL EAGLE ONE same as "G" less weld bolts.

# PRODUCTION TRANSFORMERS

120 Volt Primary 60 Hz, 10,000 Volt Secondary, 23mA, MPG



**A** CAT 421 TYPE 104E, AERO,  
METAL MASTER, SUNRAY

Webster: 312-26AB022

**B** CAT 421 TYPE 254A, BARRIERE

**C** CAT 421 TYPE 340, ARMSTRONG/ESSO

Webster: 312-25ABE1, France: LGPW-2

**D** CAT 421 TYPE 558, CONROY

**E** CAT 421 TYPE 216, ARCO AMERICAN STANDARD  
No longer available, use "F" CAT 421-557

**F** CAT 421 TYPE 557, ARCO AMERICAN STANDARD  
Webster: 312-26ABE23, France: LGHW

**G** CAT 421 TYPE 104, ACME/QUIET HEET  
France: LGNV No longer available, use "A" CAT 421-104E

# PRODUCTION TRANSFORMERS

120 Volt Primary 60 Hz, 10,000 Volt Secondary, 23mA, MPG



**A** CAT 421 TYPE 655, POWER FLAME

Webster: 312-25AB0418

**B** CAT 421 TYPE 659/660, CLEAVER  
BROOKS/INDUSTRIAL COMBUSTION

Webster: 312-08A097 / 312-810169

**C** CAT 421 TYPE 661, GORDON PIATT

Webster: 313-25AB100

**D** CAT 421 TYPE 331, LENNOX

Webster: 313-25AB62

**E** CAT 421 TYPE 430, DUCANE

Webster: 313-25AB90, France 5LAY-06

**F** CAT 421 TYPE 664, WEBSTER ENGINEERING

**G** CAT 421 TYPE 663, PVI INDUSTRIES



# UNIVERSAL SERVICE REPLACEMENT IGNITOR

120 Volts, 50/60 Hz, 17,500 V peak Secondary, 45mA, MPG



## OMNI<sup>®</sup>

UNIVERSAL IGNITOR

CAT 2275 TYPE U

- The only Universal Ignitor.
- Mount OMNI onto any previous ignitor mounting plate.
- No need to carry extra mounting plates. (Available upon request. See page 17 for plate models)
- Makes your service calls quick and easy.
- Shipped complete with required hardware.

# UNIVERSAL SERVICE REPLACEMENT TRANSFORMER

120 Volt Primary 60 Hz, 10,000 Volt Secondary, 23mA, MPG



## CAT 421 TYPE BT 636 COMPLETE WITH REQUIRED HARDWARE

Webster: 312-25AX0600

France: LAUV

## CAT 444 TYPE BT 636

240 Volt Primary, 60 Hz

### Six Position Adaptability

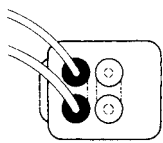


FIG. 1

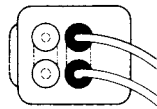


FIG. 2

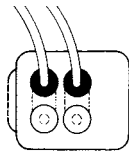


FIG. 3

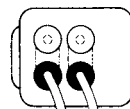


FIG. 4

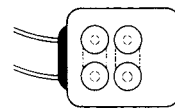


FIG. 5

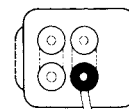


FIG. 6 \*

ALSO AVAILABLE UPON REQUEST 5 WAY REPLACEMENT TRANSFORMER CAT 421 TYPE BT 384  
240 VOLT PRIMARY = 444 TYPE BT 636

\* For use only if 5 kV required.

# SERVICE REPLACEMENT TRANSFORMERS

120 Volt Primary 60 Hz, 10,000 Volt Secondary, 23mA, MPG



**A** CAT 421 TYPE BT 290

Webster: 312-24AB0202, France: LGDV

**B** CAT 421 TYPE BT 299

No longer available, use "D" 421-387 instead.  
Webster: 312-25A0202, France: LFBV

**C** CAT 421 TYPE BT 332

Webster: 312-25AB0202, France: LGFV

**D** CAT 421 TYPE BT 387

Webster: 312-24A0202, France: LFAV

**E** CAT 421 TYPE BT 066

No longer available, use "C" 421-BT 332

**F** CAT 421 TYPE BT 104

Webster: 312-24AB0237, France: LGCV

**G** CAT 421 TYPE BT 240

Webster: 312-24ABE202, France: LGDW  
No longer available, use "C" 421-BT 332



# INDUSTRIAL GAS IGNITORS

120 Volts, 50/60 Hz, 15,600 V peak, 65mA, OEG



- 3 models to choose from to fit your unique application requirements
- Constant Duty
- No clumsy connections
- Energy efficient, draws 1/2 amp
- Meets or exceeds requirements for EMI/ RFI conditions
- Quick and easy to install
- 3 way mounting

Cat 2260 Type TW, Mounting tabs with traditional bottom exit pigtails, 2 way mounting

Cat 2260 Type TP, Mounting tabs, primary plug set with pig tails, 2 way mounting

Cat 2260 Type P, Center mounting, Primary wire plug with pig tails set, 3 way mounting

(Also available in 240 Volt Primary, to order replace 2260 with 2265)

#### GTO Connector Cable:

Part#: GTO-C-18 : 18" High Voltage wire (6 per package)

# INDUSTRIAL GAS TRANSFORMERS

120 Volt Primary 50/60 Hz, 6,000 Volt Secondary OEG

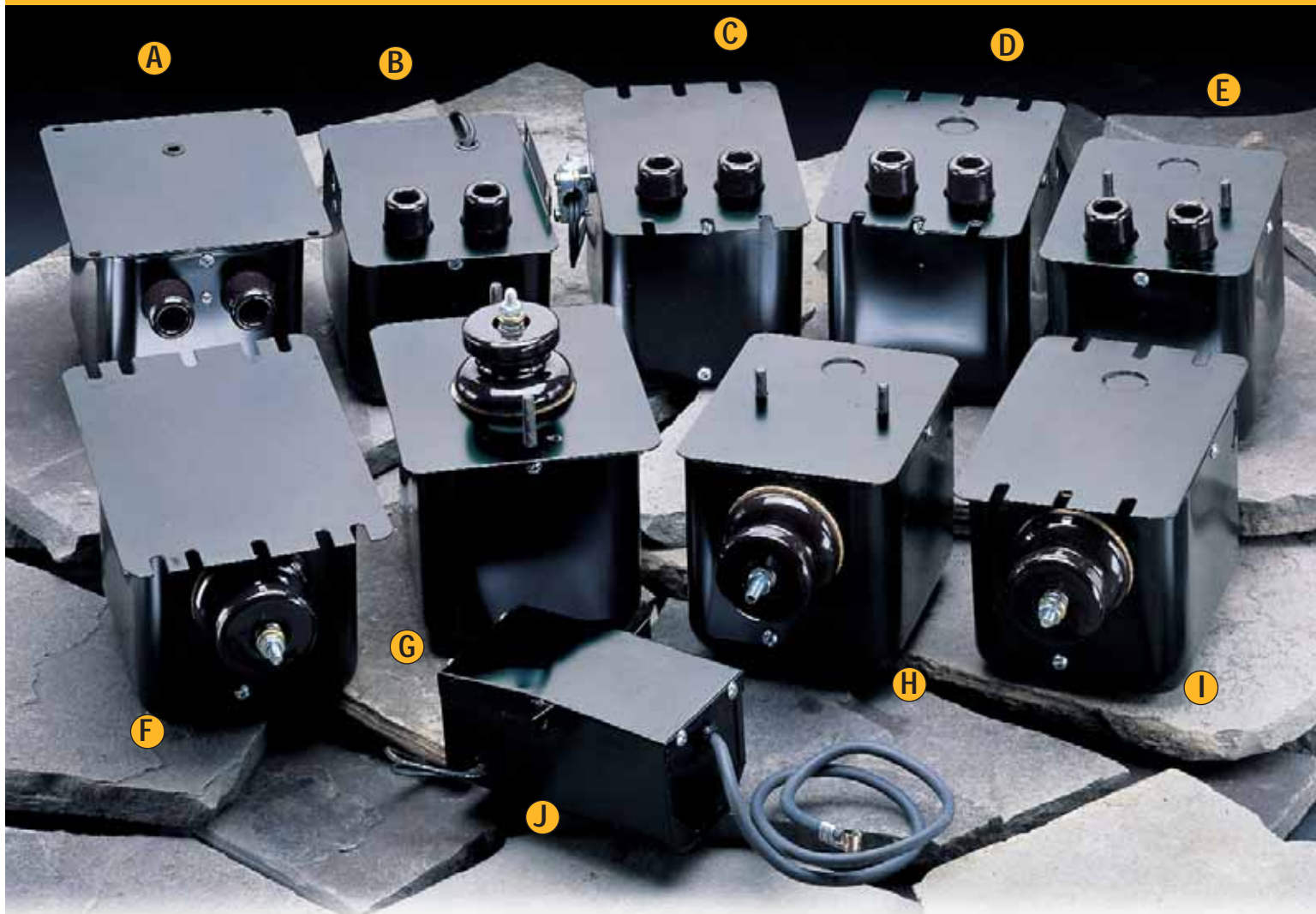


- A** 1092 N, RAY BURNER  
Webster: 613-6A10, France: 3RAFYR-14
- B** 1092 PF, POWER FLAME  
Webster: 612-6A056
- C** 1092 S, GORDON-PIATT  
Webster: 612-6A020 / 612-6A072
- D** 1092 F  
Webster: 612-6A7, France: 6EEGW-2  
For bushing example refer to C

- E** 1092 H, CLEAVER BROOKS  
Webster: 612-8A021
- F** 1092 K, DUNHAM-BUSH, IRON FIREMAN  
Webster: 612-8AB017
- G** CAT 1092 NA, NORTH AMERICAN  
Webster: 612-8A02
- H** CAT 1092 SG, WEBSTER  
(PRIMARY HAS 3 WIRES), ONE IS GROUND WIRE



# INDUSTRIAL TRANSFORMERS



## 120 Volt Primary, 60 Hz, 12,000 Volt Secondary Mid Point Ground

- A** CAT 2714 TYPE 359, CLEAVER BROOKS  
Webster: 12-8A08, France: 2KAAVS-1
- B** CAT 2714 TYPE 633, CARLIN  
Webster: 12-8AB7, France: 2KACVS-2
- C** CAT 2714 TYPE 656, BECKETT  
Webster: 12-8AB16
- D** CAT 2714 TYPE 662, GORDON-PIATT  
Webster: 12-8AB02
- E** CAT 2714 TYPE 655, POWER FLAME

## 120 Volt Primary, 60 Hz, 10,000 Volt Secondary One End Ground

- F** CAT 542 A  
Webster: 312 6A0456
- H** CAT 542 PF,  
POWER FLAME
- G** CAT 542 C  
No longer available, use "F" 542A
- I** Cat 542 GP, Gordon Piatt  
Webster: 312-9A0456

## 120 Volt Primary, 60 Hz, 5,000 Volt Secondary One End Ground

- J** CAT 2709 TYPE 001, DESA KOEHRING,  
HOMELITE AMCA CENTURY  
Webster: MCC-WA5020C9  
No longer available, use 2260 TW on page 12

## Accessories



25-409  
(1/4-20x1)

29-294

29-295

54-742  
6 sets per package

29-276

25-232  
4 per package

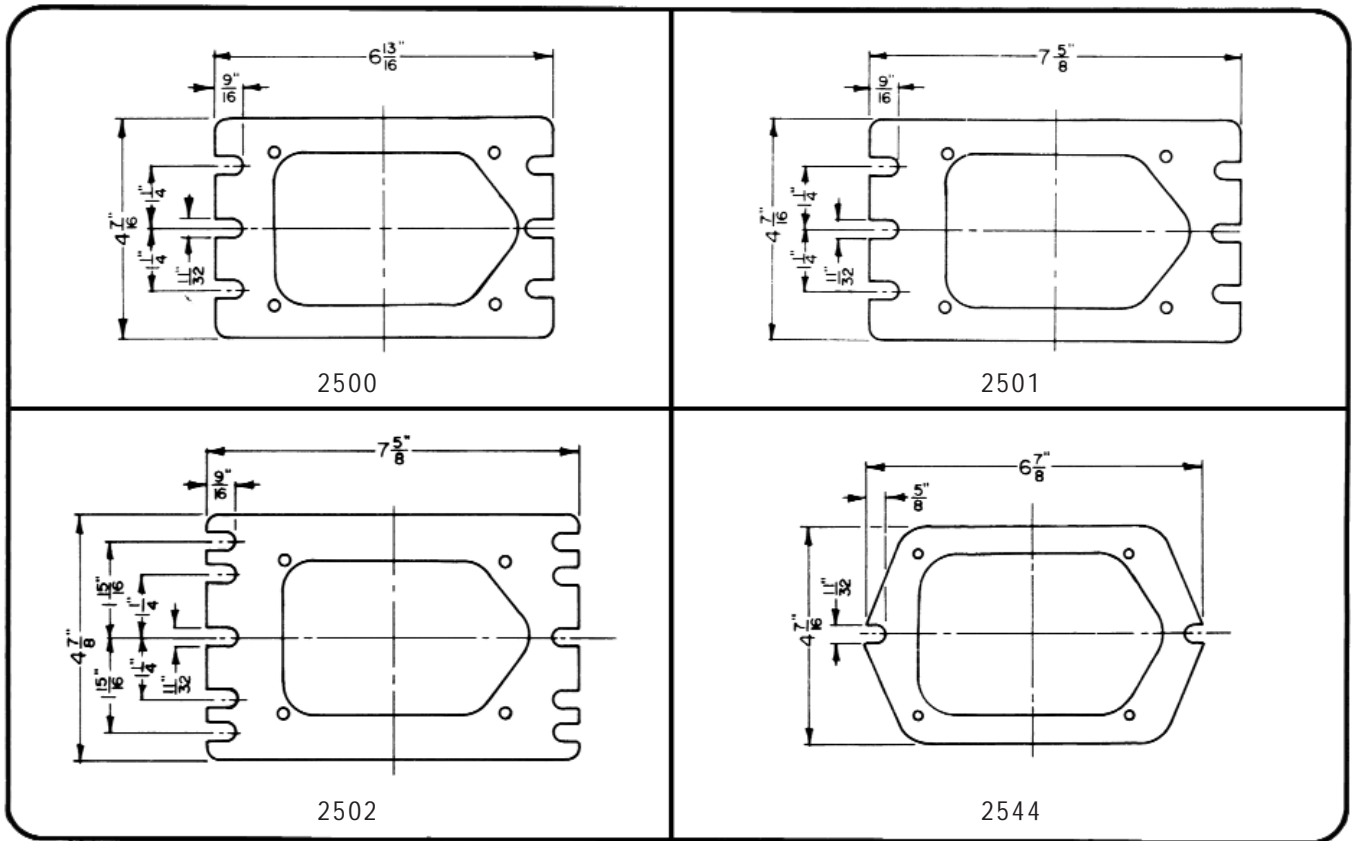




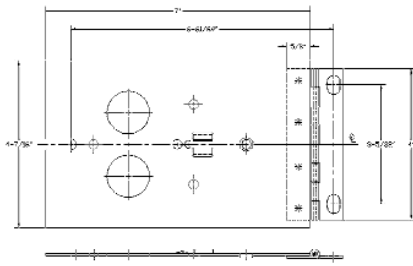
## Chek-Mate®

- Chek-Mate tests all manufacturer's Electronic Ignitors and Iron Core Transformers
- Safe and reliable
- Easy to use, lightweight and compact
- "Test OK" LED indicator let's you know if unit is good and producing enough spark to ignite the fuel oil
- Makes Service calls quick and easy

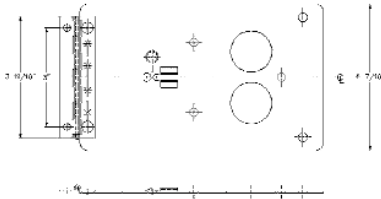
## INTERCHANGEABLE BASEPLATE DRAWINGS



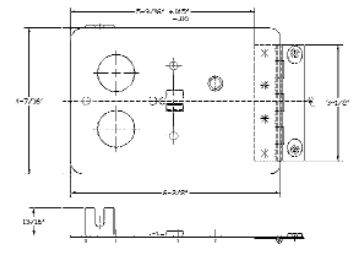
INTERCHANGEABLE BASEPLATE DRAWINGS



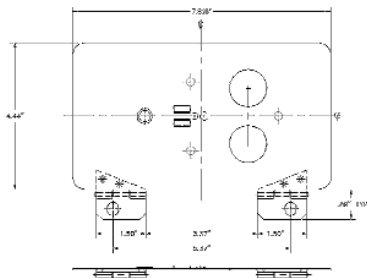
2600 AERO



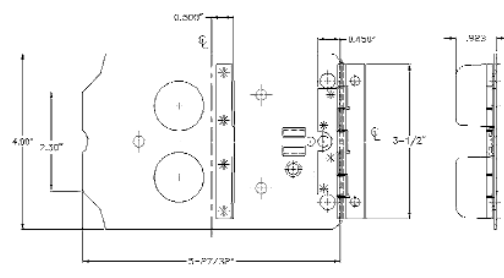
2601 BECKETT S



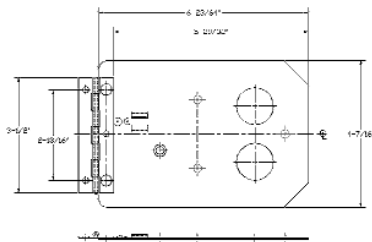
2602 WAYNE HI SPEED



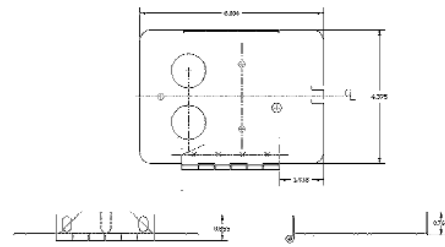
2603 WAYNE E



2604 BECKETT A, AF, AFG



2605 CARLIN 99-101



2609 CARLIN 17.5-501 CRD



# TRANSFORMER CROSS REFERENCE CHART

BURNER MANUFACTURER	Allanson	Dongan	France	Webster	Sid Harvey	Thermolok
<b>10,000 Volt Secondary Mid Point Ground</b>						
ABC	2721-411	XD-AB207	5LAY-20	313-25AB59	T-84	C-792
ABC/SUNRAY	2721-631A	XD-AB201	5LAY-12	313-25AB86	T-29-15B	TSR-10
ABC-CRANE	2721-409	A10-SV351	LKR-2	313-25AB73	T-86	C-793
ABC-D&LC	2721-452		5LAY-11	313-26AB65	T-34-B	
ACME/QUIET HEET	421-104	A10-SR12	LGNV		T-31N	C-53
ACME-WEATHERALL	2721-457		LKE	3-25AB-AH	T-82	
AERO	2721-456	XD-AR211	5LAY-56	3-24AB-AER	T-87	TA-10
AERO/SUNRAY	421-104E			312-26AB022	T-29-10B	
ARCO/AMER.STANDARD	421-557 (replaces 421-216)					
ARCO/AMER.STANDARD	421-557	A10-SP18	LGHW	312-26ABE23	T-183B	C-483
ARMSTRONG/ESSO	421-340		LGPW-2	312-25ABE1	T-80-3M	
BARRIERE	421-254A					
BECKETT A, AF, AFG	2721-628G	XD-BK103	5LAY-04	3-28AB-BAF	T-92	TB-10
BECKETT AFII	2741-658					
BECKETT S	2721-605	XD-BK204	5LAY-05	3-28AB-BS/3-28AB92	T-90	TB-11
BROCK	2721-627					
CARLIN 99,100 CRD	2721-630	XD-CR205	5LAY-15	313-28AB85	T-94	TC-10
CARLIIN 200, 201, 500 CRD	2721-629	XD-CR206	5LAY-16	313-24AB81	T-95	TC-11
CLEAN BURN	2721-654					
CLEAVER BROOKS	421-659			312-8A097/312-810169		
CONROY	421-558					
DELCO P-200	2721-222A	A10-SQ182	LKP	313-24AB68	T-24N	
DUCANE	421-430	XD-DC212	5LAY-06	313-25AB90		
GORDON PIATT	421-661					
GRIMSBY	2721-589					
INDUSTRIAL COMBUSTION	421-660					
JOHN WOOD	2275-069 (replaces 2721-069)					
LENNOX	421-331	A10-S32		313-25AB62	T-265	C-823
METAL MASTER	421-262	A10-S32	LGM		T-28B	C-544
METRO	2275U + 368M (replaces 2721-368M)					
NU-WAY (LARGE PLATE)	2721-448			313-24AB80	T-120	C-794
NU-WAY (SMALL PLATE)	2721-572			313-24AB82	T-122	C-807
POWER FLAME	421-655					
PVI INDUSTRIES	421-663					
REZNOR	2721-628G (replaces 2721-667)					
SUNRAY	421-104E			312-26AB022	T-29-10B	C-733
WAYNE	2721-637		5LAY-21	313-25AB49	T-50	
WAYNE (BLUE ANGEL)	2721-668	XD-WN209	5LAY-31	313-28AB205W/313-28ABWHS		T-89-10
WAYNE E	2721-620	XD-WN208	5LAY-30	313-25AB78	T-88	C-799
WAYNE HI SPEED M MH	2721-619	XD-WN202	5LAY-03	313-28AB91	T-93	TW-10
WEBSTER ENGINEERING	421-664					
YORK SHIPLEY	421-095		LGEW-1	312-26ABE407	T-25B	
<b>12,000 Volt Secondary Mid Point Ground</b>						
BECKETT	2714-656			12-8AB16		
CARLIN	2714-633	A12-SV10	2KACVS-2	12-8AB7	T-12	
CLEAVER BROOKS	2714-359	A12-SJ10	2KAAVS-1	12-8A08		
GORDON PIATT	2714-662					
POWER FLAME	2714-655					

# TRANSFORMER & IGNITOR CROSS REFERENCE CHARTS

BURNER MANUFACTURER	Allanson	Dongan	France	Webster	Sid Harvey	Thermelok
<b>10,000 Volt Secondary Mid Point Ground – Less Mounting Plate Replacement Type</b>						
UNIVERSAL 6 WAY	421-BT636		LAUV	312-25AX0600	T1-15	T-628
UNIVERSAL 5 WAY	421-BT384			312-25AX0500		
	421-BT053			312-24ABE203		
	421-BT066					
	421-BT104	A10-SR10	LGCV	312-24AB0237	T-31N	
	421-BT240	A10-SX10	LGDW	312-24ABE202	T-18N	C-456
	421-BT276	A10-SW10	LGEV	312-25AB0237	T-17FM	C-551
	421-BT290	A10-SQ10	LGDV	312-24AB0202	T-17N	C-554
	421-BT299	A10-SJ10	LFBV	312-25A0202	T-21M	
	421-BT332	A10-SV10	LGFV	312-25AB0202	T-17M	C-555
	(replaces 421-BT066 and 421-BT240)					
	421-BT387	A10-SF10	LFAV	312-24A0202	T-21N	
<b>INDUSTRIAL TYPE IGNITION TRANSFORMERS – 6,000 Volt Secondary One End Ground, 120 Volt, 50/60 Hz</b>						
CLEAVER BROOKS	1092-H			612-8A021		
GORDON-PIATT	1092-S			612-6A020/612-6A072		
IRON FIREMAN, DUNHAM-BUSH	1092-K			612-8AB017		
GAS APPLICATION						
BX CONNECTOR	1092-F	A06-SA6	6EEGW-2	612-6A7	T-246N	
NORTH AMERICAN	1092-NA			612-8A02		
POWER FLAME	1092-PF			612-6A056		
RAY BURNER	1092-N	A06-SD7	3RAFYR-14	613-6A10	T-193N	
WEBSTER (PRI. HAS 3 WIRES)	1092-SG					
<b>10,000 Volt Secondary One End Ground 120 Volt</b>						
OIL APPLICATION	542-A	A10-LA22		312-6A0456		
BABCOX-WILCOX	542-C	A10-LN2X				
GORDON PIATT	542-GP			312-9A0456		
POWER FLAME	542-PF					

BURNER MANUFACTURER	ALLANSON	BECKETT	FRANCE	CARLIN	SID HARVEY
<b>OMNI® IGNITOR</b>	2275U	<b>&lt; NO UNIVERSAL AVAILABLE &gt;</b>			T96I
AERO	2275-456	51828U	10SAY-56	41000-SO-AR	T87E
BECKETT A, AF, AFG	2275-628G	51771U	10SAY-04	41000-SO-BK1	T92E(1)
BECKETT AFII	2275-658	51805U	10SAYL-70	----	T97E
BECKETT S	2275-605	51824U	10SAY-05	41000-SO-BK2	T90E
CARLIN 17.5, 200, 201, 500, 501, CRD	2275-629	51840U	10SAY-16	41000-SO-SC	T95E
CARLIN 99, 100, 101, CRD	2275-630	51826U	10SAY-15	41000-SO-CAS	T94E
CARLIN 601 & Up	2275-633	51880U	----	41000-SO-LC	----
WAYNE Hi Speed M/MH	2275-619	51825U	10SAY-03	41000-SO-WA3	T93E
WAYNE E	2275-620	51827U	10SAY-30	41000-SO-WA2	T88E
WAYNE HS	2275-647	51836U	10-SAY-31	41000-SO-WA1	T89-10E
WEIL MCLAIN	2275-653	51837U	10SAY-32	41000-SO-WM	T96 E
<b>IGNITOR KIT</b>	2275-KIT1	51835	10SAY-KIT	41000-SO-KIT	T97K



CANADA: 33 Cranfield Road, Toronto, Ontario M4B 3H2  
Telephone (416) 755-1191 • Fax (877) 278-0907  
Toll Free **1-800-661-7251**

U.S.: 99 Adams Blvd., E. Farmingdale, NY 11735  
Telephone (631) 293-3880 • FAX (631) 293-3470

[www.allanson.com](http://www.allanson.com)