

PRODUCT INFORMATION PACKET

FASCO®

Model No: D1152

Catalog No: D1152

OEM Replacement Motor, 1/20 HP, 1 Ph, 60 Hz, 115 V, 1500/1300 RPM, 1 Speed, 3.3" Diameter, OAO



Regal and Fasco are trademarks of Regal Rexnord Corporation or one of its affiliated companies.

©2023 Regal Rexnord Corporation, All Rights Reserved. MC017097E

RegalRexnord



Nameplate Specifications

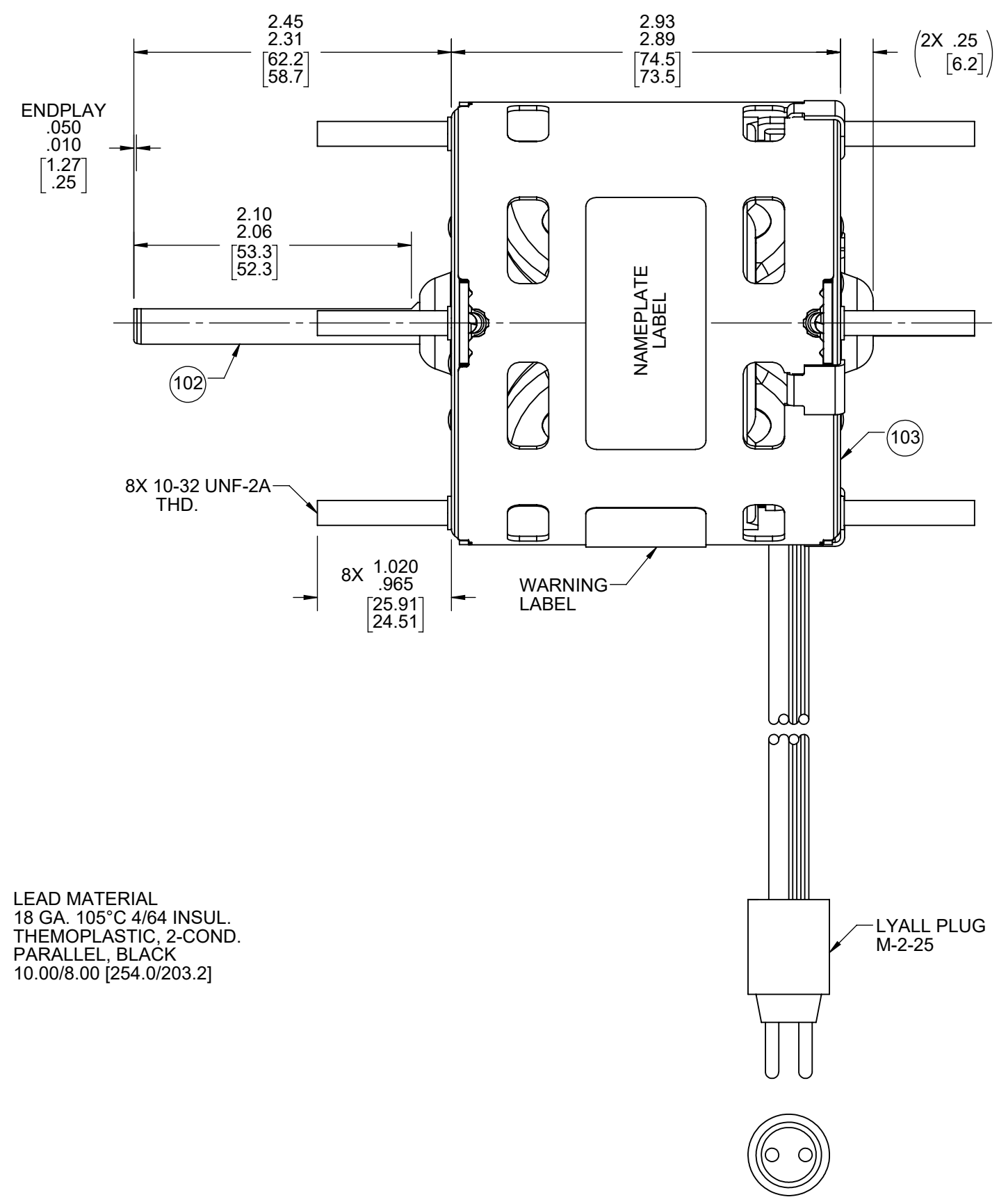
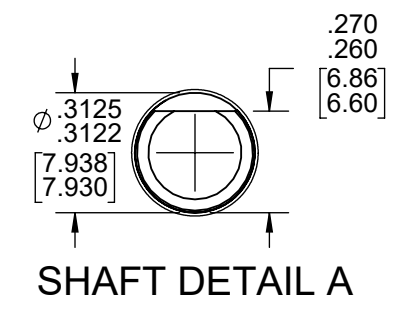
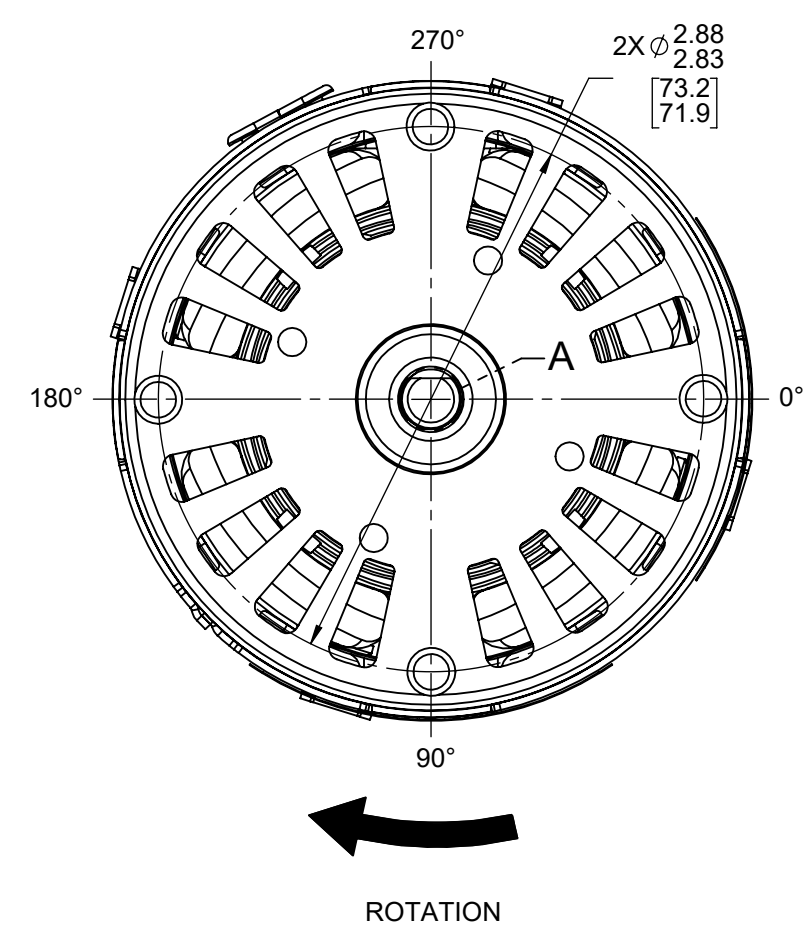
Phase	1	Output HP	1/20 Hp
Output KW	0.04 kW	Voltage	115 V
Speed	1500/1300 rpm	Service Factor	1
Frame	3.3	Enclosure	Open Air Over
Thermal Protection	Thermally Protected	Ambient Temperature	40 °C
Frequency	60 Hz	Current	2.10 A
Duty	Air Over	Insulation Class	B
UL	Recognized	CSA	Y
CE	N	Number of Speeds	1

Technical Specifications

Electrical Type	Shaded Pole	Starting Method	Across The Line
Poles	4	Rotation	Clockwise Shaft End
Mounting	Extended Studs	Drive End Bearing	Sleeve
Opp Drive End Bearing	Sleeve	Frame Material	Steel
Shaft Type	Flat	Overall Length	5.63 in
Frame Length	2.70 in	Shaft Diameter	0.313 in
Shaft Extension	2.35 in		
Connection Drawing	NA	Outline Drawing	71635122

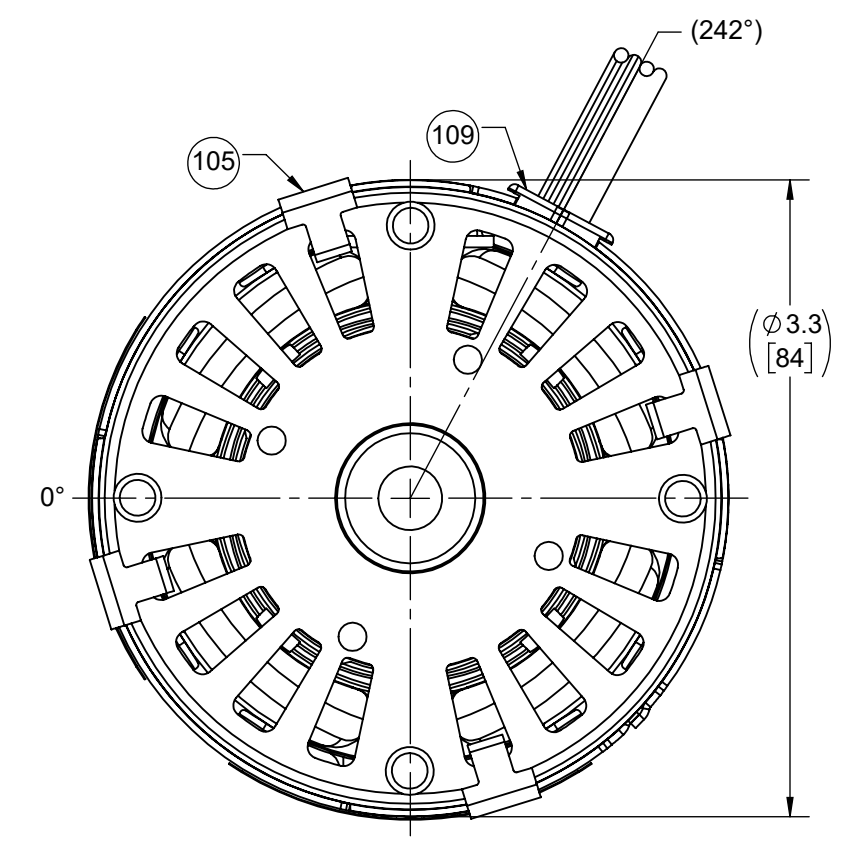
This is an uncontrolled document once printed or downloaded and is subject to change without notice. Date Created:08/24/2023

FRONT END



LEAD MATERIAL
18 GA. 105°C 4/64 INSUL.
THERMOPLASTIC, 2-COND.
PARALLEL, BLACK
10.00/8.00 [254.0/203.2]

BACK END



- NOTES:
1. 405 MOTORS MAXIMUM PER PALLET.
2. NO PACKAGING TAPE OVER CARTON LABEL.

SAFETY WARNING
This motor must be grounded in accordance with local or national electrical codes to prevent possible injury due to electrical shock

AVERTISSEMENT DE SÉCURITÉ
Ce moteur doit être fondée sur conformément à la réglementation locale ou national électrique codes pour prévenir d'éventuelles blessures en raison de choc électrique

00464071

FASCO™

Assembled in Mexico

No. 71635122 TYPE U63B1 T.P. AO LR6319
115 V 60/50 Hz Class B
2.1 A 1500/1300 RPM 1/20 HP
Model D1152 Max. Amb: 40°C

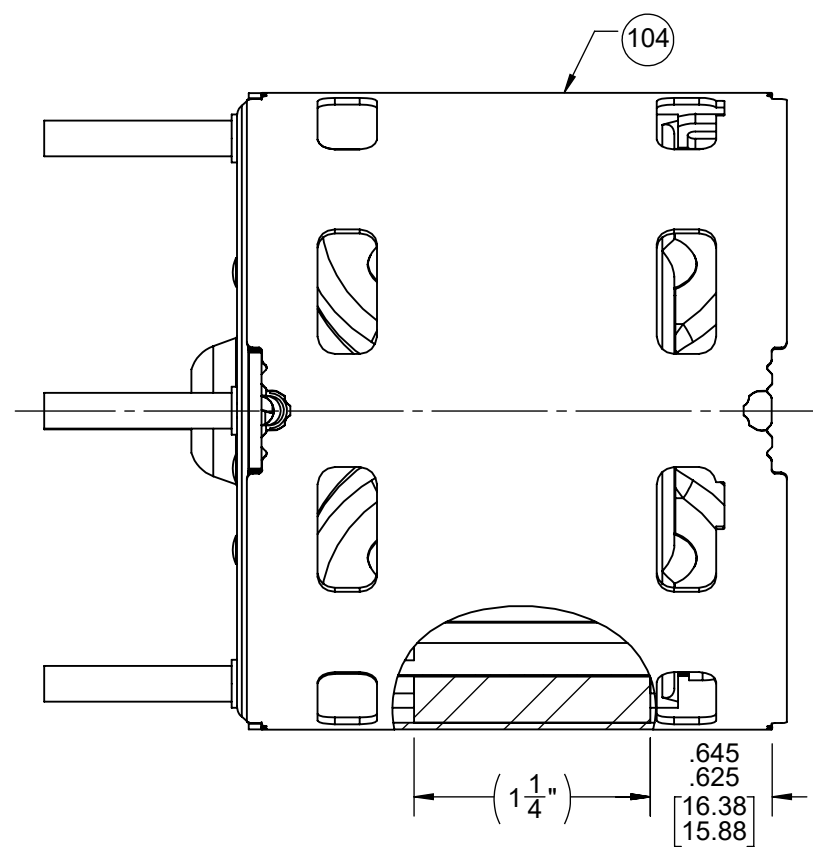
CUSTOMER:	FASCO DIST.	APPLICATION:									
CUSTOMER PN:	D1152	MOTOR WEIGHT:	3.19 LBS.								
		ENVIRONMENT:	DRY								
HORIZONTAL	UP	MOTOR TYPE			REFERENCE SAMPLE						
	DOWN	SHADED POLE									
	B 00	LA 63	FR 30	A V	S 05	C OH	E 5	B 3	A 0		
TYPICAL PERFORMANCE AT 115 VOLTS 60/50 HZ											
MOTOR SPEED	IDLE		LOADED				LOCKED		BREAK		
	RPM	AMP	WATT	IN OZ	RPM	AMP	WATT	IN OZ		AMP	WATT
60 Hz	1767	1.45	81	33.0	1550	1.68	123	12.0	2.45	179	39.5
50 Hz	1454	1.89	104	35.7	1300	1.96	141	16.5	2.85	222	50.0

DRAWING REVISION AL	REVISION BY SDM	REV DATE/© DATE 8/16/2023	TOLERANCES (EXCEPT AS NOTED): DEC. INCH mm ANGLE .X ±0.1 [±3] ±1° .XX ±0.01 [±0.3] .XXX ±0.005 [±0.13] .XXX ±0.0005 [±0.013]	DRAWN BY SDM		Regal Beloit America, Inc.
REQUEST NUMBER ECR-0227603	APPROVED BY KKM	DATE 8/16/2023	REMOVE BURRS & BREAK SHARP EDGES: .003/.015 [.08/.38] X 45° CORNER FILLETS: R.02 [.5] MACHINED SURFACES: .125/ mm 3.2/ INCH mm mm DIMENSIONS IN [BRACKETS] ARE FOR REFERENCE ONLY	DATE 10/19/2015		
REQUEST NUMBER DESCRIPTION ATTACH MODEL TO PRINT				APPROVED BY KSA	DESCRIPTION OUTLINE MOTOR ASSY	
COPYRIGHT (PER REVISION DATE) REGAL BELOIT AMERICA, INC. ALL RIGHTS RESERVED. PROPRIETARY AND CONFIDENTIAL INFORMATION - THIS DOCUMENT IS THE PROPERTY OF REGAL BELOIT AMERICA, INC. (OWNER) AND CONTAINS OWNERS PROPRIETARY INFORMATION. ANY PERSON, CORPORATION OR OTHER FIRM RECEIVING IT IS DEEMED, BY RECEIVING IT, TO AGREE THAT IT, AND/OR ANY PART OF IT, SHALL NOT BE DISCLOSED TO ANY PERSON, CORPORATION OR OTHER ENTITY, DUPLICATED, AND/OR USED, EXCEPT AS EXPRESSLY APPROVED IN WRITING IN ADVANCE BY OWNER. THIS DOCUMENT SHALL BE RETURNED TO OWNER UPON REQUEST. IT MAY BE SUBJECT TO CERTAIN RESTRICTIONS UNDER APPLICABLE EXPORT CONTROL LAWS AND REGULATIONS.				DATE 10/19/2015	MATERIAL	PROCESS/FINISH BLACK
THIRD ANGLE PROJECTION			SIZE C	DRAWING NUMBER 71635122	SHEET 1 OF 2	

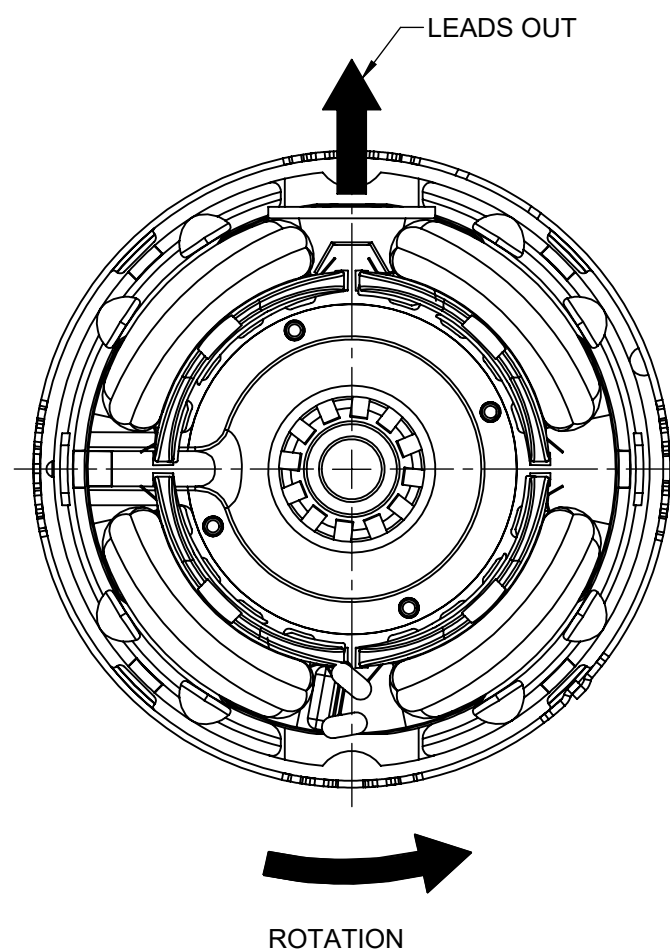
NOTES:

- 1. STAKE STATOR TO MAIN FRAME PER 88830264.
- 2. MAXIMUM TORQUE REQUIRED TO TURN MOTOR SHAFT IS 3/8 INCH-OUNCE.
- 3. MAKE-UP WASHERS ARE TO BE ADDED OR DELETED TO ACHIEVE REQUIRED ENDPLAY.
- 4. LEAD RIP MUST NOT EXTEND OUTSIDE OF MAIN FRAME.

FRONT END



BACK END



PACKING SPECIFICATIONS

- 1. PACK 1 PER CARTON, 45 PER LAYER, 405 MAX. PER PALLET, PER 88834200.
- 2. PLACE FOAM RING ON BACK END, FILLER TUBE OVER SHAFT EXTENSION, PLACE MOTOR IN CARTON, CLOSE FLAPS AND TAPE. PLACE CARTON ON SHAFT END OF CARTON.
- 3. PLACE (1) FLAT PAD ON PALLET, (1) BETWEEN EACH LAYER AND (1) ON TOP. PLACE CARTONS ON PALLET WITH LABELED END OUT AND VISIBLE FOR STORAGE. PLACE ALL INSPECTION STICKERS AND WRITING ON TOP FLAT PAD.
- 4. CARTON LABELS MUST ALL FACE ONE DIRECTION TOWARD THE OPEN END OF THE PALLET. SEE 88834408.

DRAWING REVISION AL	REVISION BY SDM	REV DATE/DATE 8/16/2023	TOLERANCES (EXCEPT AS NOTED): DEC. INCH mm ANGLE	DRAWN BY SDM	Regal Rexnord Regal Beloit America, Inc.
REQUEST NUMBER ECR-0227603	APPROVED BY KKM	DATE 8/16/2023	.X ±0.1 [±3] ±1° .XX ±0.01 [±0.3] .XXX ±0.005 [±0.13] .XXXX ±0.0005 [±0.013]	DATE 10/19/2015	
REQUEST NUMBER DESCRIPTION ATTACH MODEL TO PRINT			REMOVE BURRS & BREAK SHARP EDGES: .003/.015 [.08/.38] X 45° CORNER FILLETS: R.02 [.5] MACHINED SURFACES: .125/ mm 3.2 INCH/mm	APPROVED BY KSA	DESCRIPTION OUTLINE MOTOR ASSY
COPYRIGHT (PER REVISION DATE) REGAL BELOIT AMERICA, INC. ALL RIGHTS RESERVED. PROPRIETARY AND CONFIDENTIAL INFORMATION - THIS DOCUMENT IS THE PROPERTY OF REGAL BELOIT AMERICA, INC. ("OWNER") AND CONTAINS OWNER'S PROPRIETARY INFORMATION. ANY PERSON, CORPORATION OR OTHER FIRM RECEIVING IT IS DEEMED, BY RECEIVING IT, TO AGREE THAT IT, AND/OR ANY PART OF IT, SHALL NOT BE DISCLOSED TO ANY PERSON, CORPORATION OR OTHER ENTITY, DUPLICATED, AND/OR USED, EXCEPT AS EXPRESSLY APPROVED IN WRITING IN ADVANCE BY OWNER. THIS DOCUMENT SHALL BE RETURNED TO OWNER UPON REQUEST. IT MAY BE SUBJECT TO CERTAIN RESTRICTIONS UNDER APPLICABLE EXPORT CONTROL LAWS AND REGULATIONS.			DATE 10/19/2015	REFERENCE	MATERIAL
			mm DIMENSIONS IN [BRACKETS] ARE FOR REFERENCE ONLY	THIRD ANGLE PROJECTION	PROCESS/FINISH BLACK
				SIZE C	DRAWING NUMBER 71635122
					SHEET 2 OF 2