



**MINI-SPLIT CONDENSATE PUMPS**

Flowwatch® Design



GC1KFX2010



DE05LUA720

- Removes Condensate for Systems up to 42,000 BTUs
- 4 GPH
- 24 Foot Maximum Lift
- Vertical Suction: 6 Foot Maximum
- USA & Canada Agency Affiliations: ETL Listed 4000786/ CSA Certified C22.2 NO. 108/ Conforms to UL STD 778
- Noise Level: <21 dB @ 3.3' Distance
- Thermally Protected
- Alarm Level to Prevent Overflow
- Waterproof Connections Prevent Water Ingress
- Piston Pump Provides Long Life
- Optional Mounting Kit: #GC1KFX2010
- 2- Year Warranty

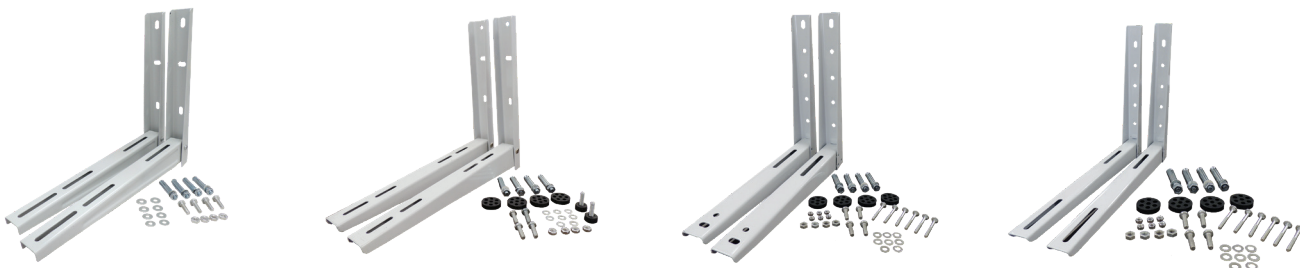
**FLOWWATCH® DESIGN MINI-SPLIT CONDENSATE PUMP WITH PLASTIC DUCT & INSTALLATION**

- Includes Mini FLOWWATCH® 2 Pump
- Includes Over 2 1/2 Feet of Plastic Duct
- Includes All Mounting Hardware
- Pre-mounted and Wired in Plastic Duct
- 2- Year Warranty

**SICCOM® Condensate Pump Line Up**

Part No.	115V	230V	N.O. Safety Switch	N.O. / N.C. Safety Switch	Pump Only	Pump w/ Plastic Duct
DE05LUA520	X		X		X	
DE05LUB100	X			X	X	
DE05LUB110		X		X	X	
DE05LUB120	X			X		X
DE05LUB130		X		X		

**MINI-SPLIT ACCESSORIES**



Universal mini split mounting brackets available in 7 sizes, with a capacity range of 240 to 440 lbs.

- Study Steel Construction
- Mounting Hardware Included

Part No.	Size	Max Lbs	BTU
MB100	14 1/2" x 17 3/4"	240	7,500 to 12,000 BTU
MB200	15 1/2" x 17 3/4"	240	7,500 to 12,000 BTU
MB300	16 1/2" x 21 5/8"	265	18,000 to 24,000 BTU
MB400	16 1/2" x 21 5/8"	240	12,000 to 24,000 BTU
MB500	19 1/4" x 21 5/8"	265	12,000 to 24,000 BTU
MB600	15 3/8" x 17"	330	7,500 to 18,000 BTU
MB700	18" x 18"	440	9,000 to 18,000 BTU