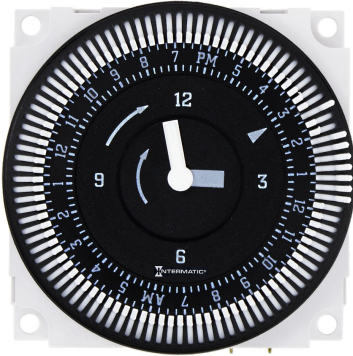


Graesslin Mechanical Time Switch - 24-Hour 120V Electromechanical Panel Mount Timer Module with Battery Backup, 15 Minute Intervals, 21A, SPDT

Item FM1QTUZ-120U



PRODUCT DESCRIPTION

The FM1 series timer modules are designed to be integrated inside of a machine control panel, circuit board, or other equipment. They are a simple and low cost alternative for applications that do not require more than 21 A or 2 HP, 240 VAC. The FM1 is designed for 24-hour or 7-day control or overriding a functional typical state of a heating, ventilation, refrigeration, lighting, security, or pump system. The FM1 series is ideal for 12, 24 VAC/VDC, 120 or 208/240VAC single-phase general applications.

FEATURES

- ▶ 21 A SPDT Switch
- ▶ Captive trippers with 15-minute intervals on 24-hour models and 2-hour intervals on 7-day models
- ▶ 72-hour carry-over battery backup on Q models
- ▶ Noise immune – ideal for robust applications
- ▶ Synchronous drive or quartz drive Q models with self-recharging battery backup
- ▶ True clock face, easy-to-set
- ▶ Available with or without override
- ▶ Compact size
- ▶ Clear plastic cover (DC-FME-A), sold separately
- ▶ Standalone or with indoor/outdoor enclosure, sold separately

APPLICATIONS

- ▶ Refrigeration Merchandiser
- ▶ Air Movement & Ventilation
- ▶ Aeration
- ▶ Septic Treatment
- ▶ Generator Exercising

TECHNICAL DATA

General	
Model Number	FM1QTUZ-120U
Description	24-Hour 120V Electromechanical Panel Mount Timer Module with Battery Backup, 15 Minute Intervals, 21A, SPDT
UPC Code	078275155688
Brand	Domestic Intermatic
Country of Origin (Intermatic)	MEXICO
Warranty Period	1-Year limited

Control Specifications	
Maximum Cycle Time	24 hrs
Timing Interval	15 min
Clock Drive Type	Quartz
Backup Type	72-hour Carry-over; Battery; Self-recharging
Battery Type	NiMh
Backup Protection Time	72 Hours
Battery Service Type	Rechargeable
Mechanism Type	Electromechanical
Has Captive Trippers	Yes
Has Real-time Clock Face	Yes

Application Compatibilities

Incandescent; Fluorescent; CFL; LED

Mechanical Specifications

Mounting Options Panel

Dimensions

Product Dimensions (H x W x D) in 2.359375 x 2.359375 x 1.25 in

Load Ratings

Motor Load Ratings Ranges 1 HP, 120 VAC, 50/60 Hz; 2 HP, 240 VAC, 50/60 Hz

Electrical Specifications

Maximum Power Consumption (VA) 1

Wiring Option 1/4" Quick connect terminals

Switch Type SPDT

Display and Format

Shortest switching time ON/OFF 15 minutes

Packaging

Shipping Weight (lbs) 0.249

Unit Carton Dimensions (H x W x L) in 2.25 x 3.25 x 3.25 in

Environmental Specifications

Operating Humidity 0 to 95%, Non-condensing

Temperature (operation) -4 °F to 131 °F / (-20 °C to 55 °C)

Operating Temperature with Battery Backup -4° F to 131° F (-20° C to 55° C)

Standards and Certifications

CSA Certification cCSAus

Other Certifications and Compatibilities cRUus; CE

UL File Number E10694

CSA File Number LR3730

California Proposition 65 None

RoHS Certification X