



Lineset Covers

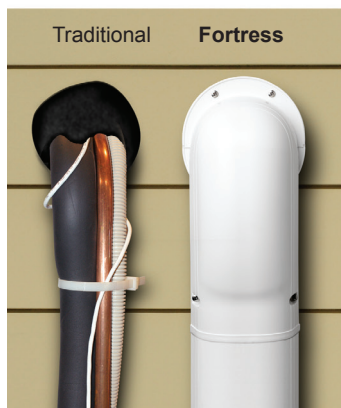
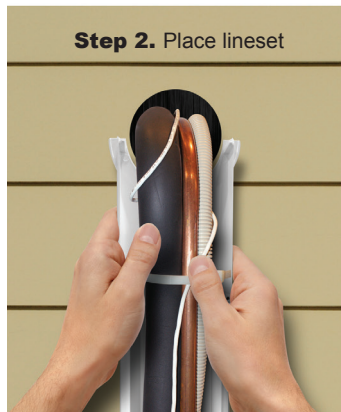
Professional grade ducting, protects and hides unsightly mini-split linesets in a snap!

Fortress: • Standard professional grade • Satin finish • More moderate price point

- 2 sizes.** Duct & fittings are available in both 3¹/₂" or 4¹/₂"
- 4 colors.** Choose white, ivory, brown or gray.
- 17 fittings.** Assures complete flexibility of installation.
- 8' lengths.** 6 lengths per box
- 6 fittings per box.** Efficient ordering and inventory.
- 1 year warranty.**



3-Step Installation



Application. Fortress® is perfect for minisplits, high velocity and conventional split air conditioning systems.

Strong. Fortress® ducting is extruded with our special formula rigid polyvinyl chloride, which is UV and weather resistant. The result is a long lasting quality product that will remain attractive and provide protection for many years.

Protective. Fortress® protects lineset, wiring and drain hose from weather, vandalism, pet and pest damage.

Easy to install. Fortress® installs quickly, and can be easily accessed for repairs or replacement of the lineset.

Stylish. Fortress® eliminates unsightly lineset used in a typical installation. Ducting is available in two lineset sizes and four neutral colors - white, ivory, brown and gray to compliment any residential or commercial building.

Paintable. Brush, spray or roller to match or compliment custom colors. Follow paint manufacturers recommendations for vinyl products.

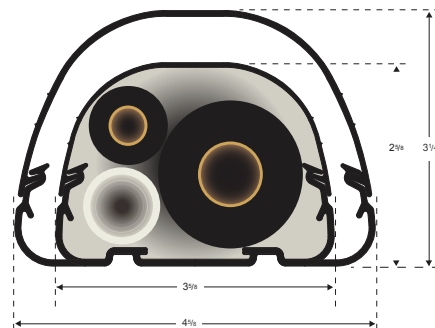
Technical Information

Weather Resistance

Weather resistant PVC,
UV stabilized & fire resistant.
Tested to over 2,000 hours.

Temperature Range

-4°F to 140°F




















Size Specifications

Choose duct size
LD92 or LD122

4 Colors for Residential & Commercial Applications



Ordering Information

	RS# (ref. #) White	RS# (ref. #) Ivory	RS# (ref. #) Brown	RS# (ref. #) Gray	Description	L	W	H
	84004 (LD-92-W)	84024 (LD-92-I)	84064 (LD-92-B)	84044 (LD-92-G)	LD92 3 1/2 Ducting	96"	3 5/8"	2 5/8"
	84104 (LD-122-W)	84124 (LD-122-I)	84164 (LD-122-B)	84144 (LD-122-G)	LD122 4 1/2 Ducting	96"	4 5/8"	3 1/4"
	84010 (LJ-92-W)	84030 (LJ-92-I)	84270 (LJ-92-B)	84250 (LJ-92-G)	LJ92 3 1/2 Coupler	2 5/8"	3 7/8"	2 3/4"
	84110 (LJ-122-W)	84130 (LJ-122-I)	84370 (LJ-122-B)	84350 (LJ-122-G)	LJ122 4 1/2 Coupler	2 5/8"	4 7/8"	3 1/2"
	84016 (LW-92-W)	84036 (LW-92-I)	84276 (LW-92-B)	84256 (LW-92-G)	LW92 3 1/2 Wall Inlet	9"	4 3/8"	3 1/8"
	84116 (LW-122-W)	84136 (LW-122-I)	84376 (LW-122-B)	84356 (LW-122-G)	LW122 4 1/2 Wall Inlet	9 3/4"	5 3/8"	4"
	84007 (LEN-92-W)	84027 (LEN-92-I)	84267 (LEN-92-B)	84247 (LEN-92-G)	LEN92 3 1/2 End Fitting	4 1/4"	3 7/8"	2 3/4"
	84107 (LEN-122-W)	84127 (LEN-122-I)	84367 (LEN-122-B)	84347 (LEN-122-G)	LEN122 4 1/2 End Fitting	4 1/4"	4 7/8"	3 1/2"
	84011 (LK-92-W)	84031 (LK-92-I)	84271 (LK-92-B)	84251 (LK-92-G)	LK92 3 1/2 90° Flat Ell	5 3/4"	5 3/4"	2 3/4"
	84111 (LK-122-W)	84131 (LK-122-I)	84371 (LK-122-B)	84351 (LK-122-G)	LK122 4 1/2 90° Flat Ell	6 1/4"	6 1/2"	3 1/2"
	84014 (LP-92-W)	84034 (LP-92-I)	84274 (LP-92-B)	84254 (LP-92-G)	LP92 3 1/2 Soffit Inlet	3 1/2"	6"	4 7/8"
	84114 (LP-122-W)	84134 (LP-122-I)	84374 (LP-122-B)	84354 (LP-122-G)	LP122 4 1/2 Soffit Inlet	3 1/2"	7"	5 1/2"
	84012 (LKF-92-W)	84032 (LKF-92-I)	84272 (LKF-92-B)	84252 (LKF-92-G)	LKF92 3 1/2 45° Flat Ell	4 7/8"	4 7/8"	2 3/4"
	84112 (LKF-122-W)	84132 (LKF-122-I)	84372 (LKF-122-B)	84352 (LKF-122-G)	LKF122 4 1/2 45° Flat Ell	6 1/2"	6 1/2"	3 1/2"
	84002 (LCI-92-W)	84022 (LCI-92-I)	84262 (LCI-92-B)	84242 (LCI-92-G)	LCI92 3 1/2 90° Inside Vertical Ell	5 1/4"	5 1/4"	2 3/4"
	84102 (LCI-122-W)	84122 (LCI-122-I)	84362 (LCI-122-B)	84342 (LCI-122-G)	LCI122 4 1/2 90° Inside Vertical Ell	5 1/4"	5 1/4"	3 1/2"
	84003 (LCO-92-W)	84023 (LCO-92-I)	84263 (LCO-92-B)	84243 (LCO-92-G)	LCO92 3 1/2 90° Outside Vertical Ell	4 1/2"	4 1/2"	2 3/4"
	84103 (LCO-122-W)	84123 (LCO-122-I)	84363 (LCO-122-B)	84343 (LCO-122-G)	LCO122 4 1/2 90° Outside Vertical Ell	5 1/4"	5 1/4"	3 1/2"
	84000 (LCFI-92-W)	84020 (LCFI-92-I)	84260 (LCFI-92-B)	84240 (LCFI-92-G)	LCFI92 3 1/2 45° Inside Vertical Ell	4 3/4"	3 7/8"	2 3/4"
	84100 (LCFI-122-W)	84120 (LCFI-122-I)	84360 (LCFI-122-B)	84340 (LCFI-122-G)	LCFI122 4 1/2 45° Inside Vertical Ell	6 1/4"	4 7/8"	3 1/2"
	84001 (LCFO-92-W)	84021 (LCFO-92-I)	84261 (LCFO-92-B)	84241 (LCFO-92-G)	LCFO92 3 1/2 45° Outside Vertical Ell	4 5/8"	3 7/8"	2 3/4"
	84101 (LCFO-122-W)	84121 (LCFO-122-I)	84361 (LCFO-122-B)	84341 (LCFO-122-G)	LCFO122 4 1/2 45° Outside Vertical Ell	5 1/4"	4 7/8"	3 1/2"
	84015 (LT-92-W)	84035 (LT-92-I)	84275 (LT-92-B)	84255 (LT-92-G)	LT92 3 1/2 Tee	7 3/4"	5 3/4"	2 3/4"
	84115 (LT-122-W)	84135 (LT-122-I)	84375 (LT-122-B)	84355 (LT-122-G)	LT122 4 1/2 Tee	7 3/4"	6 1/2"	3 1/2"
	84106 (LDR-12292-W)	84126 (LDR-12292-I)	84366 (LDR-12292-B)	84346 (LDR-12292-G)	LDR12292 4 1/2 - 3 1/2 Reducer	3"	4 7/8"	3 7/8"
	84013 (LKS-92-W)	84033 (LKS-92-I)	84273 (LKS-92-B)	84253 (LKS-92-G)	LKS92 3 1/2 90° Sweep Ell	13"	13"	2 3/4"
	84113 (LKS-122-W)	84133 (LKS-122-I)	84373 (LKS-122-B)	84353 (LKS-122-G)	LKS122 4 1/2 90° Sweep Ell	14"	14"	3 1/2"
	84008 (LF-92-W)	84028 (LF-92-I)	84268 (LF-92-B)	84248 (LF-92-G)	LF92 3 1/2 Flexible Ell	40"	3 1/2"	2 1/2"
	84108 (LF-122-W)	84128 (LF-122-I)	84368 (LF-122-B)	84348 (LF-122-G)	LF122 4 1/2 Flexible Ell	40"	4 1/2"	3 1/4"
	84009 (LFJ-92-W)	84029 (LFJ-92-I)	84269 (LFJ-92-B)	84249 (LFJ-92-G)	LFJ92 3 1/2 Flexible Adaptor	3 1/8"	3 7/8"	2 3/4"
	84109 (LFJ-122-W)	84129 (LFJ-122-I)	84369 (LFJ-122-B)	84349 (LFJ-122-G)	LFJ122 4 1/2 Flexible Adaptor	3 1/8"	4 7/8"	3 1/2"
	84017 (LWF-92-W)	84037 (LWF-92-I)	84277 (LWF-92-B)	84257 (LWF-92-G)	LWF92 3 1/2 Wall Flange	5"	6"	2 1/8"
	84117 (LWF-122-W)	84137 (LWF-122-I)	84377 (LWF-122-B)	84357 (LWF-122-G)	LWF122 4 1/2 Wall Flange	6 1/2"	7 3/4"	2 5/8"