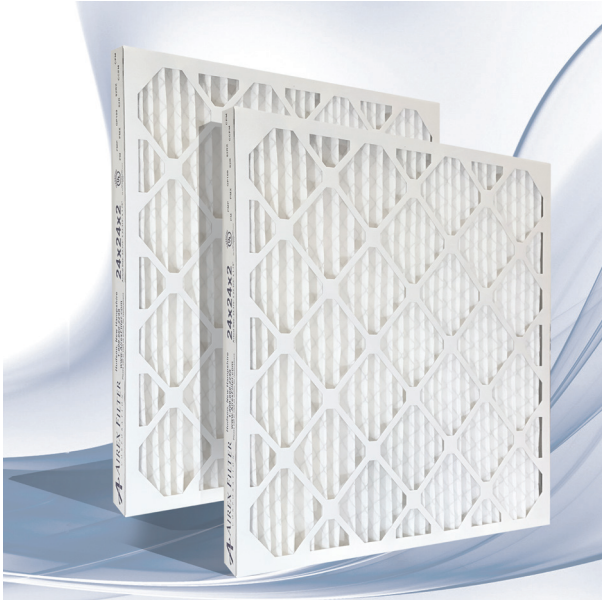


# Airex Filter Corporation GPDD100 DUAL DENIER MERV 13

## High Capacity Pleated Filter | 2" & 4"

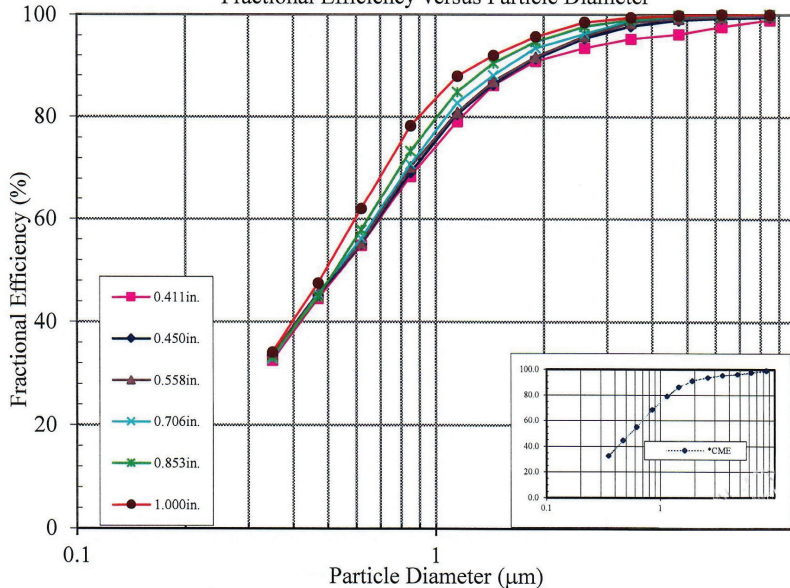


The Airex Dual Denier MERV 13 super capacity pleated filters are available in a wide range of sizes for all commercial, industrial and residential applications. The filter media is a dual bonded 100% synthetic, electrostatically charged media, designed to attract and hold airborne contaminants. This results in a higher efficient filter meeting LEED green building criteria for minimum efficiency. We added a maximum number of pleats in a two inch filter to get an IP of .27 @ 1476 and a .41 @ 1968 CFM just slightly higher than our regular GP100 MERV 13 media. The support members are an integral part of the frame and are bonded to each pleat on both sides to insure pleat spacing and stability. The filter pack is bonded to the inside periphery of the frame, thus eliminating the possibility of air bypass. The media support grid is available in expanded wire with an effective open area of not less than 93%. The wire grid is bonded between the two layers of media to eliminate the possibility of media oscillation and media pull away. UL Approved 217V as to flammability class 2 UL900.

### Performance Data

Filter	Pleats Per Linear Foot	Rated Initial Resistance (in. w.g.)		Recommended Final Resistance (in. w.g.)	ASHRAE 52.2 MERV	Continuous Operating Temperature Limits
		300 FPM	500 FPM			
2" GPDD100 MERV 13	15	.20	.41	1.0	13	180°F (82°C)
4" GPDD100 MERV 13	9	.14	.30	1.0	13	180°F (82°C)

Fractional Efficiency versus Particle Diameter



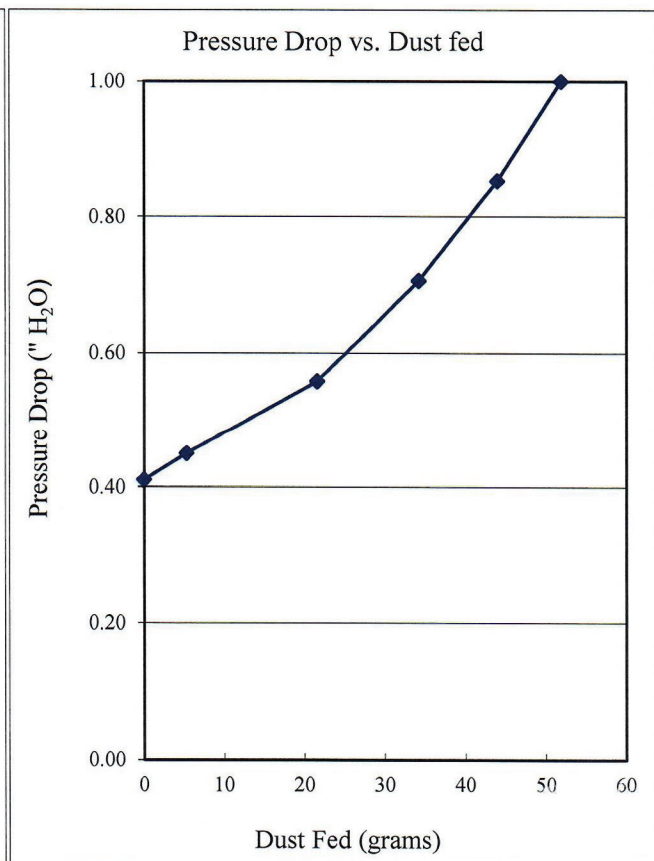
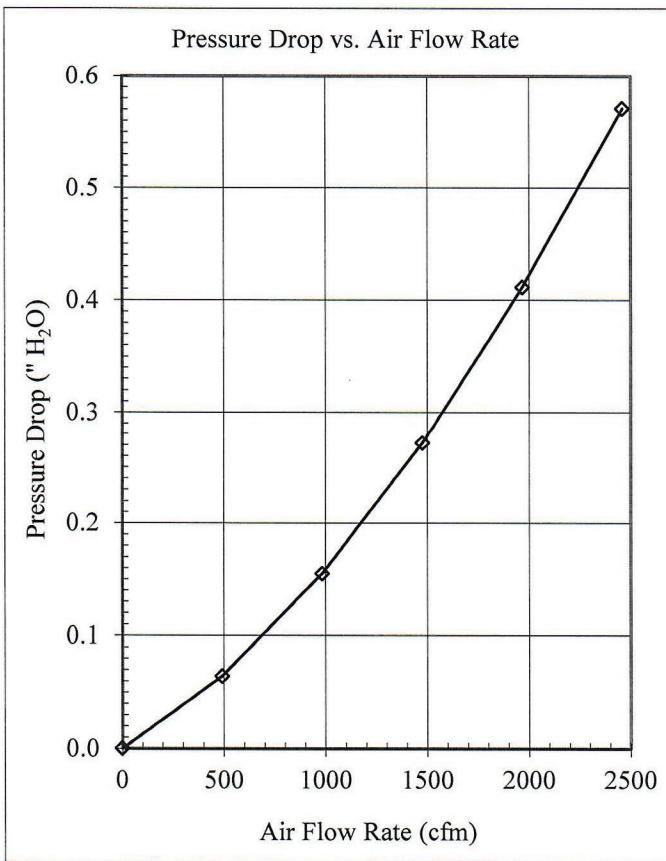
Nominal Sizes (Inches) (W x H x D)	Actual Sizes (Inches) (W x H x D)	Rated Airflow (SCFM)			Pleats Per Filter	Gross Media Area (sq. ft.)
		300 FPM	500 FPM	625 FPM		
10 x 20 x 2	9½ x 19½ x 1¾	400	700	850	12	6.1
12 x 20 x 2	11½ x 19½ x 1¾	500	850	1050	14	7.3
12 x 24 x 2	11¾ x 23¾ x 1¾	600	1000	1250	14	8.8
14 x 20 x 2	13½ x 19½ x 1¾	600	950	1150	17	8.5
14 x 25 x 2	13½ x 24½ x 1¾	750	1200	1500	17	10.6
15 x 20 x 2	14½ x 19½ x 1¾	650	1050	1300	18	9.1
16 x 20 x 2	15½ x 19½ x 1¾	650	1100	1400	19	9.7
16 x 24 x 2	15½ x 23½ x 1¾	800	1350	1650	19	11.2
16 x 25 x 2	15½ x 24½ x 1¾	850	1400	1750	19	12.2
18 x 20 x 2	17½ x 19½ x 1¾	750	1250	1500	22	10.9
18 x 24 x 2	17½ x 23½ x 1¾	900	1500	1875	22	13.1
18 x 25 x 2	17½ x 24½ x 1¾	950	1550	1950	22	13.7
20 x 20 x 2	19½ x 19½ x 1¾	850	1400	1750	24	12.2
20 x 24 x 2	19½ x 23½ x 1¾	1000	1650	2100	24	14.6
20 x 25 x 2	19½ x 24½ x 1¾	1050	1750	2150	24	15.2
24 x 24 x 2	23¾ x 23¾ x 1¾	1200	2000	2500	29	17.5
25 x 25 x 2	24½ x 24½ x 1¾	1300	2150	2700	31	19.0
12 x 24 x 4	11¾ x 23¾ x 3¾	600	1000	1250	9	11.3
16 x 20 x 4	15½ x 19½ x 3¾	650	1100	1400	12	12.5
16 x 25 x 4	15½ x 24½ x 3¾	850	1400	1750	12	15.6
18 x 24 x 4	17½ x 23½ x 3¾	900	1500	1875	14	17.5
20 x 20 x 4	19½ x 19½ x 3¾	850	1400	1750	15	15.6
20 x 24 x 4	19½ x 23½ x 3¾	1000	1650	2100	15	18.8
20 x 25 x 4	19½ x 24½ x 3¾	1050	1750	2150	15	19.6
24 x 24 x 4	23¾ x 23¾ x 3¾	1200	2000	2500	18	22.6
28 x 30 x 4	27½ x 29½ x 3¾	1750	2900	-	21	32.6

For more information, please visit our informational website [www.AirexFilter.com](http://www.AirexFilter.com)



Airex Filter Corporation **GPDD100**  
**DUAL DENIER MERV 13**  
 High Capacity Pleated Filter | 2" & 4"

Flow Rate CFM	Velocity FPM	dP (mm H <sub>2</sub> O)	Pressure drop ("H <sub>2</sub> O)	% of Rated Airflow	Dust fed	Pressure drop
0	0	0.00	0.000	0%	0.00	0.411
492	123	1.63	0.064	25%	5.30	0.450
984	246	3.93	0.155	50%	21.60	0.558
1476	369	6.90	0.272	75%	34.20	0.706
1968	492	10.45	0.411	100%	44.00	0.853
2460	615	14.50	0.571	125%	51.90	1.000



**Administrative Office  
Manufacturing Plant I**

17 Executive Drive  
Hudson, NH 03051  
800-660-2298

**Production Office  
Manufacturing Plant II**

19 Executive Drive  
Hudson, NH 03051  
800-660-2298

Underwriters Laboratories, Inc. (UL) is an agency that lists products they have tested against criteria deemed appropriate for public safety. The classification for HVAC air filters confirms that the filters will meet local and state requirements for most applications. UL 900 covers both washable and throwaway filters, used for the removal of dust and other airborne particles from mechanically circulated air in equipment and systems. This is in accordance with the Standards of the National Fire Protection Association (NFPA) for Installation of Air Conditioning and Ventilating Systems, of Other Than Residence Type, NFPA No. 90A, and for Installation of Residence Type Warm Air Heating and Air Conditioning Systems, NFPA No. 90B.

