

**URCO UNIVERSAL SERIES RELAY CAPACITOR OVERLOAD**



For Refrigeration Systems With or Without Run Capacitors. Maintain a High Efficiency System or Save an Old System.

- Replaces Relay, Capacitor and Overload
- Works on RSIR, CSIR, PSC & CSR Compressors
- “Push-On” Compressor Terminals and 1/4” Capacitor Terminals
- Designed for Modern High Efficiency Compressors
- Helps Older Compressors to Start and Run Cooler
- Easy Mount Clip for Quick Installation
- Easy to Read Instructions
- Prevents Low Voltage Starting Problems

Part No.	HP Rating	Volts	Cont. Running Amps
URCO210	1/3 to 1/2	120	13.3
URCO410	1/4 to 1/3	120	6.8
URCO810	1/12 to 1/5	120	4.05

**URCORC SERIES UNIVERSAL 4 ‘N 1 RELAY CAPACITOR, OVERLOAD & RUN CAPACITOR**

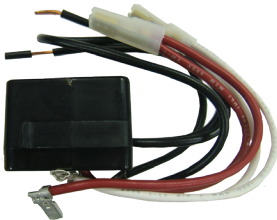


For Refrigeration Systems With or Without Run Capacitors. Maintain a High Efficiency System or Save an Old System.

- Same Features and Benefits of the Universal Series
- Adds a Closely Matched System Run Capacitor
- Replaces Current-Type Relays

Part No.	HP Rating	Run Cap. Size $\mu$ FD	Volts	Cont. Running Amps
URCO210RC	1/3 to 1/2	20	120	13.3
URCO410RC	1/4 to 1/3	15	120	6.8
URCO810RC	1/12 to 1/5	12.5	120	4.05

**URO SERIES UNIVERSAL RELAY OVERLOAD**



For Refrigeration Systems With or Without Run Capacitors. Maintain a High Efficiency System or Save an Old System.

- Replaces Relay and Overload
- Works on “RSIR”, “CSIR”, “PSC” & “CSR” Compressors
- Locked Rotor Protection, Eliminates Start Winding Overheating
- “Snap-On” Bracket for Easy Mounting
- Quick and Easy Installation
- Wiring Instructions on the Package
- Instructions on Adding a Start Capacitor And/Or Run Capacitor
- Wire Leads for Those Odd Installations, Wire Nuts Included

Part No.	HP Rating	Volts
URO41	1/4 to 1/3	120
URO81	1/12 to 1/5	120

**UPRO SERIES PUSH-ON RELAY**



For Refrigeration Systems With or Without Run Capacitors. Maintain a High Efficiency System or Save an Old System.

- Replaces Relay and Overload
- Works on RSIR, CSIR, PSC & CSR Compressors
- “Push-On” Relay Overload
- Quick Connect Push-On Terminals for Run And/Or Start Capacitor
- Wiring Instructions on the Package
- Instructions for Adding a Start Capacitor And/Or Run Capacitor

Part No.	HP Rating	Volts
UPRO21	1/3 to 1/2	120
UPRO41	1/4 to 1/3	120
UPRO81	1/12 to 1/5	120

**URSC SERIES RELAY START CAPACITOR**



For Refrigeration Systems With or Without Run Capacitors. Maintain a High Efficiency System or Save an Old System.

- Replaces Current-Type Relays
- Works on RSIR, CSIR, PSC & CSR Compressors
- Provides a Boost for Hard Start and Unbalanced Systems
- No Additional Wires Required

Part No.	HP Rating	Volts
URSC10	1/20 to 1/2	120
URSC20	1/20 to 1/2	240

**RCO SERIES 3 'N 1 RELAY, OVERLOAD & START CAPACITOR COMBINATION**



For Refrigeration Systems Without Run Capacitors.

- Replaces Relay, Overload and Provides a Boost for Hard Start and Unbalanced Systems
- Prevents Low Voltage Starting Problems

Part No.	Mounting	Start HP Rating	Volts	Cont. Running Amps	Trip in Current After 6-16 Sec Amps
RCO210	Quick Connect	1/2	120	13.3	12
RCO410	Quick Connect	1/4 to 1/3	120	6.8	22
RCO810	Quick Connect	1/12 to 1/5	120	4.05	12
RCO220	Quick Connect	1/2	240	7.5	22
RCO420	Quick Connect	1/4 to 1/3	240	4.05	12
RCO620	Quick Connect	1/6 to 1/5	240	1.66	6
RCO820	Quick Connect	1/12 to 1/8	240	1.66	6

**RO & PRO SERIES RELAY & OVERLOAD COMBINATIONS**



For Refrigeration Systems Without Run Capacitors.

- RO Series Features "Snap-On" Bracket
- PRO Series Installs on "Pin-Type" Terminal
- Locked Rotor Protection Eliminates Start Winding Overheating
- Can be Used With and Without Start Capacitor

Part No.	Mounting	HP Rating	Volts	Full Load	Trip in Current After 6-16 Sec Amps
RO41	Quick Connect	1/4 to 1/3	120	6.8	22
RO81	Quick Connect	1/12 to 1/5	120	4.05	12
PRO41	Push On	1/4 to 1/3	120	6.8	22
PRO81	Push On	1/12 to 1/5	120	4.05	12
RO42	Quick Connect	1/4 to 1/3	240	4.05	12
RO62	Quick Connect	1/6 to 1/5	240	1.66	6
RO82	Quick Connect	1/12 to 1/8	240	1.66	6
PRO42	Push-On	1/4 to 1/3	240	4.05	12
PRO62	Push-On	1/6 to 1/5	240	1.66	6

**ICG & PO SERIES RELAYS**



For Refrigeration Systems Without Run Capacitors.

- ICG Series Features a "Snap-On" Bracket
- PO Series Installs on Compressors with "Pin-Type" Terminals
- Fastest Cool Down Time of Any Solid State Relays
- Can be Used With or Without Start Capacitor

Part No.	Mounting	HP Rating	Volts
ICG1	Quick Connect	1/12 to 1/2	120
ICG-220	Quick Connect	1/12 to 1/2	240
PO115	Push-On	1/12 to 1/2	120
PO230	Push-On	1/12 to 1/2	240

**SS410 SUPER START RELAY OVERLOAD COMBINATION**



For Refrigeration Systems Without Run Capacitors.

- Equipped with an Electro-Mechanical Relay, Locked Rotor Protector and a 243-292  $\mu$ F Start Capacitor
- Increases Torque to its Maximum Capacity

Part No.	Mounting	HP Rating	Volts
SS410	Quick Connect	1/4 to 1/3	120

**USR UNIVERSAL STARTING RELAY**



- Pre-Wire Electronic Potential Relay Hard Start Kit
- Pre-wired for easy installation
- Voltage sensing
- Instant re-start
- Can be used on PSC and CSIR type compressors
- 330 VAC capacitor
- UL® Recognized

Specifications	
Capacitor size ( $\mu$ F)	108-130
Recommended Range (hp)	1/2 - 10 hp
Operating Voltage VAC	110-270

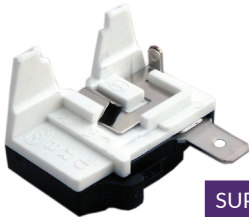
**IC100 & IC102**



For Refrigeration Systems With or Without Run Capacitors.

- 120 Volt PTC Relay Replaces Current Relays and Solid State Relays From 1/20 to 1/3 HP
- Can Be Used in Any Position
- Used on Over 10,000 Models

**OL SERIES DIRECT REPLACEMENT OVERLOADS**



- Direct Replacements for Numerous OEM's
- Use OL Series Overloads with IC Series, PO Series and UR115

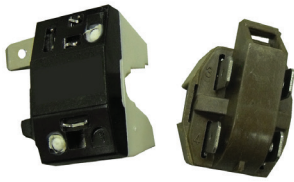
SUPCO® Part No.	Relay	Overload	HP Rating	Volts	# of Terminals	Compressor Connections	Compatible	Replaces
IC100	*	----	1/12 to 1/3	120	2	2	YES	2165943, WR7X194
IC102	*	----	1/2 to 1/3	120	4	2	YES	5303007173, WR7X240
OL1	----	*	1/5 to 1/4	120/240	1	1	----	5303299560, 216100110
OL2	----	*	1/4 to 1/3+	120/240	1	1	----	5303270406, WR8X122
OL3	----	*	1/6 to 1/5	120/240	1	1	----	5303276514
OL4	----	*	1/4 to 1/3	120/240	1	1	----	5303206885, 2154945

**OLK1786 COMPRESSOR START DEVICE KIT**



Relay and Overload Kit can Replace 8201786, also used on Kenmore®, Whirlpool®, KitchenAid® and Roper® Refrigerators, Plus Other Brands Manufactured by Whirlpool®.

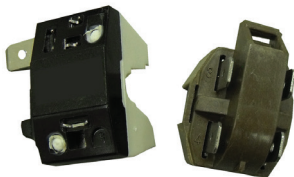
**OLK7535 OVERLOAD RELAY KIT SIDE X SIDE**



OLK Series Relay & Overload Kit Can Be Used as a Direct Replacement on Several Whirlpool®, Roper®, Estate®, KitchenAid®, Maytag® and Magic Chef® Models.

- Can Be Used With or Without a Run Capacitor
- Energy Saving Plastic Construction
- Domestic Refrigerators and Freezers
- 120 VAC Applications
- Replaces Over 2,300 Models

**OLK7913 OVERLOAD RELAY**



- Direct Replacement for 2,400 Whirlpool® Models
- Universal Replacement on Over 10,000 Models, as a Universal Relay Overload Kit
- Can Be Used With or Without a Capacitor
- 120 VAC

**OLK1799 COMPRESSOR START DEVICE KIT**



The start relay briefly boosts the compressor, and then shuts off as soon as the motor gets up to speed and the Overload provides added protection for the compressor.

- Replaces 8201799

**EC10 COMPRESSOR LEAD KIT**



Kit Includes Three Leads:

- Three - 23", 10 AWG Wires
- Flag Female Compressor Terminal (.250 tab)
- Waterproof Butt Connector (12-10 Wire Range)
- Sandpaper

Part No.	Description	UOM	Order Multiple
EC10	Kit with 23" Wire	EA	1

**UNIVERSAL DEFROST TIMERS**



- Universal Replacement
- Electronic Circuitry
- Adjustable Defrost Frequency 4 to 12 Hours
- Adjustable Defrost 10 to 35 Minutes
- Cycle Advance Button
- Standard Size and Mounting to Fit Most Applications
- No Ground Wire
- Quiet Operation and Durability
- Standard Terminal Configuration to Accommodate Most Connections
- Dust Proof Case
- Temperature Range 32°F to 135°F (0°C to 57°C)
- Humidity Range 10-95% Non-Condensing



Part No.	Description	Voltage	Max Compressor Rating	Max Resistive Load (Amps)
UET120	Universal Electronic Timer	120 VAC	1/2 HP	10
UET240	Universal Electronic Timer	120 VAC	1/2 HP	5
EDT10	Electronic Defrost Timer	115 VAC	1/3 HP	10
EDT11	Electronic Defrost Timer	115 VAC	3/4 HP	20
EDT20	Electronic Defrost Timer	208/240 VAC	3/4 HP	5