

EVAPORATOR COIL  
**PRODUCT GUIDE**




NEW FOR 2024

**FLEX**  **COIL**





<b>04</b>	<b>WHY ADP</b>	<b>16</b>	<b>PLENUM COIL - PL SERIES</b>
		16	Description
<b>05</b>	<b>THE ADP ADVANTAGE</b>	17	Nomenclature
<b>06</b>	<b>EVAPORATOR COIL APPLICATION</b>	<b>18</b>	<b>HORIZONTAL SIDE CONNECTION HD SERIES</b>
<b>07</b>	<b>FLEXCOIL</b> 	18	Description
		19	Nomenclature
<b>08</b>	<b>EVAPORATOR COIL PRODUCT OFFERING</b>	<b>20</b>	<b>HORIZONTAL SLAB HH SERIES</b>
<b>09</b>	<b>EVAPORATOR COIL PRODUCT COMPARISON</b>	20	Description
		21	Nomenclature
<b>10</b>	<b>MULTI-POSITION - HE SERIES</b>	<b>22</b>	<b>MANUFACTURED HOME M SERIES</b>
10	Description	22	Description
11	Nomenclature	23	Nomenclature
<b>12</b>	<b>DEDICATED DOWNFLOW</b>	<b>24</b>	<b>SERVICE COILS</b>
12	Description	24	Description
13	Nomenclature	25	Nomenclature
<b>14</b>	<b>HORIZONTAL TOP CONNECTION - V SERIES</b>	<b>26</b>	<b>NOTES</b>
14	Description		
15	Nomenclature		



## WHY ADP?

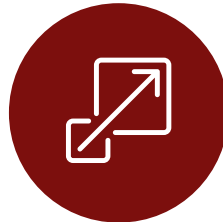
Advanced Distributor Products (ADP) started with a vision to produce the best evaporator coils in the country. In 1992, ADP began production in Grenada, Mississippi, and started developing innovative products that are fully supported by a research and development laboratory, which includes areas for testing, assembling, and designing future products.

Today, ADP offers a wide range of premier HVAC products with exclusive design advantages. We pride ourselves on our quality, flexibility, and solutions. We design our products to fit any application and simplify installation. And we're always open to new partnerships with businesses and the communities we serve.



### QUALITY

- Leading US manufacturer of evaporator coils and air handlers
- Built to the highest quality standards
- Microban® antimicrobial technology
- Advanced performance testing simulation software



### FLEXIBILITY

- Broadest product line in the industry – thousands of variations available
- Products designed to match perfectly with any system
- Personalized programs for distributor partners
- Custom product strategies to meet local needs



### SOLUTIONS

- Short lead times
- Low warranty rates with simple claim process
- Insights from industry experts
- Focused on distributor and dealer success
- Quick and easy installation in the field

# THE ADP ADVANTAGE

There's a reason ADP is the #1 producer of evaporator coils in the USA. Our coils are designed to match perfectly with any system, excelling in appearance and performance. And our coil line can accommodate any application need.

## ALL ADP EVAPORATOR COILS OFFER



Innovative and efficient designs that maintain a minimal footprint



Installation flexibility and efficiency



Increased system performance



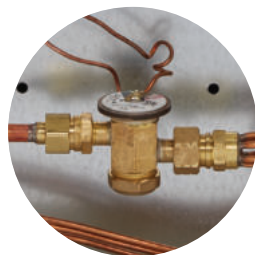
Available 10-year extended warranty with registration



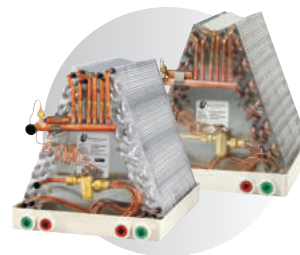
Out-of-the-box installation



Industry-exclusive Microban® anti-microbial product protection on every Healthy Solutions® coil



Factory installed TXV's with bolt on connections



Both copper and aluminum coils available



## EVAPORATOR COIL APPLICATION

An evaporator coil plays a crucial role in the operation of an air conditioner or heat pump by gently drawing warmth from the air within the home. It's positioned within the air handler or connected to the furnace.

Nestled within the blower compartment or air handler, the evaporator coil serves as a reservoir for the cooled refrigerant that the compressor sends its way. As the blower fan guides air over the coil, the refrigerant's chilly temperature effectively extracts heat from your indoor air, leaving you with a more comfortable environment. Subsequently, the refrigerant, now carrying the warmth it collected, embarks on a journey to the outdoor condenser coil. In the case of a heat pump, this process takes on a role reversal during winter. Here, the evaporator coil releases heat from the refrigerant into your home, counteracting the chill instead of sending it outside.

In this way, the evaporator coil silently contributes to the coziness of your living spaces while also being versatile enough to adapt to seasonal variations in temperature.





# FLEX COIL

ONE COIL. ANY REFRIGERANT. ONLY FROM ADP

## WHAT IS FLEXCOIL?

FlexCoil is exactly what the name implies, one coil, any refrigerant, offering the flexibility you need for 2024 and beyond. ADP's FlexCoil is designed to help HVAC distributors and dealers succeed during this year's refrigerant transition.

### WHAT MAKES FLEXCOIL THE RIGHT CHOICE?



#### Flexibility for distributors

- Future-proofs inventory while maintaining backward compatibility
- Minimizes inventory obsolescence risk



#### Easy installation for dealers

- Provides a full line of coils and air handlers certified for both refrigerant types
- Field or factory-installed Refrigerant Detection System (RDS)
  - Single RDS with dual-calibrated sensor for both R-32 and R-454B
  - Field RDS offers one kit with everything needed to make an easy refrigerant change
- All ADP FlexCoil products come with the sensor bracket preinstalled in the approved location and have mechanical fit connections to install or change the metering device, such as a TXV

### HOW DOES FLEXCOIL SIMPLIFY THE TRANSITION TO LOW-GWP REFRIGERANTS?

Discuss your transition with your ADP sales agency to develop a customer product strategy for 2024:

#### EARLY 2024



Factory Configured for R-410A

#### MID-2024



Field Configured for low-GWP with TXV & RDS kit

#### LATE 2024



Factory Configured for low-GWP

Factory or field configurable for R-22, R-410A, R-454B, or R-32

### WHEN WILL FLEXCOIL BE AVAILABLE?

FlexCoil options will begin to be available in Q1 2024, with all ADP coil and air handler unit lines transitioning to FlexCoil by mid-year.

Factory Refrigerant	Factory RDS
R-410A	No
R-32	Yes
R-32	No
R-454B	Yes
R-454B	No

Field TXVs	Field RDS
R-410A	Dual: R-32 & R-454B
R-32	
R-454B	



Scan to learn more about ADP's FlexCoil



# EVAPORATOR COIL PRODUCT OFFERING

## Multi-Position & Dedicated Downflow

HE & Dedicated Downflow Series

Lower heights and variable widths for a perfect furnace fit

FLEX  COIL

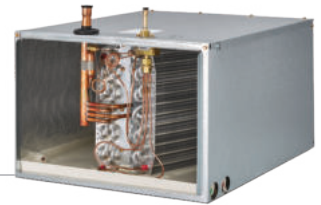


## Horizontal Top Connection

V Series

Dedicated horizontal coils offer strategic attic solutions over standard MP coils

FLEX  COIL



## Horizontal Side Connection

HD Series

Dedicated horizontal coils offering the perfection solution for crawl spaces

FLEX  COIL



## Plenum Coil

PL Series

Dedicated horizontal coil with an integrated plenum for fast installation

FLEX  COIL



## Horizontal Slab

HH Series

Dedicated horizontal slab coils great for replacement of legacy applications

FLEX  COIL



## Manufactured Housing

M Series

Mobile home applications with sized out down-turned headers for easy line brazing

FLEX  COIL



## Service Coils

SC Series

Service coils offering the perfect replacement for 8-12 SEER coils

FLEX  COIL







# EVAPORATOR COIL PRODUCT COMPARISON



Series	HE Series	Downflow	V Series	HD Series	PL Series	M Series	HH Series
DESCRIPTION	Multi-Position	Dedicated Downflow	Horizontal Coil	Horizontal Coil	Horizontal Coil	Manufactured House	Horizontal Coil
FLEX  COIL							
R-410A	✓	✓	✓	✓	✓	✓	✓
R-32	✓	✓	✓	✓	✓	✓	✓
R-454B	✓	✓	✓	✓	✓	✓	✓
WARRANTY							
Extended Warranty Available	✓	✓	✓	✓	✓	✓	✓
COIL FEATURES							
Aluminum Coil	✓	✓	✓		✓		
Copper Coil	✓	✓	✓	✓		✓	✓
APPLICATION							
Vertical Upflow/Downflow	✓	✓ Downflow				✓	
Horizontal Right/Left	✓		✓	✓	✓		✓
AC/HP	✓	✓	✓	✓	✓	✓	✓
Cased	✓	✓	✓	✓	✓		✓
Uncased	✓					✓	
CABINET							
Embossed	✓	✓	✓	✓	✓		✓
Painted	✓		✓				
DRAIN PAN							
Microban® Antimicrobial	✓	✓	✓	✓	✓		✓
UV Resistant	✓	✓	✓	✓	✓		✓
Sloped Design	✓	✓	✓		✓	✓	
METERING (All products are R-22/ R-410A convertible)							
Piston	✓	✓	✓	✓	✓	✓	✓
TXV	✓	✓	✓	✓	✓	✓	✓

✓ Available factory installed

**5-YEAR**  
LIMITED PARTS  
WARRANTY STANDARD

AVAILABLE  
**10-YEAR**  
EXTENDED WARRANTY  
WITH REGISTRATION

SCAN THIS CODE TO REGISTER  
FOR OUR 10-YEAR WARRANTY.





# MULTI-POSITION - HE SERIES

FLEX  COIL

Scan the QR code  
to learn more



---

Lower heights and variable widths for a perfect furnace fit

---

Cased, uncased, multi-position and upflow/downflow configurations

---

Built-in plenum flanges with rounded corners for fast and safe installation

---

Front panel with only four screw access and non-captive refrigerant lines for fast and easy coil access

---

Available in copper or aluminum

---

Painted cabinet options for furnace color coordination

## Improved Air Quality

Microbes can double every 20 minutes on an untreated surface!



Standard plastic pan with visible mold



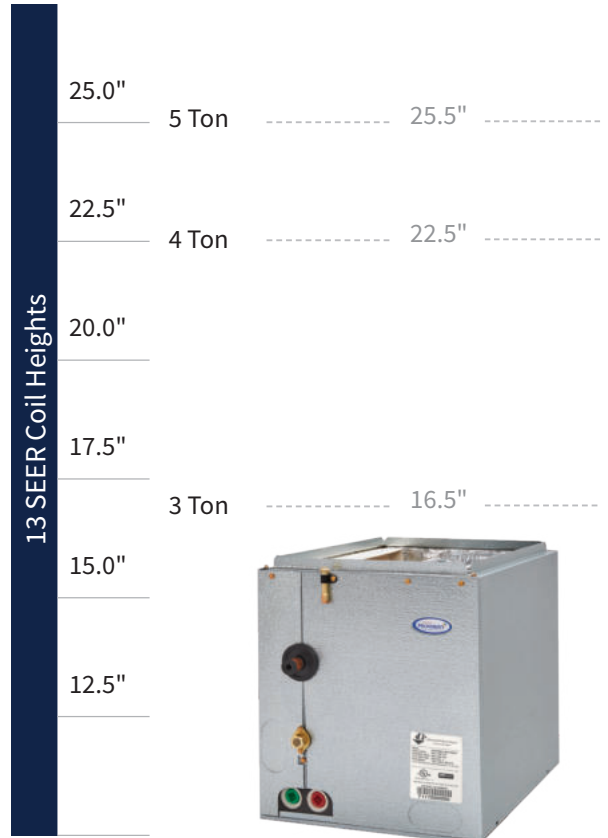
Plastic pan with Microban<sup>®</sup> antimicrobial additive

Mold is part of our environment and there are no practical ways to completely eliminate mold spores.

The best defense against mold in a home is to prevent it from taking hold through moisture control and the use of mold resistant building materials.

## Lower Height

ADP provides space saving opportunities and a perfect fit with your furnace!



## Nomenclature

H	G30	9	24	D	145	B	12	05	AP	N
Cabinet Color	Slab No.	Refrigerant Type & Metering Device (Field Configurable)	Nominal MBTUH	Cabinet Depth	Width	Cabinet Upper Notch	Cabinet Height	Configuration	Access Port	Refrigerant Detection System (Field Configurable)
<b>H</b> = Embossed <b>A</b> = Armstrong <b>G</b> = ICP <b>J</b> = Goodman/Amana <b>N</b> = Nordyne <b>P</b> = Carrier/Bryant/Payne <b>R</b> = Rheem/Ruud <b>T</b> = Trane/American Standard <b>Y</b> = York/Luxaire Coleman	<b>E &amp; A</b> = Copper slab <b>G</b> = Aluminum slab	<b>1</b> = Piston <sup>1</sup> (R-410A) <b>7</b> = R-410A Bleed HP-A/C TXV <b>9</b> = R-410A Non-bleed HP-A/C TXV <b>A</b> = R454B Non-bleed HP-A/C TXV <b>B</b> = R32 Non-bleed HP-A/C TXV		<b>A</b> = Uncased <b>C</b> = 20.5" <sup>[2]</sup> <b>D</b> = 21.0" <b>E</b> = 21.5"	<b>Cased</b> <b>140</b> = 14.0" <b>142</b> = 14.25" <b>145</b> = 14.5" <b>175</b> = 17.5" <b>210</b> = 21.0" <b>245</b> = 24.5" <b>Uncased</b> <b>130</b> = 13.0" <b>140</b> = 14.0" <b>155</b> = 15.5" <b>170</b> = 17.0" <b>200</b> = 20.0" <b>205</b> = 20.5"	<b>A</b> = Uncased <b>B</b> = 0.75" (Standard)	<b>00</b> = Uncased <b>12</b> = 12.5" <b>16</b> = 16.5" <b>18</b> = 18.5" (up to 31.5")	<b>00</b> = Right-hand uncased <b>01</b> = Right-hand cased <b>04</b> = Left-hand uncased <b>05</b> = Left-hand cased <b>20</b> = Right-hand cased multi-position <b>22</b> = Left-hand cased multi-position	<b>AP</b> = TXV Access Port	<b>R</b> = Included (Factory Installed) <b>N</b> = Not Included (Field Installed)

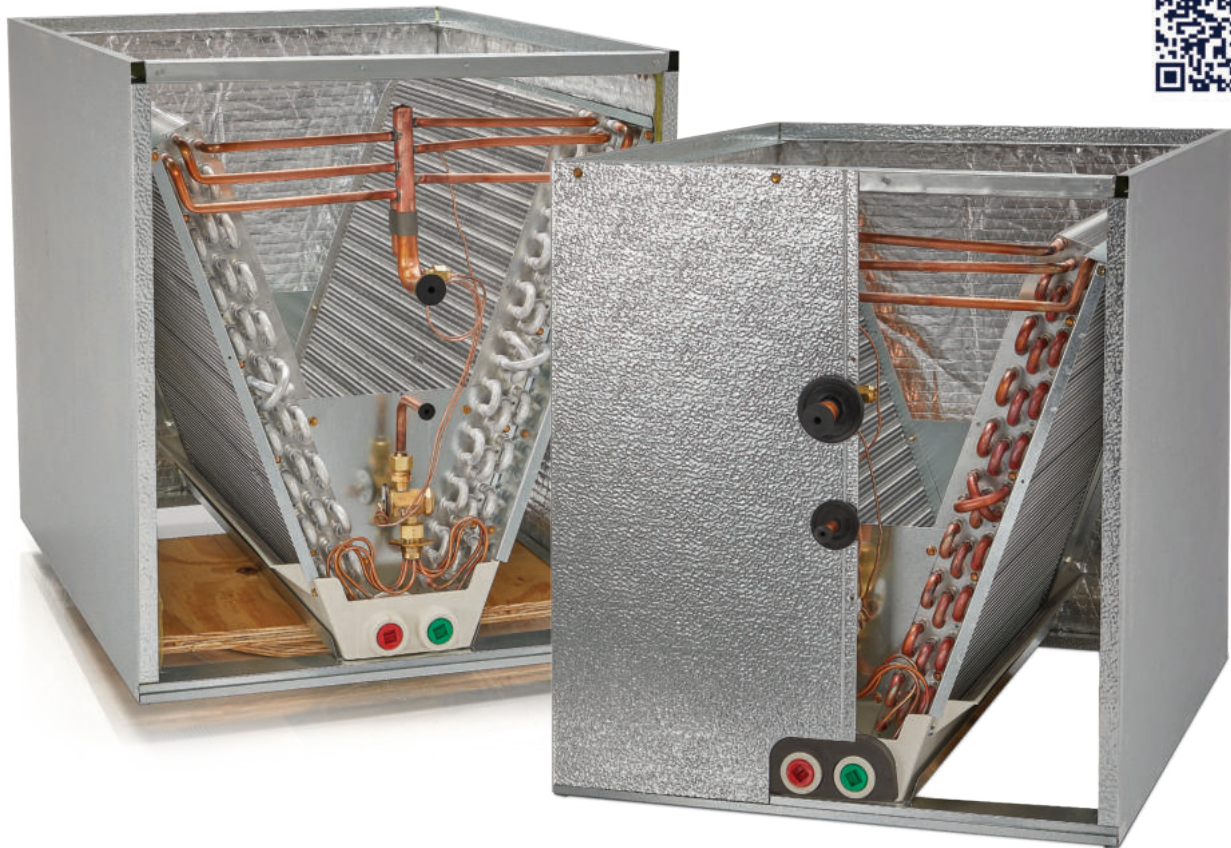
<sup>1</sup>Piston will always be sized to match the nominal BTU rating of the coil. See Spec Guide for additional nomenclature details.



# DEDICATED DOWNFLOW

FLEX  COIL

Scan the QR code  
to learn more



---

Short height to fit constrained spaces

---

Fits furnace with no additional support needed

---

Better air flow for higher performance versus N-coil

---

Out-of-the-box reliable downflow solution and no kit needed

---

Front panel with only six screws for fast and easy coil access; non-captive refrigerant lines

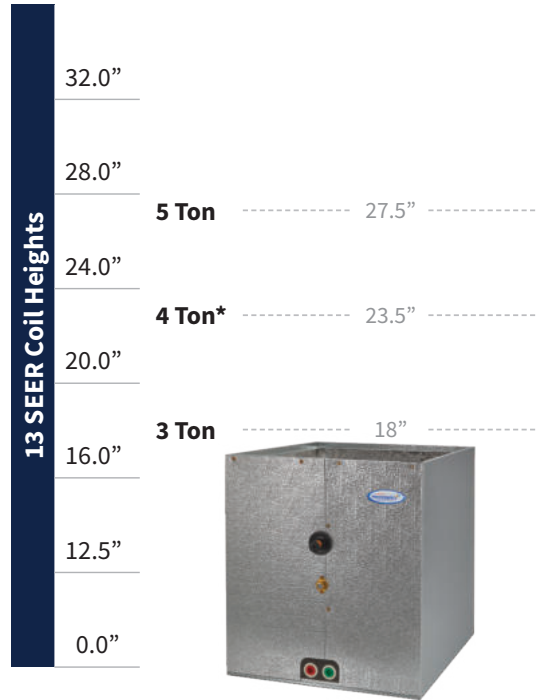
## Perfect Fit

- Full depth cabinet for a sturdy installation
- Perfect width fit for a cleaner design
- Braced cabinet for added strength



## Short Height

- Fits in height constrained spaces
- Space savings opportunities



\* See spec guide for available models

## Nomenclature

A	24	VAC	9	X	R	17	D	N
Series	Nominal MBTUH	Slab Number	Refrigerant Type & Metering Device (Field Configurable)	Embossed	Cabinet Depth	Cabinet Width	Configuration	Refrigerant Detection System (Field Configurable)
A = Vertical		VAC, VBC. VCC, etc. = Copper Slab VAA, VBA. VCA, etc. = Aluminum Slab	1 = Piston <sup>1</sup> 7 = R-410A Bleed HP-A/C TXV 9 = R-410A Non-bleed HP-A/C TXV A = R454B Non-bleed HP-A/C TXV B = R32 Non-bleed HP-A/C TXV	X = Embossed	R = 26.5"	14 = 14.5" 17 = 17.5" 21 = 21.0" 24 = 24.5"	D = Downflow	R = Included (Factory Installed) N = Not Included (Field Installed)

<sup>1</sup>Piston will always be sized to match the nominal BTU rating of the coil. See Spec Guide for additional nomenclature details.



# HORIZONTAL TOP CONNECTION - V SERIES



Scan the QR code  
to learn more



---

Dedicated horizontal coils offer strategic attic solutions over standard MP coils

---

Top refrigerant connections eliminating counter flow and line re-routing

---

Dual condensate drains on each side for additional installation flexibility

---

Top panel with only four screws for fast and easy coil access

---

Available in copper or aluminum

---

Painted cabinet options for furnace color coordination

## Improved Air Quality

Microbes can double every 20 minutes on an untreated surface!



Standard plastic pan with visible mold



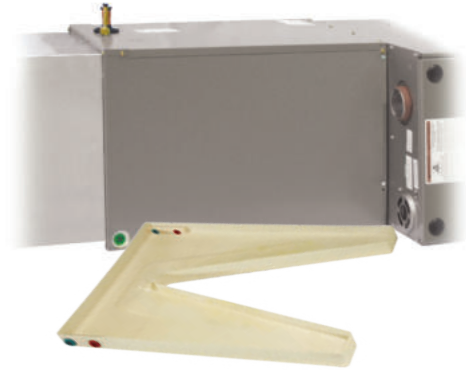
Plastic pan with Microban® antimicrobial additive

Mold is part of our environment and there are no practical ways to completely eliminate mold spores.

The best defense against mold in a home is to prevent it from taking hold through moisture control and the use of mold resistant building materials.

## Perfect Attic Solution

Dedicated horizontal coils offer a quality advantage over standard multi-position coils!



### Perfect Furnace Fit

Coil height matches furnace width, no adapter required

### 5 Ton Attic Access

21" solution easily passes through 22" attic opening

### Top Refrigerant Connections

Eliminates counter flow and line re-routing

## Nomenclature

V	24	H	145	D12	9	N
Cabinet Color	Nominal MBTUH	Coil Type	Cabinet Height	Slab Number	Refrigerant Type & Metering Device (Field Configurable)	Refrigerant Detection System (Field Configurable)
<b>V</b> = Embossed <b>A</b> = Armstrong <b>G</b> = ICP <b>J</b> = Goodman/Amana <b>N</b> = Nordyne <b>P</b> = Carrier/Bryant/Payne <b>R</b> = Rheem/Ruud <b>T</b> = Trane/American Standard <b>Y</b> = York/Luxaire/Coleman		<b>H</b> = Horizontal A-Coil	<b>145</b> = 14.5" <b>175</b> = 17.5" <b>210</b> = 21.0" <b>245</b> = 24.5" <b>252</b> = 25.25"	<b>D</b> = Copper Slab <b>P</b> = Aluminum Slab	<b>1</b> = Piston <sup>1</sup> <b>7</b> = R-410A Bleed HP-A/C TXV <b>9</b> = R-410A Non-bleed HP-A/C TXV <b>A</b> = R454B Non-bleed HP-A/C TXV <b>B</b> = R32 Non-bleed HP-A/C TXV	<b>R</b> = Included (Factory Installed) <b>N</b> = Not Included (Field Installed)

<sup>1</sup>Piston will always be sized to match the nominal BTU rating of the coil. See Spec Guide for additional nomenclature details.



# PLENUM COIL - PL SERIES

FLEX  COIL

Scan the QR code  
to learn more



---

Dedicated horizontal coil with Integrated plenum for fast installation

---

Built-in handle allows for easy lifting through tight spaces, such as an attic

---

Top refrigerant connections and dual condensate drains for installation flexibility

---

Top panel with only four screw access and UV light knockouts for installation flexibility

---

Pilot holes for fast secondary drain pan attachment



## Improved Air Quality

Microbes can double every 20 minutes on an untreated surface!



Standard plastic pan with visible mold



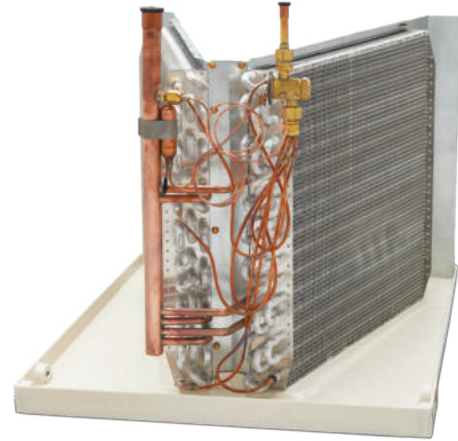
Plastic pan with Microban® antimicrobial additive

Mold is part of our environment and there are no practical ways to completely eliminate mold spores.

The best defense against mold in a home is to prevent it from taking hold through moisture control and the use of mold resistant building materials.

## All-in-One Solution

ADP provides a light weight plenum coil solution with premier features and benefits!



### Mobility

Light weight aluminum evaporator coils with aluminum header plates

### Attic Access

Built-in handle allows easy lifting through tight spaces

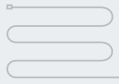
### Top Refrigerant Connections

Eliminates counter flow and line re-routing

## Nomenclature

P	L	24	H	145	P12	9	25	N
Product Line	Cabinet Color	Nominal MBTUH	Coil Type	Coil Height	Slab Number	Refrigerant Type & Metering Device (Field Configurable)	Cabinet Length	Refrigerant Detection System (Field Configurable)
P = Plenum	L = Galvanized		H = Horizontal Coil	145 = 14.5" 175 = 17.5" 210 = 21.0" 245 = 24.5"	P13 P14 P16 etc.	1 = Piston <sup>1</sup> 7 = R-410A Bleed HP-A/C TXV 9 = R-410A Non-bleed HP-A/C TXV A = R454B Non-bleed HP-A/C TXV B = R32 Non-bleed HP-A/C TXV	35 40	R = Included (Factory Installed) N = Not Included (Field Installed)

<sup>1</sup>Piston will always be sized to match the nominal BTU rating of the coil. See Spec Guide for additional nomenclature details.



# HORIZONTAL SIDE CONNECTION - HD SERIES

FLEX  COIL

Scan the QR code  
to learn more



---

Dedicated horizontal coils offering the perfection solution for crawl spaces

---

Counterflow capable to meet any airflow direction

---

Side refrigerant connections for easy access to coil

---

Built-in plenum flanges with rounded corners for fast and safe installation

---

Available in copper or aluminum

## Improved Air Quality

Microbes can double every 20 minutes on an untreated surface!



Standard plastic pan with visible mold



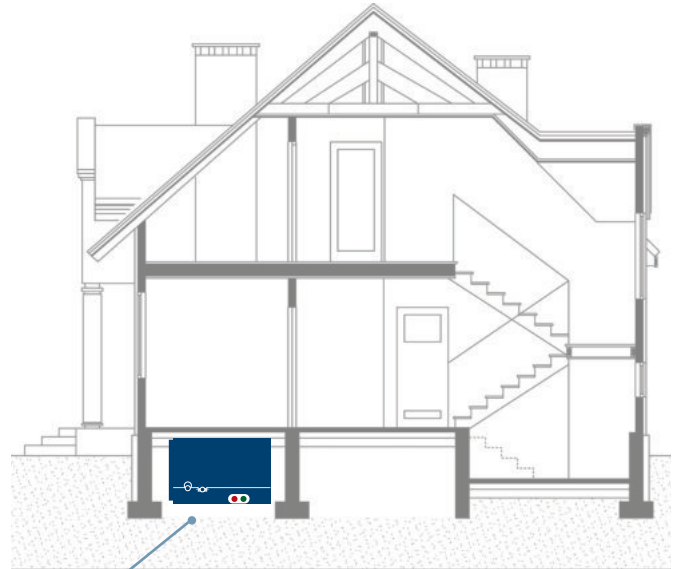
Plastic pan with Microban® antimicrobial additive

Mold is part of our environment and there are no practical ways to completely eliminate mold spores.

The best defense against mold in a home is to prevent it from taking hold through moisture control and the use of mold resistant building materials.

## Crawl Space Solutions

Dedicated horizontal with side refrigerant connections are perfect for crawl space application!



**Low Height**

Perfect for crawl space under houses

**Side Refrigerant Connections**

Easy to access coil

## Nomenclature

H	D02	1	24	E	145	B	21	47	AP	N
Cabinet Color	Slab Number	Refrigerant Type & Metering Device (Field Configurable)	Nominal MBTUH	Cabinet Width	Cabinet Height	Duct Flange	Cabinet Length	Product Code	Access Port	Refrigerant Detection System (Field Configurable)
H = Embossed A = Armstrong G = ICP J = Goodman/Amana N = Nordyne P = Carrier/Bryant/Payne R = Rheem/Ruud T = Trane/American Standard Y = York/Luxaire/Coleman	D = Copper Slab P = Aluminum Slab	1 = Piston <sup>1</sup> 7 = R-410A Bleed HP-A/C TXV 9 = R-410A Non-bleed HP-A/C TXV A = R454B Non-bleed HP-A/C TXV B = R32 Non-bleed HP-A/C TXV		E = 21.5" (Standard)	145 = 14.5" 175 = 17.5" 210 = 21.0" 245 = 24.5"	B = 0.75"	21 = 21.5" 26 = 26.5" 31 = 31.5"	47 = Refrigerant connections on side of cabinet	AP = TXV Access Port	R = Included (Factory Installed) N = Not Included (Field Installed)

<sup>1</sup>Piston will always be sized to match the nominal BTU rating of the coil. See Spec Guide for additional nomenclature details.



# HORIZONTAL SLAB - HH SERIES

FLEX  COIL

Scan the QR code  
to learn more



---

Great for replacement of legacy applications

---

Dedicated Horizontal slab coils

---

Bi-directional airflow for installation flexibility

---

Available with piston or TXV factory installed

# Improved Air Quality

Microbes can double every 20 minutes on an untreated surface!



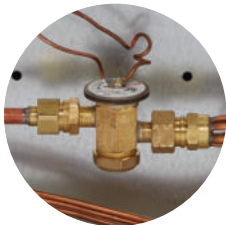
Standard plastic pan with visible mold



Plastic pan with Microban® antimicrobial additive

Mold is part of our environment and there are no practical ways to completely eliminate mold spores.

The best defense against mold in a home is to prevent it from taking hold through moisture control and the use of mold resistant building materials.

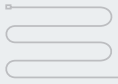


Factory installed TXV's with bolt on connections

## Nomenclature

H	H57	1	24	A	185	A	21	02	AP	N
Cabinet Color	Slab Number	Refrigerant Type & Metering Device (Field Configurable)	Nominal MBTUH	Cabinet Depth	Cabinet Width	Airflow	Cabinet Height	Product Code	Access Port	Refrigerant Detection System (Field Configurable)
H = Embossed		<b>1</b> = Piston <sup>1</sup> <b>7</b> = R-410A Bleed HP-A/C TXV <b>9</b> = R-410A Non-bleed HP-A/C TXV <b>A</b> = R454B Non-bleed HP-A/C TXV <b>B</b> = R32 Non-bleed HP-A/C TXV		A = 10"	<b>185</b> = 18 5/8" <b>225</b> = 22 5/8" <b>265</b> = 26 5/8" <b>305</b> = 30 5/8" <b>365</b> = 36 5/8" <b>425</b> = 42 5/8"	A = Bi-directional airflow	21 = 21 1/4"	02 = Cased "H"	AP = TXV Access Port	<b>R</b> = Included (Factory Installed) <b>N</b> = Not Included (Field Installed)

<sup>1</sup>Piston will always be sized to match the nominal BTU rating of the coil. See Spec Guide for additional nomenclature details.



# MANUFACTURED HOME - M SERIES

FLEX  COIL

Scan the QR code  
to learn more



---

Manufactured housing application

---

Filter friendly top plate

---

Sized out down-turned headers for easy line brazing

---

Coils charged with dry air for greater flexibility with both R-22 and R-210A applications

---

Low water retention drain pan design with built-in downflow drip shields

# Blow-off Protection & Improved Air Quality

ADP provides enhanced protection to prevent condensate blow-off and improve overall air quality. Our manufactured housing evaporator coils are designed to remove unhealthy standing water from the drain pan.



### Reduce Condensate Blow-off

Specially designed downflow drain pan for added protection

### Reduced Installation Time

Drip shield molded into pan, no installation required

### Sloped Drain Pan

Superior drainage versus standard manufactured housing coils

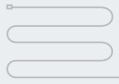
### Moisture Control

Reduced opportunities for growth of mold and bacteria due to standing water

## Nomenclature

M	24	E32	9	N
Series	Nominal MBTUH	Slab No.	Refrigerant Type & Metering Device (Field Configurable)	Refrigerant Detection System (Field Configurable)
M = Manufactured Housing		E30 E31	<p><b>1</b> = Piston<sup>1</sup></p> <p><b>7</b> = R-410A Bleed HP-A/C TXV</p> <p><b>9</b> = R-410A Non-bleed HP-A/C TXV</p> <p><b>A</b> = R454B Non-bleed HP-A/C TXV</p> <p><b>B</b> = R32 Non-bleed HP-A/C TXV</p>	<p><b>R</b> = Included (Factory Installed)</p> <p><b>N</b> = Not Included (Field Installed)</p>

<sup>1</sup>Piston will always be sized to match the nominal BTU rating of the coil. See Spec Guide for additional nomenclature details.



# SERVICE COILS

Scan the QR code  
to learn more



---

Perfect replacement for 8-12 SEER coils

---

Sized for legacy installations

---

Same features as rated coils

---

Embossed cabinets for universal furnace match

---

Supplied with pistons for both R-22 and R-410A application





# The Premier Replacement Coil for Any System

- Service coil for indoor coil replacement only; for new systems, please see our Premier Evaporator Coil product line
- Same features as rated coils
- Perfect replacement for 8–12 SEER coils
- Sized for legacy installations
- Supplied with pistons for both R-22 and R-410A applications
- Access port for easy TXV installation
- “No Hassle” 5-year warranty

## Nomenclature

S	24	R	145																								
Product Line	Nominal MBTUH	Configuration	Width/Height																								
S = Service Coil		R = Right Hand Upflow (CU) L = Left Hand Upflow (CU) H = Horizontal (AK) S = Horizontal Slab (CU)  <i>(Multi-position option not available)</i>	<table border="1"> <thead> <tr> <th>Cased</th> <th>Uncased</th> <th>Horizontal</th> <th>Slab</th> </tr> </thead> <tbody> <tr> <td>145 = 14.5"</td> <td>130 = 13.0"</td> <td>145 = 14.5"</td> <td>187 = 18.75"</td> </tr> <tr> <td>175 = 17.5"</td> <td>140 = 14.0"</td> <td>175 = 17.5"</td> <td>227 = 22.75"</td> </tr> <tr> <td>210 = 21.0"</td> <td>155 = 15.5"</td> <td>210 = 21.0"</td> <td></td> </tr> <tr> <td>245 = 24.5"</td> <td>170 = 17.5"</td> <td>245 = 24.5"</td> <td></td> </tr> <tr> <td></td> <td>200 = 20.0"</td> <td></td> <td></td> </tr> </tbody> </table>	Cased	Uncased	Horizontal	Slab	145 = 14.5"	130 = 13.0"	145 = 14.5"	187 = 18.75"	175 = 17.5"	140 = 14.0"	175 = 17.5"	227 = 22.75"	210 = 21.0"	155 = 15.5"	210 = 21.0"		245 = 24.5"	170 = 17.5"	245 = 24.5"			200 = 20.0"		
Cased	Uncased	Horizontal	Slab																								
145 = 14.5"	130 = 13.0"	145 = 14.5"	187 = 18.75"																								
175 = 17.5"	140 = 14.0"	175 = 17.5"	227 = 22.75"																								
210 = 21.0"	155 = 15.5"	210 = 21.0"																									
245 = 24.5"	170 = 17.5"	245 = 24.5"																									
	200 = 20.0"																										

See Spec Guide for additional nomenclature details.

## Upflow Specifications

Model Number	Cased Width				Uncased Width				
	14.5"	17.5"	21"	24.5"	13"	14"	15.5"	17"	20"
S 24 (R,L)	X				X	X			
S 30 (R,L)	X	X			X	X	X		
S 36 (R,L)	X	X	X			X	X	X	
S 42 (R,L)		X	X				X	X	
S 48 (R,L)		X	X					X	X
S 60 (R,L)			X	X					X

## Piston Kit Sizes

MBTUH	R-22	R-410A
24	59	53
30	67	59
36	73	67
42	80	73
48	84	76
60	93	93

## Horizontal Specifications

Model Number	Horizontal			
	14.5"	17.5"	21"	24.5"
S 24 H	X			
S 36 H	X	X		
S 48 H		X	X	
S 60 H			X	X

## Horizontal Slab Specifications

Model Number	Low Profile 18.75" Slab			Standard 22.75" Slab			
	23"	27"	35"	23"	27"	35"	47"
S 24 S	X			X			
S 36 S		X			X		
S 48 S			X			X	
S 60 S			X				X



# NOTES

---

---

---

---

---

---

---

---

---

---

---

---

---

---

---

---

---

---

---

---

---

---

---

---

---

---

---





2175 W Park Pl. Blvd, Stone Mountain, GA 30087

**adpnow.com**



Advanced Distributor  
Products



Advanced Distributor  
Products



@adpnow



advanceddistributorproducts