



The new degree of comfort®

# Rheem Prestige® RTGH is a series of High-Efficiency Condensing Tankless Gas Water Heaters designed for continuous hot water

## Efficiency

- Up to .93 UEF with stainless steel condensing heat exchanger

## Easy Installation and Service

- **NEW! 2" venting connections**
- **NEW! Vent up to 150 ft with 3" PVC and 60 ft with 2" PVC**
- Built-in condensate neutralizer
- 1/2" Gas line compatibility up to 24 ft.<sup>1</sup>
- **Exclusive! Maintenance Notice Setting** – Alerts homeowner, after 500 hours of use, to call for service (optional)
- Self-diagnostic system for easy installation and service
- High-altitude capability – up to 8,400 ft. elevation above sea level<sup>2</sup>
- Digital remote control **now pre-wired!** 10 ft. of thermostat wire included – shows temperature setting and service codes
- Requires 120V power supply

## Performance

- **Industry Leading! Low Flow Activation** – Minimum flow rate of .26 GPM and minimum activation flow rate of .40 GPM ensures hot water even in low demand situations
- **Recirculation Pump Kit-Ready** – Providing faster hot water at the tap and savings of up to 12,000 gallons water/year<sup>3</sup>
- **Exclusive! Hot Start Programming** – Minimizes cold water bursts by staying in ready-fire state for back-to-back hot water needs

## Technology

- **EcoNet® Enabled** – all Tankless products from 2010 to present can connect to EcoNet mobile app via Tankless EcoNet Accessory Kit (REWRA630TWH)
- For higher demand applications, easily link multiple tankless units to operate as one system:
  - 2 Units: EZ Link cable
  - Up to 6 units: MIC-6 Control Board
  - Up to 20 units: MIC-185 plus MICS-180 manifold control assembly

## Environmentally Friendly

- **Low Emissions** – Ultra low NOx burner meets SCAQMD rule 1146.2 requirements
- **Exclusive! Water Savings Setting** – Save up to 1,100 gallons water/year<sup>4</sup> by reducing flow at the tap until set temperature is achieved (optional)

## Safety

- **Exclusive! Overheat film wrap** – prevents dangerous temperatures and provides industry best side-to-side clearance of 1/2 inch

## Warranty

- 12-Year heat exchanger – residential, 5-year heat exchanger – commercial, 5-year parts and 1-year labor
- See Warranty Certificate for complete information



**RTGH-95DVLN-2** Indoor Direct Vent     **RTGH-95XLN-2** Outdoor

11,000-199,900 BTU/h  
Natural and LP Gas

Swap **N** for **P** in model number for LP model

Maximum Water Temperature is 140° F  
(for applications requiring up to 185° F, see Rheem Commercial Tankless options)

<sup>1</sup>Based on Rheem testing of 1/2" gas line with gas supply of 7" w.c. up to 24'; Installation conditions vary; Consult the Rheem® Use and Care Manual, the Rheem® Gas Piping Facts brochure (TK-GPF-12), the National Fuel Gas Code (NFPA 54, ANSI Z223.1), and any other local gas codes when installing a Rheem Tankless Water Heater.  
<sup>2</sup>Contact customer service for exact altitude rating for each model.  
<sup>3</sup>Pump kit designed for single unit applications only.  
<sup>4</sup>Savings based on DOE test procedures.



LEED Points = 2



### Rheem Tankless Water Heater with EcoNet® WiFi Included

**Shares all efficiency, performance, technology, warranty and safety values as standard models, with added WiFi capability in the box.**

#### Smart Home Features

- Water leak detection alert and system shut off (indoor models only) – may qualify for insurance discounts
- Mobile alerts for notifications/maintenance reminders
- Mobile gas and water usage reports
- Integration with smart home systems

#### Product Includes

- Factory-installed translator
- Leak detection cable (for indoor models)
- Wi-Fi Module, connection cable and power cord

*App available free in App Store and Google Play for Android*

ANDROID APP ON

Available on the



**RTGH-95DVELN-2**  
Indoor Direct Vent with EcoNet®  
11,000-199,900 BTU/h Only  
(Outdoor model also available)





The new degree of comfort.



Residential Gas  
Prestige RTGH Tankless Water Heaters

## Rheem Prestige® Specifications

DESCRIPTION				FEATURES					ROUGHING IN DIMENSIONS (SHOWN IN INCHES)						ENERGY INFO.	
MODEL NUMBER	GAS INPUT BTU/H	TYPE	NUMBER OF BATHROOMS*	TEMP. RANGE	MIN. FLOW/ACTIVATION GPM	GPM @ 67° RISE MAX.	GPM @ 45° RISE MAX.	GPM @ 35° RISE MAX.	CONNECTION		HEIGHT	WIDTH	DEPTH	VENT DIAM.	SHIP WEIGHT (LBS.)	UNIFORM ENERGY FACTOR (UEF)
									WATER	GAS						
RTGH-95DVLN-2	11,000-199,900	Indoor Direct Vent	4	85° to 140° F	0.26/0.40	5.7	8.5	9.5	3/4	3/4	27-1/2	18-1/2	9-3/4	2" or 3" PVC 2-Pipe	82	0.93
RTGH-95DVELN-2 (EcoNet® Included)	11,000-199,900	Indoor Direct Vent	4	85° to 140° F	0.26/0.40	5.7	8.5	9.5	3/4	3/4	27-1/2	18-1/2	9-3/4	2" or 3" PVC 2-Pipe	82	0.93
RTGH-95XLN-2	11,000-199,900	Outdoor	4	85° to 140° F	0.26/0.40	5.6	8.5	9.5	3/4	3/4	27-1/2	18-1/2	9-3/4	N/A	82	0.93
RTGH-95XELN-2 (EcoNet® Included)	11,000-199,900	Outdoor	4	85° to 140° F	0.26/0.40	5.6	8.5	9.5	3/4	3/4	27-1/2	18-1/2	9-3/4	N/A	82	0.93
RTGH-90DVLN-2	11,000-180,000	Indoor Direct Vent	3 - 4	85° to 140° F	0.26/0.40	5.2	7.7	9.0	3/4	3/4	27-1/2	18-1/2	9-3/4	2" or 3" PVC 2-Pipe	82	0.93
RTGH-90XLN-2	11,000-180,000	Outdoor	3 - 4	85° to 140° F	0.26/0.40	5.2	7.7	9.0	3/4	3/4	27-1/2	18-1/2	9-3/4	N/A	82	0.93
RTGH-84DVLN-2	11,000-157,000	Indoor Direct Vent	3	85° to 140° F	0.26/0.40	4.6	6.7	8.4	3/4	3/4	27-1/2	18-1/2	9-3/4	2" or 3" PVC 2-Pipe	82	0.93
RTGH-84XLN-2	11,000-157,000	Outdoor	3	85° to 140° F	0.26/0.40	4.5	6.7	8.4	3/4	3/4	27-1/2	18-1/2	9-3/4	N/A	82	0.93
RTGH-68DVLN-2	11,000-120,000	Indoor Direct Vent	2.5	85° to 140° F	0.26/0.40	3.4	5.1	6.8	3/4	3/4	27-1/2	18-1/2	9-3/4	2" or 3" PVC 2-Pipe	82	0.91
RTGH-68XLN-2	11,000-120,000	Outdoor	2.5	85° to 140° F	0.26/0.40	3.4	5.1	6.8	3/4	3/4	27-1/2	18-1/2	9-3/4	N/A	82	0.91

\*Based on simultaneous showers using 2.5 GPM flow rate pre-mixed with cold water line. Flow rates vary depending on temperature of incoming cold water and water heater set temperature. Refer to flow rate curves for accurate sizing. Uniform Energy Factor and Energy Factor based on Department of Energy (D.O.E.) requirements. All models are available in Natural Gas and Propane (LP). For Propane replace the N with P when ordering. SCAQMD 1146.2 compliant.

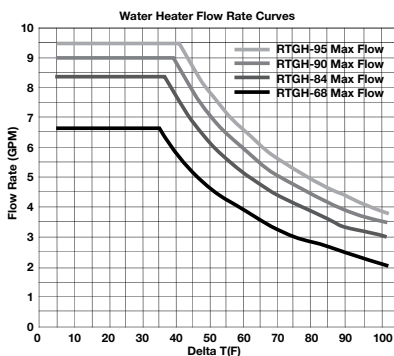
Factory set maximum temperature is 120° F. See Use and Care Manual for setting. Consult factory for information on sizing the application. Add a "C" to the model number when ordering Canadian models. Outdoor models are only for seasonal use in Canada. Please contact Rheem Canada Ltd. for details. Vent Termination Kits are required for Direct Vent models. Contact your distributor for details.

Proper gas pressure must be ensured to supply tankless gas water heaters – up to 199,900 BTU/h for RTGH-95 models, up to 180,000 BTU/h for RTGH-90 models, up to 157,000 BTU/h for RTGH-84 models, up to 120,000 BTU/h for RTGH-68 models. (Consult your gas supplier)

### Temperature Rise (° F)

Model Number	35°	45°	50°	60°	67°	70°	80°	90°	100°
RTGH-95 Water Flow (GPM)	9.5	8.5	7.7	6.4	5.7	5.5	4.8	4.3	3.8
RTGH-90 Water Flow (GPM)	9.0	7.7	6.9	5.8	5.2	4.9	4.3	3.8	3.5
RTGH-84 Water Flow (GPM)	8.4	6.7	6.0	5.0	4.6	4.3	3.8	3.3	3.0
RTGH-68 Water Flow (GPM)	6.6	5.1	4.6	3.8	3.4	3.3	2.9	2.6	2.3

Above estimates are for sizing purposes only.



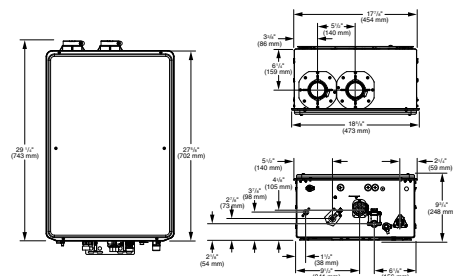
### Maximum Vent Length (intake/outlet):

NUMBER OF 90° ELBOWS	MAXIMUM LENGTH OF 2" STRAIGHT PIPE*	MAXIMUM LENGTH OF 3" STRAIGHT PIPE
0	60 ft.	150.0 ft.
1	57 ft.	148.5 ft.
2	54 ft.	147.0 ft.
3	51 ft.	145.5 ft.
4	48 ft.	144.0 ft.
5	45 ft.	142.5 ft.
6	42 ft.	141.0 ft.

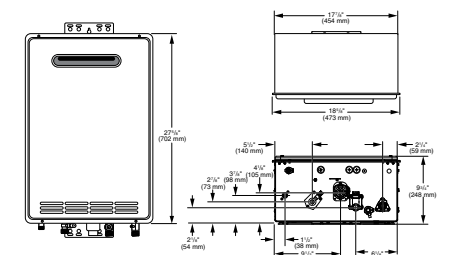
(ULC-S636 pipe must be used for Canada.)

\*Dip switch setting change required to achieve 60 ft. maximum vent length on 2" straight pipe. Max length for 2" straight pipe is 22 ft. with factory default settings.

### Indoor Direct Vent



### Outdoor



## Parts and Accessories

Venting & terminations – 2" or 3" PVC, recess boxes, pipe covers, extra remote controls, EZ-Link™ cable, manifolds and cables, service valve kits, service parts, flush kits, recirculation pump kits and AllClear™ water treatment system. For more information on Tankless parts and accessories, see the Parts and Accessories Catalog or call 866-720-2076.

In keeping with its policy of continuous progress and product improvement, Rheem reserves the right to make changes without notice.

Rheem Water Heating • 1115 Northmeadow Parkway, Suite 100  
Roswell, Georgia 30076 • www.rheem.com

Rheem Canada Ltd./Ltée • 125 Edgeware Road, Unit 1  
Brampton, Ontario L6Y 0P5 • www.rheem.ca



INTEGRATED HOME COMFORT