



# Si-1801

## Centrifugal tank pump



### SUITABLE FOR

- Condensing boilers & furnaces
- Refrigerated display cabinets
- Air conditioning units

### PERFORMANCE

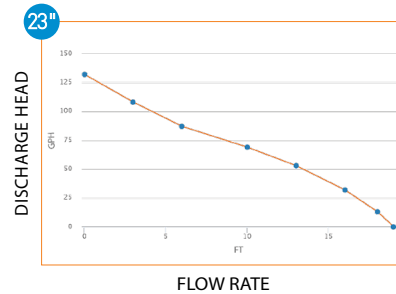
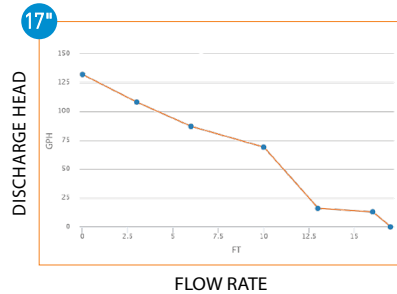
- 132 gph max. flow
- 17' shut off head (SI1801LHUS11)
- 23' shut off head (SI1801SCUS11/23)
- 23' shut off head (SI1801SCUS11T/23T)

### ✓ Key features

- Built-in safety switch
- Oil and acid resistant float
- Installation versatility



### Actual flow rates (GPH)



### Recommended accessories



Clear PVC hose, 3/8" i.d.  
 Clear PVC hose, i.d.  
 Sold in 20ft and 82ft rolls.  
 (20 ft roll included with models ending in /T)  
 • ACC 00120: 20 ft  
 • ACC 00125: 82 ft



Replacement check valve,  
 for 3/8" i.d. tubing  
 • ACC 00801



pH Safe 1 Neutralization  
 cartridge, for inner Si-1801  
 • PH0100SIUN23

### What's in the box



- Centrifugal tank pump with integrated barb end check valve
- 6' power cable, safety contact wires, 1' bare ends
- 20' of tubing (only included with models ending in "/T")
- Adaptor
- 2 screws, & 2 wall anchors



SCAN THIS QR CODE  
 FOR ADDITIONAL  
 SI-1801 TECHNICAL  
 INFORMATION

# Features and Benefits

## Easy Install

Pump can be floor mounted, attached to a wall or hung from a ceiling.



## High Resistance

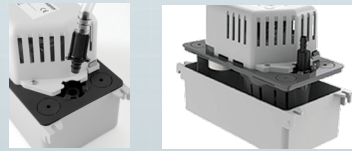
- Oil and acid resistant float
- Mechanical structure resistant to shocks

## Versatile

- Easily removable tank for simple maintenance and algae control
- Reversible pump allows mounting on either side of the installation, and the choice of which side the water exits the pump

## Easy Connection

- New quarter turn, easily removable check valve, designed to facilitate  $\frac{3}{8}$ " i.d. hose plug in
- 4 inlet holes  $1\frac{3}{16}$ " o.d.



## Si-1801 tech specs

	17' LOW HEAD	23' W/ TUBING	23' W/O TUBING
MAX. FLOW RATE:	132 gph	132 gph	132 gph
SHUT-OFF HEAD:	17.5 ft @ 60Hz	23ft @ 60Hz	23ft @ 60Hz
SOUND LEVEL:	45 dBA according to EN ISO 3744 (Measured at LNE lab, pump operating w/ water, out of application)	45 dBA according to EN ISO 3744 (Measured at LNE lab, pump operating w/ water, out of application)	45 dBA according to EN ISO 3744 (Measured at LNE lab, pump operating w/ water, out of application)
POWER SUPPLY:	120V ~ 60 Hz - 85 W - 1.45A (SI1801LHUS11)	120V ~ 60 Hz - 85 W - 1.45A (SI1801US11/T) 230V ~ 50/60 Hz - 80 W - 0.72A (SI1801US23/T)	120V ~ 60 Hz - 85 W - 1.45A (SI1801SCUS11) 230V ~ 50/60 Hz - 80 W - 0.72A (SI1801US23)
DETECTION LEVELS:	On: $2\frac{3}{32}$ " • Off: $1\frac{21}{32}$ " • Safety: $2\frac{1}{2}$ "	On: $2\frac{3}{32}$ " • Off: $1\frac{21}{32}$ " • Safety: $2\frac{1}{2}$ "	On: $2\frac{3}{32}$ " • Off: $1\frac{21}{32}$ " • Safety: $2\frac{1}{2}$ "
SAFETY SWITCH:	NC 4A resistive - 42 V peak	NC 4A resistive - 42 V peak	NC 4A resistive - 42 V peak
MAX CONDENSATE TEMP:	150° F / Short Peak 176° F - 1m	150° F / Short Peak 176° F - 1m	150° F / Short Peak 176° F - 1m
MAX CONDENSATE ACIDITY:	pH > 2.5 (Gas Condensing Boilers)	pH > 2.5 (Gas Condensing Boilers)	pH > 2.5 (Gas Condensing Boilers)
THERMAL PROTECTION:	230° F auto-reset	248° F auto-reset	248° F auto-reset
OPERATING CONDITIONS:	120V - 30%: 3s ON - 7s OFF	120V - 30%: 3s ON - 7s OFF 230V - 30%: 3s ON - 7s OFF	120V - 30%: 3s ON - 7s OFF 230V - 30%: 3s ON - 7s OFF
PUMP DIMENSIONS:	11"L x $5\frac{3}{16}$ " W x $6\frac{5}{7}$ " H	11"L x $5\frac{3}{16}$ " W x $6\frac{5}{7}$ " H	11"L x $5\frac{3}{16}$ " W x $6\frac{5}{7}$ " H
SAFETY STANDARDS:	UL / CSA certified by Intertek	UL / CSA certified by Intertek	UL / CSA certified by Intertek
RoHS & WEEE DIRECTIVES:	Compliant	Compliant	Compliant
PACKAGING:	4.4 lbs ( $11\frac{5}{8}$ " L x $5\frac{5}{16}$ " W x $7\frac{1}{4}$ " H)	6.2 lbs ( $11\frac{5}{8}$ " L x $5\frac{5}{16}$ " W x $9\frac{7}{8}$ " H)	5.5 lbs ( $11\frac{5}{8}$ " L x $5\frac{5}{16}$ " W x $7\frac{1}{4}$ " H)
MASTERPACK:	6 pieces	4 pieces	6 pieces