



# Prefabricated Sheet Metal Ducts & Fittings

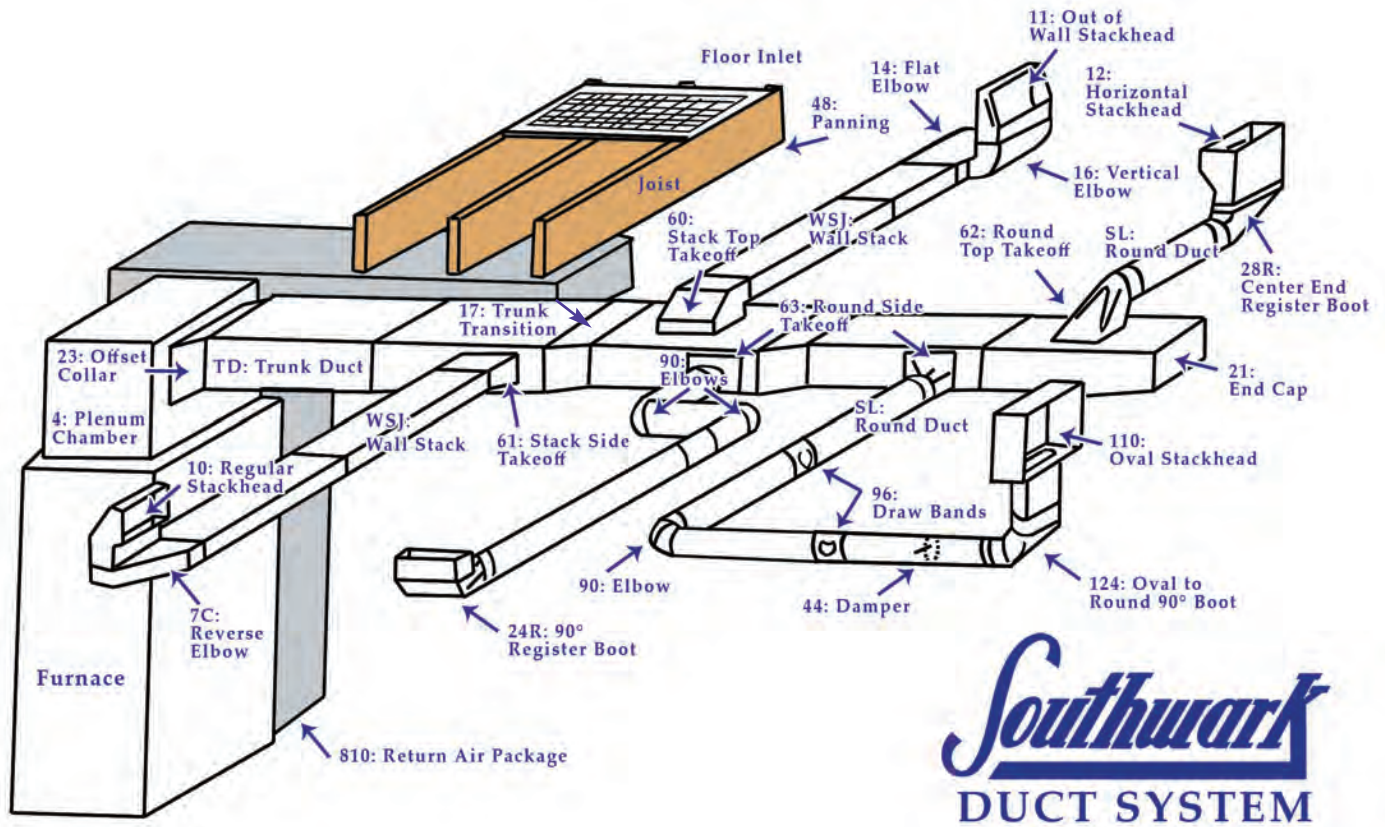
*Philadelphia Division*

2800 Red Lion Road • Philadelphia, PA 19114  
(800) 523-1052 • (800) 722-2076

# SOUTHWARK METAL MFG. CO. PHILADELPHIA DIVISION

## Product Category Index

PAGE	DESCRIPTION
4	Snaplock Pipe
5	Elbows, Angles, & Register Boots
6-7	Trunk Duct & Fittings
8-9	Trunk Duct Fittings & Installation Accessories
10-11	Oval Pipe & Fittings
12-13	Wall Stack & Fittings
14-15	Sheet Metal & Fiberglass Takeoffs
16	Sheet Metal & Fiberglass Collars
17	Air-Tite Takeoffs
18-19	Accessories
20-21	Ceiling Outlets & Register Boxes
22	Venting Products
23	Black Pipe, Elbows, & Accessories



**Southwark**  
DUCT SYSTEM

## PRODUCT NUMBER INDEX

Item No.	Product Name	Page	Item No.	Product Name	Page	Item No.	Product Name	Page
3	Fiberglass Extension	9	77WF	Diffuser Funnel w/Flange	21	812B	Cold Air Boot	8
4	Plenum Chamber	8	78	Wye Branch	19	813	Return Air Package	8
5	12" Duct Hanger	9	83PC	Branch Connector	19	813B	Cold Air Boot	8
6	S-Cleat	9	84ST	Ductboard Collar	16	814	Return Air Package	8
8	Drive Cleat	9	84STWD	Ductboard Collar w/Damper	16	814B	Cold Air Boot	8
13	Flat Trunk 45° Angle	6	85	Insul.Ceiling Box Top Outlet	20	815	Return Air Package	8
14	Flat Trunk 90° Elbow	6	85S	Insul.Ceiling Box Side Outlet	20	815B	Cold Air Boot	8
14TT	Trunk Tee	7	86SC	Sleeve Connector	19	816	Return Air Package	8
15	Vertical Trunk 45° Angle	6	87	Lever Takeoff Metal	14	816B	Cold Air Boot	8
16	Vertical Trunk 90° Elbow	6	90	90° Adjustable Elbow	5	817	Return Air Package	8
17	Trunk Transition	6	90	Floor Register Box- 6" Deep	21	817B	Cold Air Boot	8
17CR	Adjustable Register Boot	5	91	Floor Reg. Box- 11" Deep	21	AT62	Air-Tite Top Takeoff	17
17TT	Trunk Tee	7	92	Funnel Register Box	21	AT62WD	Air-Tite Top w/Damper	17
18	Connector- Plenum to Trunk	7	93	Elbow Draft Vent	18	AT63	Air-Tite Side Takeoff	17
19RC	Register Collar	21	94	Horizontal Draft Vent	18	AT63A	Air-Tite Adj. Takeoff	17
20	Trunk Straight Collar	6	95	Vertical Draft Vent	18	AT63WD	Air-Tite Side w/Damper	17
21	Trunk End Cap	7	96	Drawband - Gear Clamp	19	ATD	Air-Tite w/Damper	17
23	Trunk Offset Collar	6	97	Flat Collar	16	ATDBM	Air-Tite Bellmouth w/Damper	17
23AT	Trunk Transition Collar	7	97FG	Spin Collar Fiberglass	16	ATDRP	Air-Tite Rd Pipe w/Damper	17
24	90° Stack Boot	12	97FGWD	Spin Collar w/Damper Fiberglass	16	ATHE	Air-Tite High Efficiency	17
24R	90° Register Boot	5	97LS	Long Style Flat Collar	16	ATHEWD	Air-Tite High Efficiency w/Damper	17
24RWE	90° Basement Boot	5	97LSWD	Flat Collar w/Damper	16	ATS	Air-Tite w/Scoop	17
26	Angle Stack Boot	12	98	Spin Collar w/Scoop Fiberglass	16	ATSD	Air-Tite w/Scoop & Damper	17
26R	45° Register Boot	5	98WD	Spin Collar w/Scoop & Damper Fiberglass	16	ATT	Air-Tite Plain	17
27	Straight Stack Boot	12	99	Chimney Cap	18	ATBMB	Air-Tite Bellmouth	17
27R	Straight Register Boot	5	99LD	Chimney Cap- Lo Draft	18	ATTRP	Air-Tite Round Pipe	17
28	End Stack Boot	12	100	Oval Pipe - 100"	10	ATTRP45	Air-Tite 45° Saddle	17
28R	End Register Boot	5	106	Rd to Oval Reverse Boot	10	BP12	Black Pipe- 12"	23
28RL	End Register Boot-Left	5	110	Oval Stackhead	10	BP24	Black Pipe- 24"	23
28RR	End Register Boot-Right	5	111	Register Outlet	10	BP36	Black Pipe- 36"	23
29RO	Offset Register Boot	5	113	Flat Oval 45° Angle	10	BP54	Black Tee Joint	23
31	Return Air Frame	9	114	Flat Oval 90° Elbow	10	BP55	Black Tee Cap	23
31PF	Plaster Frame	21	115	Vertical Oval 45° Angle	11	BP58	Black Reducer- 3PC	23
34PLF	Adj. Takeoff Fiberglass	15	116	Vertical Oval 90° Elbow	11	BP90	Black 90° Elbow	23
35	Trunk Reducer	9	117	Flue Thimble	18	BP96	Black Drawband	23
35A	Trunk Reducer	9	120SC	Snap Collar - Sheet Metal	16	BP127	Black Oval to Rd Adapter	23
36	Fresh Air Intake	19	122SC	Snap Collar - Fiberglass	16	BPC	Black Pipe Collar	23
37	Rigid S-Cleat	9	124	Rd to Oval 90° Boot	11	BPCHAD	Black Chimney Adapter	23
39	Galvanized Vent Hood	19	124R	Oval 90° Register Boot	10	BPCON	Black Connector	23
39AL	Alum Wall Cap w/Damper	22	127	Rd to Oval Straight Boot	11	BPTC	Black Trim Collar	23
39GP	Gray Plastic Wall Cap	22	127R	Oval Straight Reg. Boot	10	CAF	Cold Air Frame	9
39WP	White Plastic Wall Cap	22	128	Oval to Oval Reverse Boot	11	CID	Cast Iron Damper	23
40	Damper Section	16	128R	Oval End Register Boot	10	EV141	Eave Vent	22
42	Trunk Volume Damper	7	132	'A' Adapter	13	HT15	Rd to Rd 1/2 Tab Takeoff Metal	14
44	Round Damper	18	133	'B' Adapter	13	MF	Aluminum Flexible Duct	22
44S	Rd Damper- Fixed Hardware	19	137	Drain Pan	21	MR	Mounting Rails	20
45	45° Adjustable Angle	5	140	Adjustable Roof Flashing	19	PC	Plenum Corner	9
47	Connector- Furnace to Plenum	7	141	Tall Cone Flashing	19	RV51	Alum Roof Cap-8" opening	22
48	Panning Material	9	142	Storm Collar	19	SAL	Aluminum Transition Duct	22
49P	Adjustable Plenum Panel	8	150	Oval Stackhead w/Collar	10	S5	Pivot Takeoff Metal	15
49T	Adjustable Plenum Top	8	156	Spin Collar	16	S75	Drawband - Snap	19
50	Wye - 15" Long	18	156D	Spin Collar w/Damper	16	SAE	Aluminum Elbow	22
51	Wye - 24" Long	18	156S	Spin Collar w/Scoop	16	SAP	Aluminum Pipe	22
51F	Ceiling Box	20	156SD	Spin Collar w/Scoop & Damper	16	SB30	Return Air Support Box	9
52	Flue Wye	18	160	Oval Pipe - 60"	10	SB38	Return Air Support Box	9
53	Tee- 24" Long	18	162	Oval Top Takeoff	11	SH	White Flexible Vinyl Hose	22
54	Tee- 15" Long	18	163	Oval Side Takeoff	11	SL24	Round Pipe-24"	4
54SW	Swivel Tee	18	170	Return Air Pan	21	SL60	Round Pipe-60"	4
55	Tee Cap	19	177	Ceiling Outlet	20	SL120	Round Pipe-120"	4
58	Reducer- 3PC	18	177S	Ceiling Side Outlet	20	SPC	Pipe Clamp	22
58WF	Diffuser Outlet w/Flange	21	199	H-Vent	18	SVH	Aluminum Vent Hood	22
59F	Ceiling Box	20	201VH	Aluminum Wall Vent	22	SVHBP	Brown Plastic Vent Hood	22
62	Top Takeoff Metal	14	201VHW	White Plastic Vent	22	SVHWP	White Plastic Vent Hood	22
62FG	Top Takeoff Fiberglass	14	207	Quick Tee 90°	19	TD	Trunk Duct	6
63	Side Takeoff Metal	14	208	Quick Y 45°	19	WSJ	Wallstack	12
63A	Adjustable Takeoff Metal	15	220EC	Eave Vent	22	WS7C	Center Reverse Stack Elbow	13
63AFG	Adj. Takeoff Fiberglass	15	239	Alum Roof Cap w/Damper	22	WS9	Double Stackhead	12
63FG	Side Takeoff Fiberglass	15	240	Alum Roof Cap w/Damper	22	WS10	Stackhead	12
64	Double Top Takeoff Metal	15	241	Alum Roof Cap w/Damper	22	WS10X	Stackhead w/Ears	12
65	Rd to Rd Adj. Takeoff Metal	14	277	Ceiling Outlet No Flange	20	WS11	Projection Stackhead	12
66WF	Ceiling Diffuser Outlet	21	355	Oval Straight Register Box	11	WS12	Horizontal Stackhead	12
67	Basement Diffuser Box	20	360	Oval Angle Register Box	11	WS13	Flat Stack 45° Angle	13
70	Register Takeoff	20	390WP	White Louver Hood w/Tail	22	WS14	Flat Stack 90° Elbow	13
71	Register Tee	20	391WP	White Louver Hood	22	WS15	Vertical Stack 45° Angle	13
72	Diffuser Tee	21	582	Reducer- 2PC	19	WS16	Vertical Stack 90° Elbow	13
72WF	Diffuser Tee w/Flange	21	810	Return Air Package	8	WS17	Stack Transition	13
73	Square Diffuser Box	21	810B	Cold Air Boot	8	WS20	Stack Straight Collar	13
74	Register Cap	20	811	Return Air Package	8	WS21	Stack End Cap	13
75	Register Box- 7" Deep	20	811B	Cold Air Boot	8	WS45	Stack Damper	13
77	Rd to Square Diffuser Box	20	812	Return Air Package	8	WS60	Stack Top Takeoff	13
77S	Rd to Square Diffuser Box Side	20				WS61	Stack Side Takeoff	13



**No. SL24**  
2 FT PIPE - 30, 26 & 24 GAUGE

No tools required to assemble Snaplock Pipe.

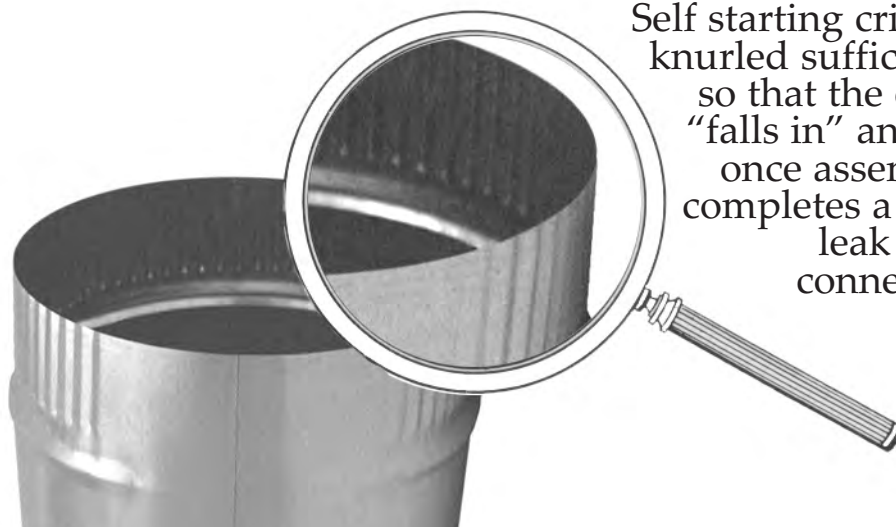
Simply start at one end and easily snap pipe together. One person can quickly assemble up to 10 ft. lengths.



**No. SL60**  
5 FT PIPE - 30 & 26 GAUGE



**No. SL120**  
10 FT PIPE - 30 GAUGE



Self starting crimp is knurled sufficiently so that the crimp "falls in" and yet, once assembled completes a rigid, leak proof connection.



90° ADJUSTABLE ELBOW



45° ADJUSTABLE ANGLE



**No. 24R**  
90° REGISTER BOOT



**No. 27R**  
STRAIGHT  
REGISTER BOOT



**No. 28R**  
END REGISTER BOOT  
**No. 28RL** LEFT HAND  
**No. 28RR** RIGHT HAND



**No. 26R**  
45° ANGLE  
REGISTER BOOT



**No. 17CR**  
OFFSET  
ADJUSTABLE  
REGISTER BOOT



**No. 29RO**  
2" OFFSET  
REGISTER  
BOOT



**No. 24RWE**  
90° BASEMENT BOOT

- 12", 30", 48", 60", and 96" Lengths
- Furnished in Button Snaplock with S-Cleat & Drive Connections
- Cross Broken for Extra Stiffening Strength

No. TD  
TRUNK DUCT



No. 13  
FLAT 45°  
ANGLE



No. 14  
FLAT 90°  
ELBOW



No. 15  
VERTICAL  
45° ANGLE



No. 16  
VERTICAL  
90° ELBOW



No. 20  
STRAIGHT  
COLLAR



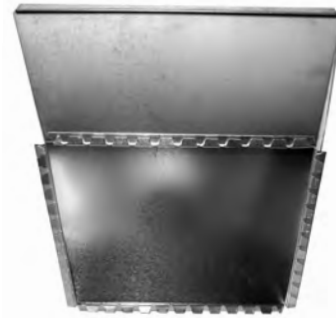
No. 17  
TRANSITION



No. 23  
OFFSET COLLAR



**No. 42**  
VOLUME DAMPER



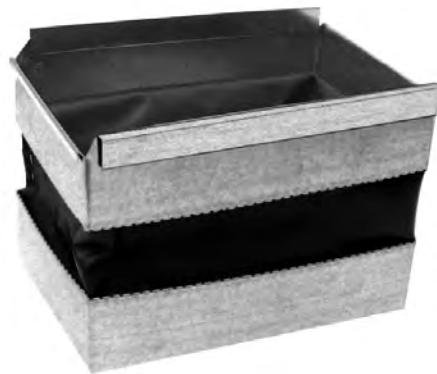
**No. 23AT**  
TRANSITION COLLAR



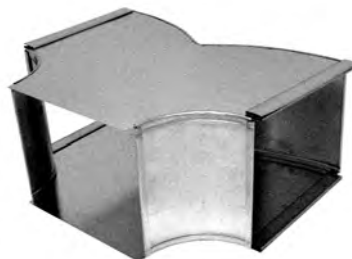
**No. 18**  
CONNECTOR  
PLENUM to  
TRUNK

23AT TRANSITION	
PLENUM OPENING (width x height)	DUCT SIZE
12x10	14x8
12x11	16x8
12x12	18x8
12x14	20x8
12x15	22x8
12x16	24x8
14x15	26x8
14x16	28x8
16x15	30x8
16x16	32x8

**No. 47**  
CONNECTOR  
FURNACE to  
PLENUM



**No. 21**  
END CAP



**No. 14TT**  
TRUNK TEE



**No. 17TT**  
TRUNK TEE

**No. 49T**  
ADJ.  
PLENUM  
TOP



**No. 49P**  
ADJ.  
PLENUM  
SIDE

**ADJUSTABLE PLENUMS**

AVAILABLE TO ORDER  
(Actual plenum height, 2" less than listed size)

TO INSTALL...

- (1) Cut raw edges of side panels to desired width and height sizes.
- (2) Trim top to desired width and depth dimensions.
- (3) Assemble 3 sides, slide top into side panel pockets, then position fourth side.
- (4) Secure assembly with sheet metal screws.



**No. 4**  
PLENUM CHAMBER  
CUSTOM SIZES  
SHIPPED KNOCKED  
DOWN OR MADE-UP

**RETURN AIR PACKAGE**

Complete package consisting of:  
1 - #20 Starting Collar  
2 - 30" Duct Sections  
1 - R.A. Plenum with 1" Filter Rack  
6 - 10" Drive Straps  
*Shipped K.D. in One Carton*

RA PKG.	DUCT SIZE	BOOT ONLY
810	20x10 - 20x16	810B
811	25x10 - 25x16	811B
812	20x10 - 20x14	812B
813	25x10 - 25x14	813B
814	20x8 - 20x16	814B
815	24x8 - 24x16	815B
816	20x8 - 20x14	816B
817	24x8 - 24x14	817B





**No. 8**  
DRIVE CLEAT



**No. 37**  
RIGID S-CLEAT



**No. 6**  
S-CLEAT



**No. 3**  
FIBERGLASS  
EXTENSION



**No. 5**  
12" DUCT HANGER



**No. CAF**  
COLD AIR FRAME



**No. PC**  
PLENUM  
CORNER



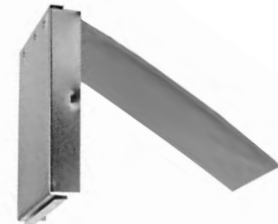
**No. 48**  
PANNING  
MATERIAL



**No. 31**  
RETURN AIR  
FRAME



**No. 35**  
TRUNK REDUCER

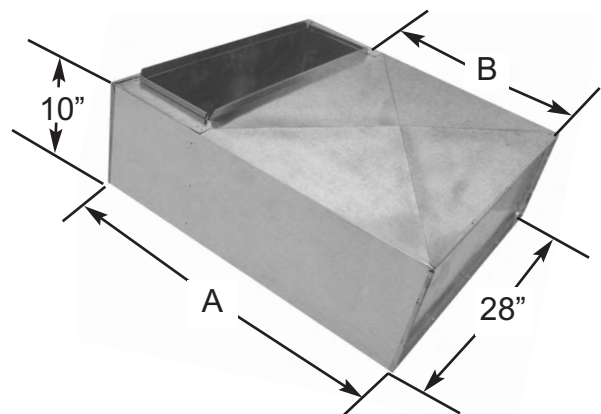


**No. 35A**  
TRUNK REDUCER

**RETURN AIR/SUPPORT BOX**

	<b>SB30</b>	<b>SB38</b>
A DIMENSION	30"	38"
B DIMENSION	20"	26"
RETURN AIR DUCT SIZE	8 X 24	10 X 25

**No. SBF** - Return Air Support Box w/Filter Rack  
(Accepts 1", 4", & 5" Filter)



**RETURN AIR/SUPPORT BOX**

**No. 100** OVAL PIPE 100" - 30 Ga.

**No. 112** OVAL PIPE 112" - 30 Ga.

**No. 160** OVAL PIPE 60" - 30 Ga.



**No. 110**  
OVAL STACKHEAD



**No. 113**  
FLAT 45° ANGLE



**No. 114**  
FLAT 90° ELBOW



**No. 111**  
REGISTER OUTLET



**No. 150**  
STACKHEAD w/COLLAR



**No. 106**  
OVAL to ROUND  
REVERSE BOOT



**No. 124R**  
90° REGISTER BOOT

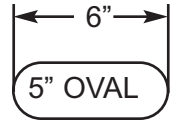
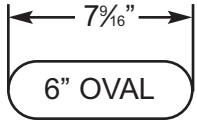
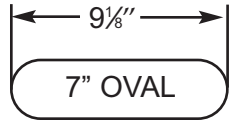
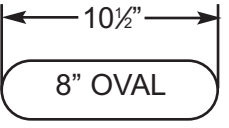


**No. 127R**  
STRAIGHT  
REGISTER BOOT



**No. 128R**  
END REGISTER BOOT

**WALL STACK VS. OVAL PHYSICAL COMPARISON**

 <p>6" 5" OVAL</p> <p>3¼" X 8"</p>	 <p>7<sup>1</sup>/<sub>6</sub>" 6" OVAL</p> <p>3¼" X 10"</p>	 <p>9<sup>1</sup>/<sub>8</sub>" 7" OVAL</p> <p>3¼" X 12"</p>	 <p>10<sup>1</sup>/<sub>2</sub>" 8" OVAL</p> <p>3¼" X 14"</p>
---	---	--	--



**No. 115**  
VERTICAL 45° ANGLE



**No. 116**  
VERTICAL 90° ELBOW



**No. 162**  
OVAL TOP TAKEOFF



**No. 127**  
OVAL to ROUND  
STRAIGHT BOOT



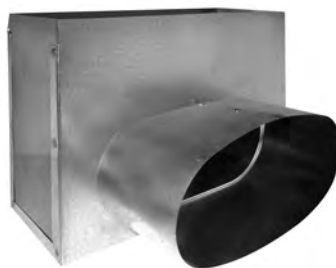
**No. 124**  
OVAL to ROUND  
90° BOOT



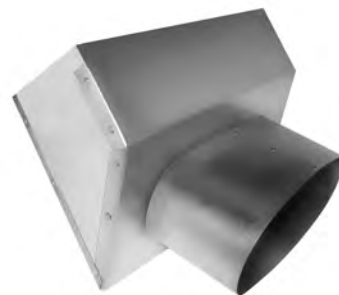
**No. 163**  
OVAL SIDE TAKEOFF



**No. 128**  
OVAL to OVAL  
REVERSE BOOT



**No. 355**  
STRAIGHT OVAL  
REGISTER BOX



**No. 360**  
ANGLE OVAL  
REGISTER BOX

- 12", 24", 30", 60" & 100" Lengths
- Furnished in Button Snaplock
- Two Pieces Per Section
- No Tools and No Indentations, Just Snap It and It's Closed



**WALL STACK**



**No. 24**  
90°  
STACK BOOT



**No. 28**  
END  
STACK BOOT



**No. 26**  
ANGLE  
STACK BOOT



**No. 27**  
STRAIGHT  
STACK BOOT

## STACKHEADS



**No. WS10X**  
STACKHEAD w/EARS



**No. WS9**  
DOUBLE  
STACKHEAD



**No. WS10**  
STACKHEAD



**No. WS11**  
PROJECTION  
STACKHEAD



**No. WS12**  
HORIZONTAL  
STACKHEAD



**No. WS15**  
VERTICAL 45° ANGLE



**No. WS16**  
VERTICAL 90°  
ELBOW



**No. WS20**  
STRAIGHT COLLAR



**No. WS13**  
FLAT 45° ANGLE



**No. WS14**  
FLAT 90° ELBOW



**No. WS21**  
END CAP



**No. WS45**  
DAMPER



**No. WS7C**  
CENTER  
REVERSE ELBOW  
WS7L - Left Hand  
WS7R - Right Hand



**No. WS17**  
TRANSITION



**No. WS60**  
TOP TAKEOFF



**No. WS61**  
SIDE TAKEOFF



**No. 132**  
"A" ADAPTER ADJUSTABLE  
2½ x 10 - 12 or 14



**No. 133**  
"B" ADAPTER ADJUSTABLE  
4 x 10 - 3¼ x 10, 12, or 14



**No. 62**  
SHEET METAL  
TOP TAKEOFF

Pipe Size	Base Opening
4"	4 x 6
5"	5 x 6
6"	6 x 6
7"	7 x 7
8"	8 x 8
9"	10 x 10
10"	11½ x 10
12"	12 x 12
14"	14 x 14



**No. 62FG**  
FIBERGLASS TOP  
TAKEOFF

Pipe Size	Base Opening
4"	4 x 6
5"	5 x 6
6"	6 x 6
7"	7 x 7
8"	8 x 8
9"	10 x 10
10"	11½ x 10
12"	12 x 12
14"	14 x 14



**No. 63**  
SHEET METAL  
SIDE RD TAKEOFF

Pipe Size	Base Opening
4"	6 x 6
5"	6 x 6
6"	6 x 6
7"	6 x 8
8"	6 x 10
9"	7 x 12
10"	7 x 14
12"	8 x 18
14"	8 x 20



**No. HT15**  
SHEET METAL RD to RD  
HALF TAB TAKEOFF

Pipe Size	Base Opening
6"	7"



**No. 65**  
SHEET METAL RD to RD  
ADJUSTABLE TAKEOFF

Pipe Size	Base Opening
5"	6"
6"	7"
7"	8"
8"	9"



**No. 87**  
SHEET METAL  
LEVER TAKEOFF

Pipe Size	Base Opening
5"	6"
6"	7"
7"	8"



**No. 63FG**  
FIBERGLASS  
SIDE TAKEOFF

Pipe Size	Base Opening
4"	6 x 6
5"	6 x 6
6"	6 x 6
7"	6 x 8
8"	6 x 10
9"	7 x 12
10"	7 x 14
12"	8 x 18
14"	8 x 20



**No. 63A**  
SHEET METAL  
ADJUSTABLE RD TAKEOFF

Pipe Size	Base Opening
4"	4 x 6
5"	5 x 6
6"	6 x 7
7"	7 x 8
8"	7 x 10
9"	9 x 11
10"	10 x 12
12"	12 x 16
14"	14 x 19



**No. 63AFG**  
FIBERGLASS  
ADJUSTABLE TAKEOFF

Pipe Size	Base Opening
4"	4 x 6
5"	5 x 6
6"	6 x 7
7"	7 x 8
8"	7 x 10
9"	9 x 11
10"	10 x 12
12"	12 x 16
14"	14 x 19



**No. S5**  
SHEET METAL  
PIVOT TAKEOFF

Pipe Size	Base Opening
5"	6"
6"	7"
7"	8"



**No. 64**  
SHEET METAL  
DOUBLE TOP TAKEOFF

Pipe Size	Base Opening
5"	6 x 10
6"	7 x 10
7"	7 x 14
8"	8 x 14



**No. 34PLF**  
FIBERGLASS  
ADJUSTABLE TAKEOFF

Pipe Size	Base Opening
5"	5 x 6
6"	6 <sup>3</sup> / <sub>8</sub> x 6 <sup>3</sup> / <sub>8</sub>
7"	7 x 8
8"	6 <sup>3</sup> / <sub>8</sub> x 10

**SHEET METAL COLLARS**



**No. 120SC**  
SNAP COLLAR



**No. 97**  
FLAT COLLAR



**No. 97LS**  
LONG FLAT COLLAR  
**No. 97LSWD**  
COLLAR w/DAMPER



**No. 40**  
DAMPER SECTION



**No. 156**  
SPIN FITTING



**No. 156D**  
SPIN FITTING  
w/DAMPER



**No. 156S**  
SPIN FITTING  
w/SCOOP



**No. 156SD**  
SPIN FITTING  
w/SCOOP & DAMPER

**FIBERGLASS COLLARS**

**No. 84ST**  
COLLAR  
**No. 84STWD**  
COLLAR  
w/DAMPER



**No. 122SC**  
SNAP  
COLLAR



**No. 97FG**  
SPIN COLLAR



**No. 97FGWD**  
SPIN COLLAR  
w/DAMPER



**No. 98**  
SPIN COLLAR  
w/SCOOP



**No. 98WD**  
SPIN COLLAR  
w/SCOOP & DAMPER





**No. ATT**  
TAKEOFF  
PLAIN



**No. ATD**  
TAKEOFF  
w/DAMPER



**No. ATS**  
TAKEOFF  
w/SCOOP



**No. ATSD**  
TAKEOFF w/SCOOP  
& DAMPER



**No. ATTRP**  
RD PIPE TAKEOFF  
**No. ATDRP**  
w/DAMPER



**No. ATTRP45**  
45° SADDLE  
TAKEOFF



**No. ATBMB**  
BELLMOUTH TAKEOFF  
**No. ATDBM**  
w/DAMPER



**No. AT62**  
TOP TAKEOFF  
**No. AT62WD**  
w/DAMPER



**No. AT63**  
RECTANGULAR TAKEOFF  
**No. AT63WD**  
w/DAMPER



**No. ATHE**  
HIGH EFFICIENCY TAKEOFF  
**No. ATHEWD**  
w/DAMPER



**No. AT63A**  
ADJUSTABLE  
RD TAKEOFF

Size	Base Opening
4"	6 x 6
5"	6 x 6
6"	6 x 6
7"	6 x 8
8"	6 x 10
9"	7 x 12
10"	7 x 14
12"	8 x 18
14"	8 x 20

Size	Base Opening
5"	6 x 10
6"	6 x 10
7"	6 x 10
8"	8 x 12
9"	9 x 12
10"	10 x 14
12"	12 x 18
14"	14 x 18

- Tees and Wyes
- Reducers
- Dampers
- Vents
- Drawbands
- Flashing
- Connectors



**TEE JOINT**  
**No. 53 24" LONG**  
**No. 54 15" LONG**



**SMOKE WYE**  
**No. 50 15" LONG**  
**No. 51 24" LONG**



**No. 52**  
**FLUE WYE**



**No. 54SW**  
**SWIVEL TEE**



**No. 58**  
**3 Pc. REDUCER**  
 Available Crimped



**No. 99**  
**CHIMNEY CAP**



**No. 99LD**  
**LO-DRAFT**  
**CHIMNEY CAP**



**No. 199**  
**"H" VENT**



**No. 117**  
**FLUE THIMBLE**



**No. 93**  
**ELBOW**  
**DRAFT VENT**



**No. 94**  
**HORIZONTAL**  
**DRAFT VENT**



**No. 95**  
**VERTICAL**  
**DRAFT VENT**



**No. 44**  
**ROUND DAMPER**



**No. 55**  
TEE CAP  
Available Crimped  
Available w/Handle



**No. 207QT**  
QUICK TEE 90°



**No. 208QY**  
QUICK WYE 45°



**No. 582**  
2 Pc. REDUCER



**No. 78**  
Y-BRANCH



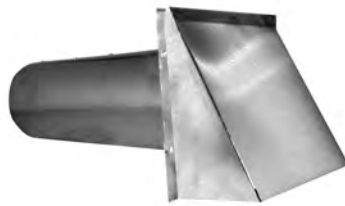
**No. 83PC**  
BRANCH  
CONNECTOR



**No. 86SC**  
SLEEVE  
CONNECTOR



**No. 36**  
FRESH AIR INTAKE



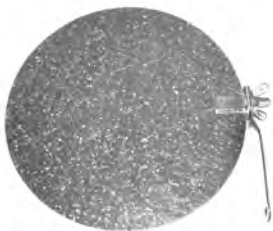
**No. 39**  
GALVANIZED  
VENT HOOD



**No. 96**  
DRAWBAND  
GEAR CLAMP



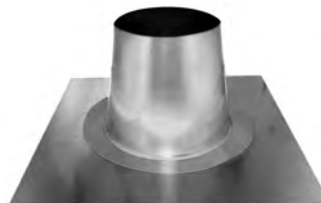
**No. S75**  
SNAPPY  
DRAWBAND



**No. 44S**  
ROUND DAMPER  
FIXED HARDWARE



**No. 140**  
ADJ. ROOF  
FLASHING



**No. 141**  
TALL CONE  
FLASHING



**No. 142**  
STORM COLLAR

# Ceiling Outlets & Register Boxes



**No. 177**  
CEILING OUTLET



**No. 177S**  
SIDE OUTLET



**No. 277**  
CEILING OUTLET  
NO FLANGE



**No. 77**  
ROUND to SQUARE  
DIFFUSER BOX



**No. 77S**  
ROUND to SQUARE  
DIFFUSER BOX  
SIDE OUTLET



**No. 85**  
INSULATED  
CEILING BOX  
TOP OUTLET



**No. 85S**  
INSULATED  
CEILING BOX  
SIDE OUTLET



**No. 75**  
7" DEEP  
REGISTER BOX



**No. 51F**  
STRAIGHT CEILING BOX  
w/FLANGE



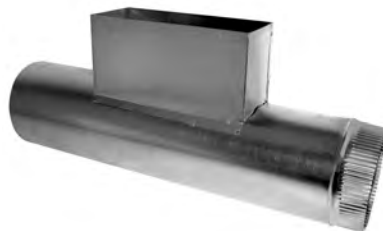
**No. 59F**  
90° CEILING BOX  
w/FLANGE



**No. MR**  
MOUNTING RAILS  
Available 24" or 36" long



**No. 70**  
REGISTER TAKEOFF



**No. 71**  
REGISTER TEE



**No. 74**  
REGISTER CAP



**No. 77WF**  
DIFFUSER FUNNEL  
w/FLANGE



**No. 58WF**  
DIFFUSER OUTLET  
w/FLANGE



**No. 73**  
SQUARE  
DIFFUSER BOX



**No. 67**  
BASEMENT  
DIFFUSER BOX



**No. 72**  
DIFFUSER TEE



**No. 72WF**  
DIFFUSER TEE  
w/FLANGE



**No. 91**  
FLOOR REGISTER  
BOX 11" DEEP



**No. 66WF**  
CEILING DIFFUSER  
OUTLET



**No. 19RC**  
REGISTER COLLAR



**No. 92**  
FUNNEL  
REGISTER BOX  
w/FLANGE



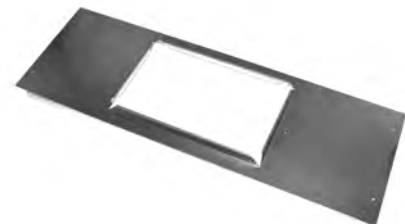
**No. 90**  
FLOOR REGISTER  
BOX 6" DEEP



**No. 137**  
DRAIN PAN



**No. 170**  
RETURN AIR PAN



**No. 31PF**  
PLASTER FRAME



**No. SVH**  
ALUMINUM  
VENT HOOD  
**No. SVHBP**  
BROWN PLASTIC  
**No. SVHWP**  
WHITE PLASTIC



**No. 390WP**  
WHITE LOUVER  
HOOD w/TAIL  
**No. 391WP**  
FACE ONLY



**No. SAP**  
ALUMINUM PIPE



**No. SAE**  
ALUMINUM  
ELBOW



**No. SPC**  
PIPE CLAMP



**No. SH**  
FLEXIBLE  
WHITE VINYL HOSE



**No. MF**  
FLEXIBLE  
ALUMINUM DUCT



**No. SAL**  
ALUMINUM  
TRANSITION DUCT



**No. 201VH**  
ALUMINUM  
WALL CAP  
**No. 201VHWP**  
WHITE PLASTIC



**No. 39GP**  
GRAY PLASTIC  
WALL CAP  
w/DAMPER  
**No. 39WP**  
WHITE PLASTIC



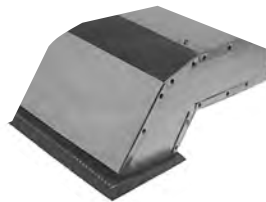
**No. 39AL**  
ALUMINUM  
WALL CAP  
w/DAMPER



**No. EV141**  
EAVE VENT



**No. RV51**  
ALUMINUM ROOF  
CAP w/SCREEN  
UP TO 8" ROUND



**No. 220EC**  
EAVE VENT  
w/GRILLE



ALUMINUM ROOF  
CAP w/DAMPER  
& SCREEN

- No. 239** - Fits 4" DIA.
- No. 240** - Up to 7" RD
- No. 241** - Up to 10" RD



- Available in 5", 6", 7", & 8" Diameters
- 24 Gauge Material
- Heat and Rust Resistant
- Standard Packaging



**No. BP**  
SNAPLOCK PIPE  
Available 12", 24", & 36" Lengths



**No. BP90**  
90° ADJUSTABLE ELBOW



**No. BPCHAD**  
CHIMNEY ADAPTER



**No. BP127**  
OVAL to RD ADAPTER



**No. BP54**  
TEE JOINT



**No. BP55**  
TEE CAP



**No. BP58**  
3 Pc. REDUCER



**No. BP96**  
DRAWBAND



**No. BPCON**  
CONNECTOR



**No. BPC**  
PIPE COLLAR



**No. BPTC**  
TRIM COLLAR



**No. CID**  
CAST IRON DAMPER

# Black Pipe, Elbows, & Accessories

**Providing Quality Products,  
Superior Service and On-Time Delivery  
since 1946.**



**Philadelphia Division**  
Philadelphia, PA  
(800) 523-1052  
(800) 722-2076 Fax

**Greenville Division**  
Piedmont, SC  
(800) 229-2803  
(864) 845-6190 Fax

**Indianapolis Division**  
Indianapolis, IN  
(800) 490-7707  
(317) 823-1006 Fax

**Mississippi Division**  
Southaven, MS  
(800) 541-6706  
(662) 393-8005 Fax

**Nebraska Division**  
Fremont, NE  
(800) 801-0336  
(402) 753-9008 Fax

**Idaho Division**  
Caldwell, ID  
(866) 289-9908  
(208) 402-2126 Fax

*www.southwarkmetal.com*